



Spare parts catalogue

AXLE 28.43M(CM10034)

REF: 357824

1.1 Axle housing

2.1 Bevel gear set

3.1 Differential

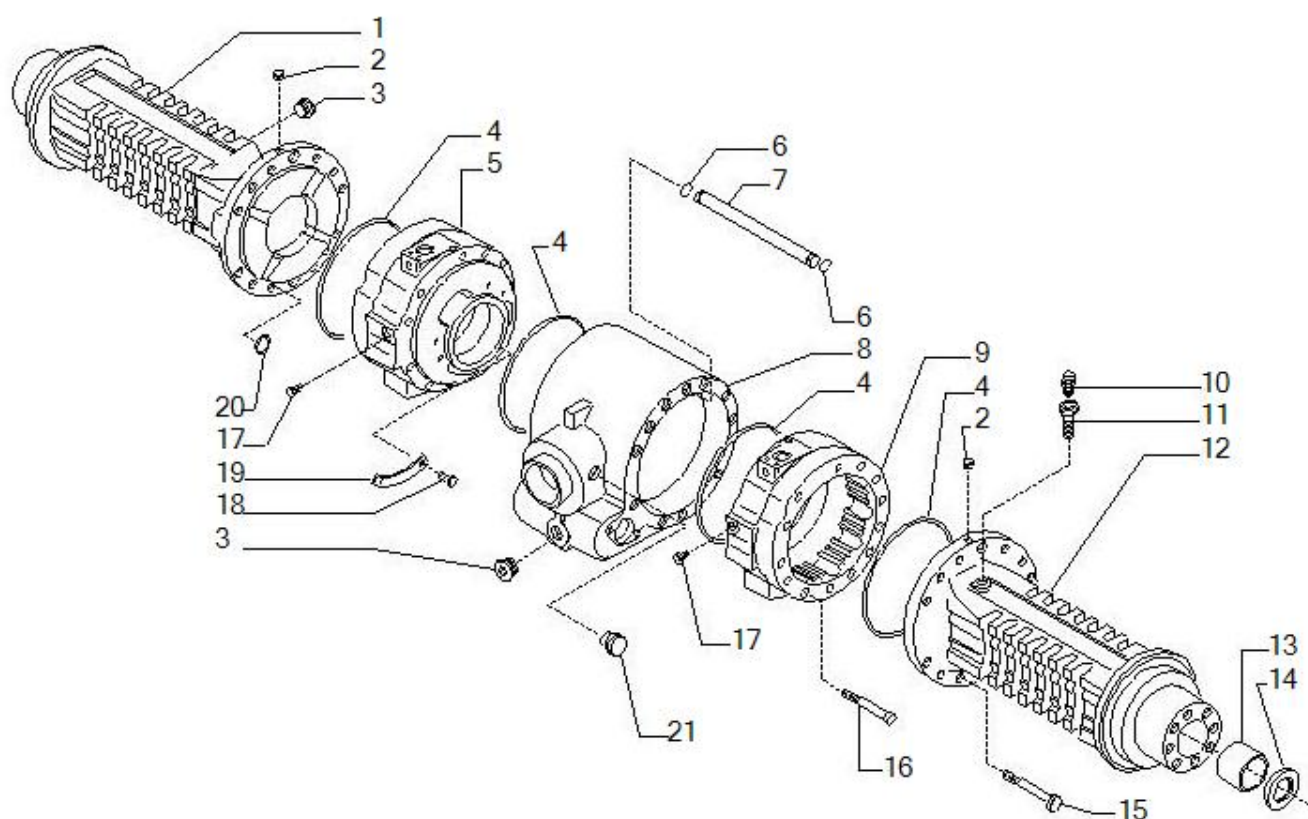
4.1 Differential locking

5.1 Differential locking

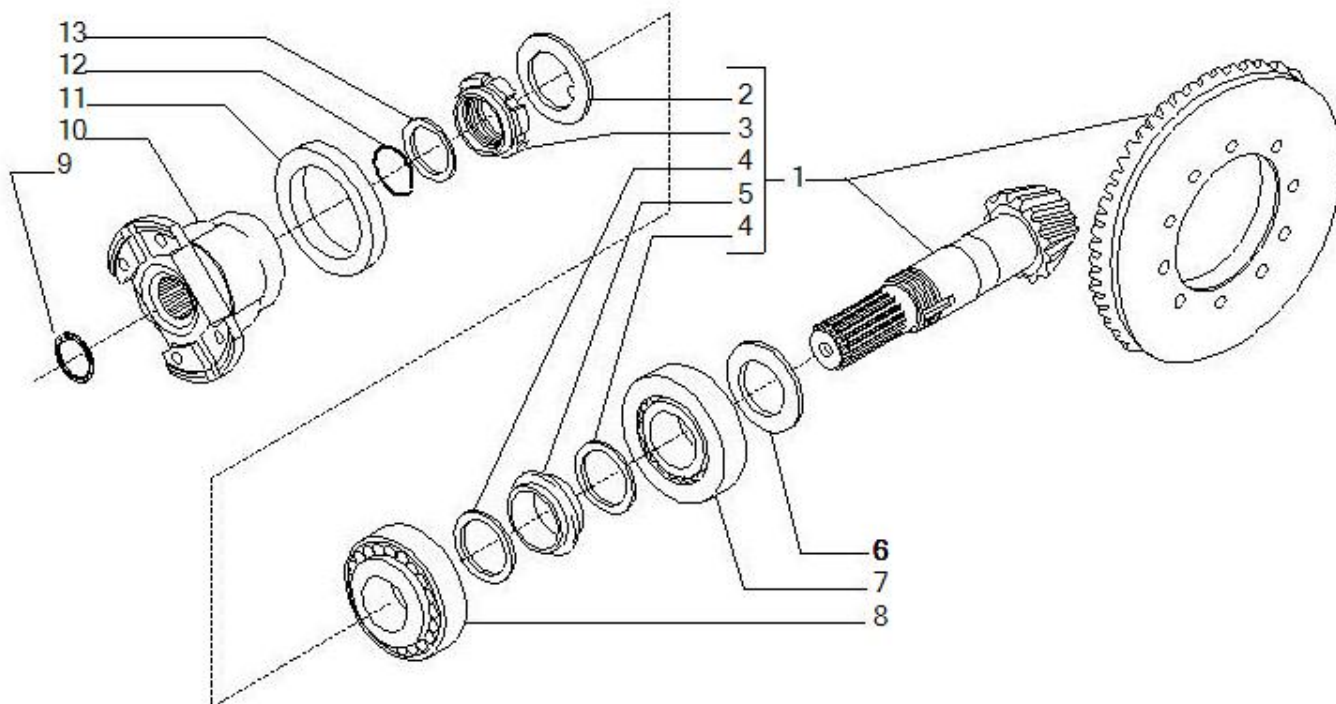
6.1 Brakes control

7.1 Wheel hub

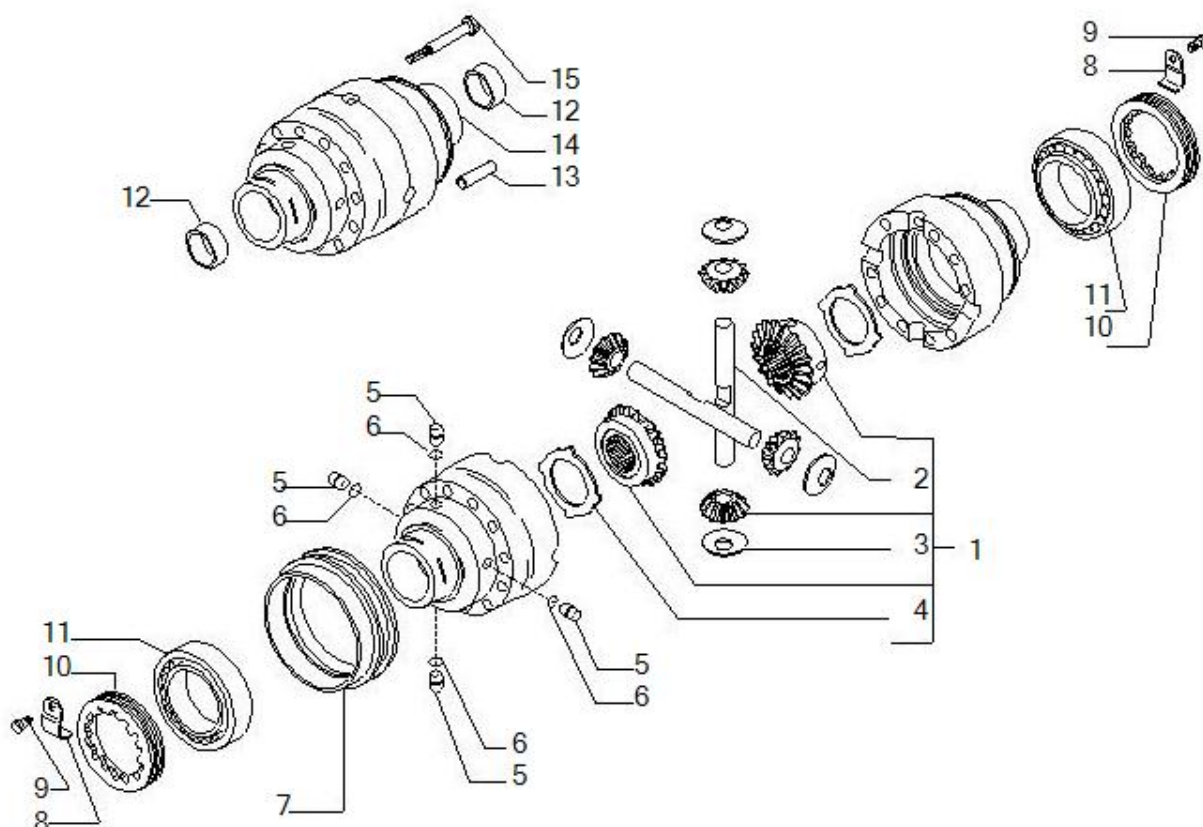
8.1 Final reduction



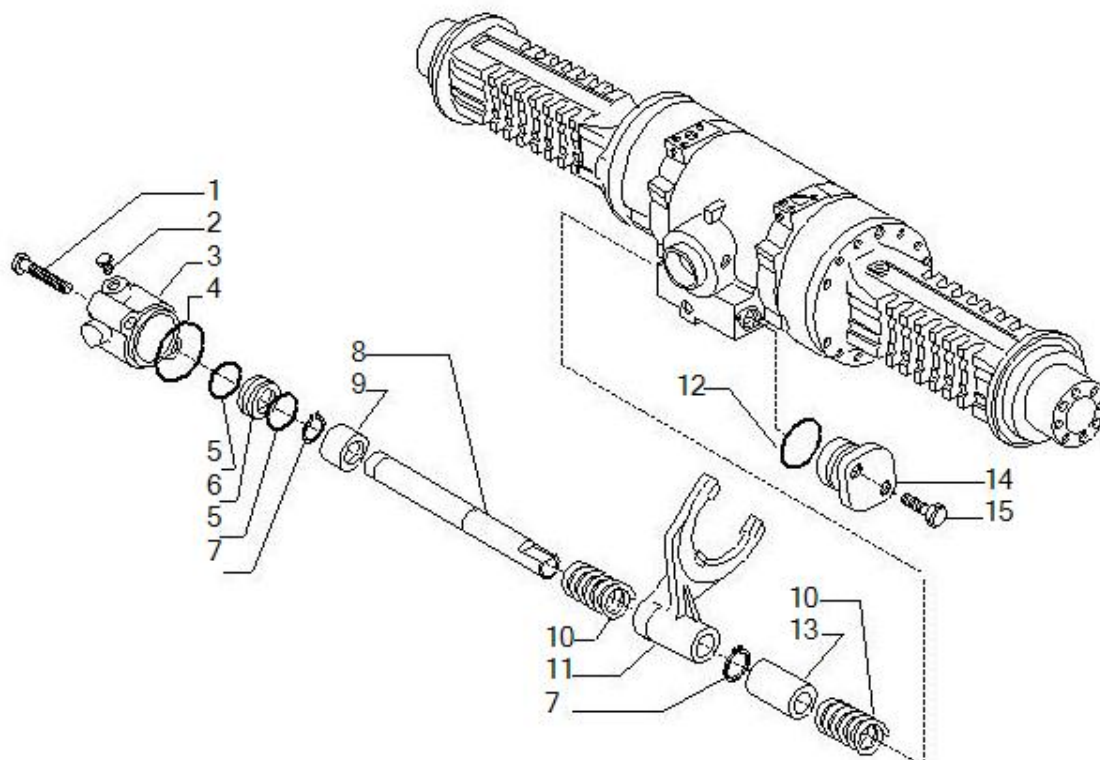
Pos	Ref	Qty	Description	Kit	Note
1	144350	1	BEAM TRUMPET LH (CA456598		
2	21558	2	Plug M10x1		
3	125280	2	MAGNETIC PLUG M30X2		
4	28562	4	O-RING 4900 2-270 228.19X		
5	144336	1	BRAKE CYLINDER LH (11773)		
6	28526	2	O.ring		
7	140132	1	TUBE		
8	139544	1	BEAM CENTRAL BODY (011761)		
9	144337	1	BRAKE CYLINDER RH (11773)		
10	104988	1	BREATHER M10X1		
11	121618	1	OIL VENT PIPE D		
12	144351	1	BEAM TRUMPET RH (456598)		
13	131954	2	BUSHING 38X42X38		
14	25311	2	Seal ring		
15	20993	22	Bolt M14x140		
16	21314	2	Bolt M12x130		
17	30803	2	Plug		
18	23838	4	Rivet 4.8x6		
19	140647	2	PLAQUE CHIUSURA FORO OLIO		
20	28500	8	O-RING 2075 018 18.77X1.7		
21	21579	1	Plug		



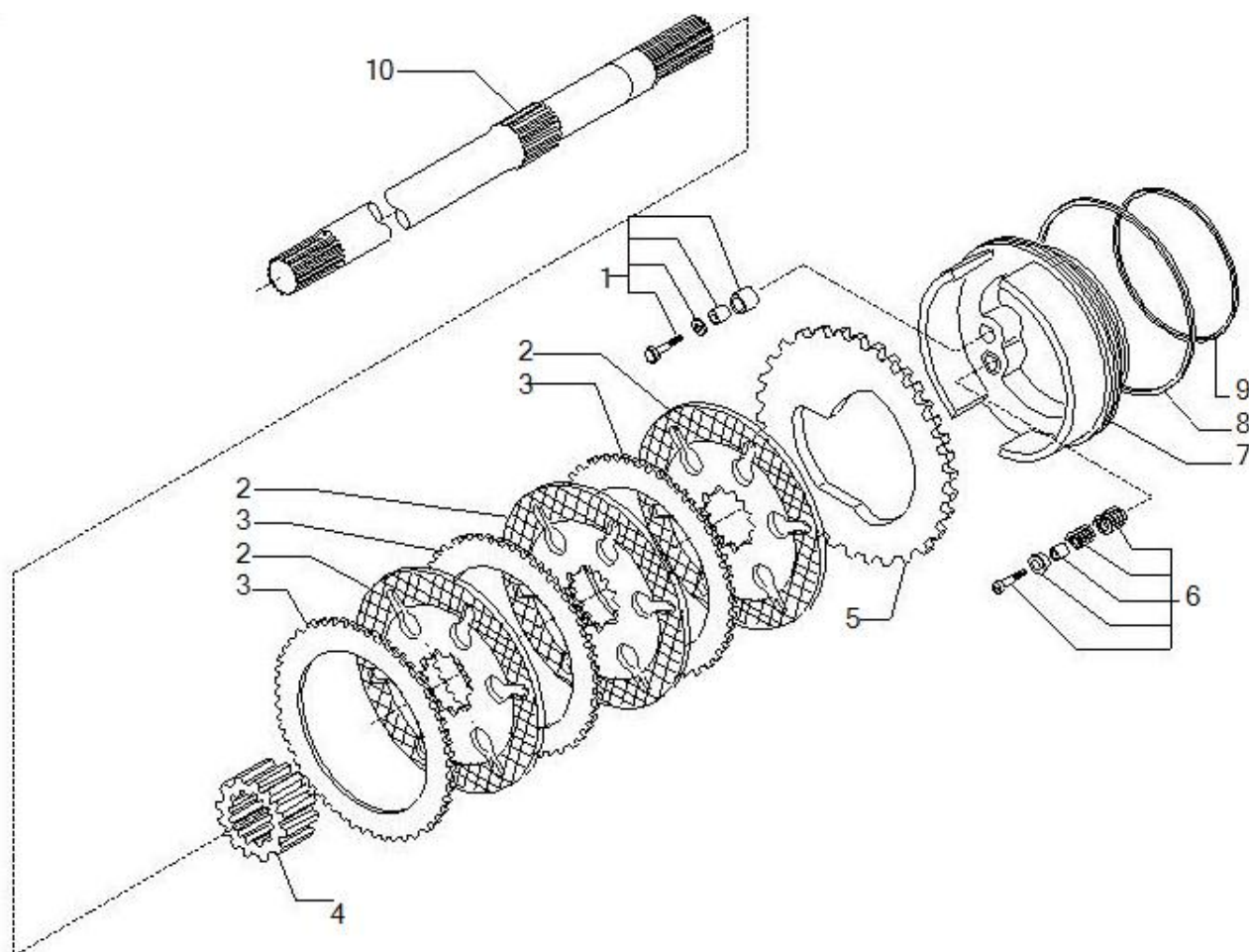
Pos	Ref	Qty	Description	Kit	Note
1	66941	1	BEVEL GEAR PINION SET 15/		
2	113717	1	WASHER 41X69X2 /RONDELLA FERMO GHIERA PI		
3	115054	1	RING NUT M40X1.5		
4	125829	2	THRUST SHOE 40.5X50X2 MAT		
5	138692	1	ELASTIC SPACER 45X42X15		
6	134186	1	SHIM 75X45.3X2.5		
6	134187	1	SHIM 75X45.3X2.6		
6	134188	1	SHIM 75X45.3X2.7		
6	134189	1	SHIM 75X45.3X2.8		
6	134190	1	SHIM 75X45.3X2.9		
6	134191	1	SHIM 75X45.3X3		
6	134192	1	SHIM 75X45.3X3.1		
6	134193	1	SHIM 75X45.3X3.2		
6	134194	1	SHIM 75X45.3X3.3		
6	134195	1	SHIM 75X45.3X3.4		
7	27351	1	Bearing		
8	27350	1	Bearing		
9	24789	1	Snap ring		
10	144332	1	PM FLANGE END YOKE 1410		
11	145050	1	CASSETTE RAD.SHAFT SEALX/		
12	28532	1	O-RING 3137 2-126 34.6X2.		
13	123402	1	WASHER C70 UNI 3545-68A NASTRO TEMPRATO		



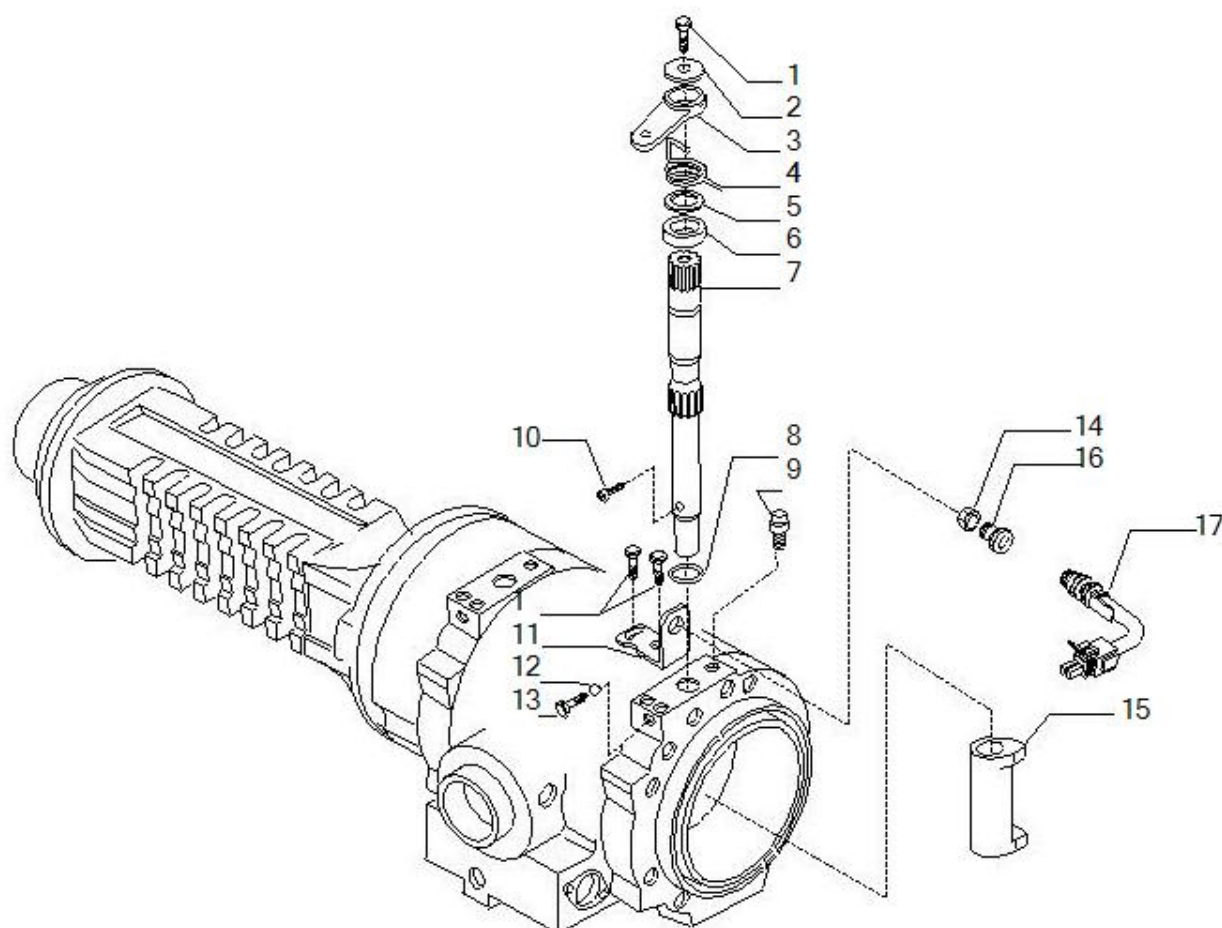
Pos	Ref	Qty	Description	Kit	Note
1	68568	1	Differential kit		
2	133035	2	DIFF.PLANET.GEAR PIN		
3	117171	4	SPHERICAL WASHER 25.22X60		
4	133036	2	COUNTERPLATE		
5	138651	4	RUNG INNESTO BLOCC.DIFF.		
6	28219	4	O.ring		
7	131592	1	SLIDING SLEEVE (17737)		
8	129118	2	RING NUT STOP		
9	128440	2	SELF-LOCKING SCREW M6X10 10.9		
10	125445	2	RING NUT M104X2 (18456)		
11	27367	2	TAPE ROLLER THRUST BEARING 32013X 100X65		
12	131747	2	BUSHING 36X40X35		
13	117569	2	PARALLEL PIN		
14	138654	1	COMPLETE DIFF.HOUSING		
15	125551	10	SELF-LOCKING SCREW M12X1.		



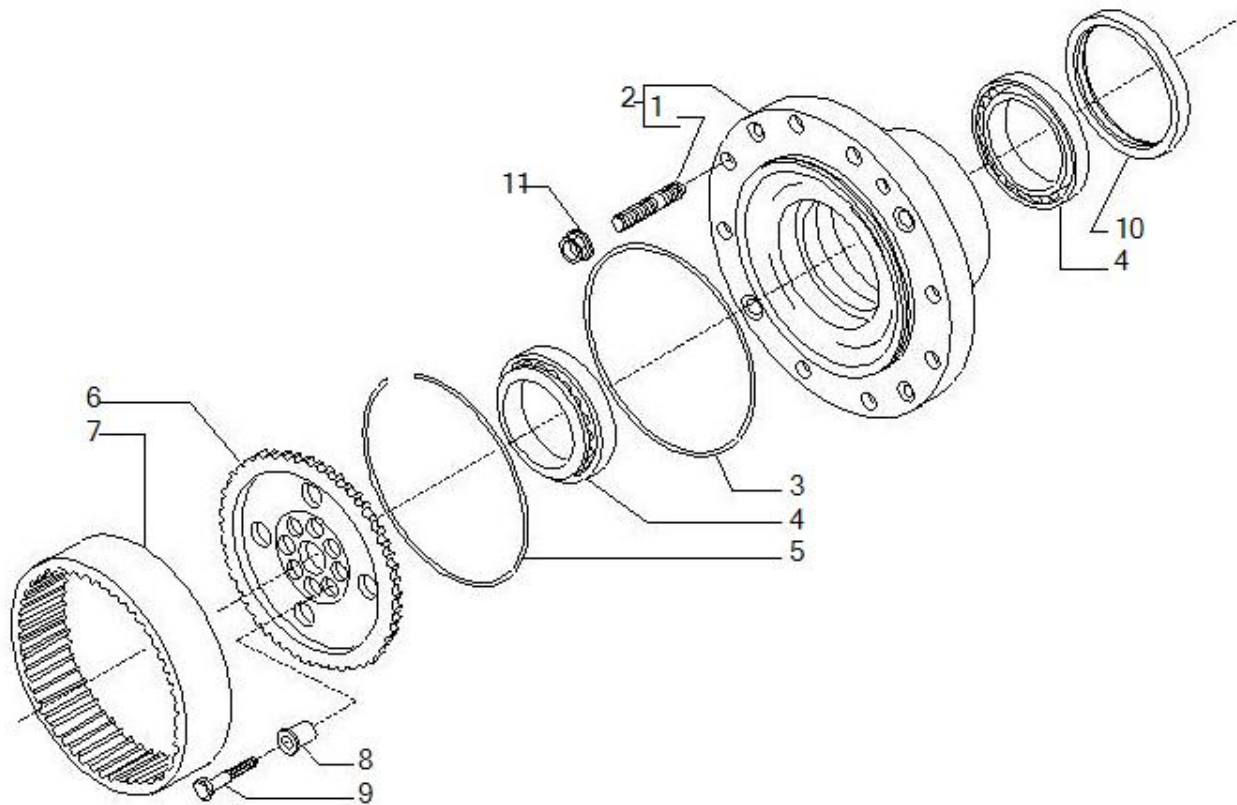
Pos	Ref	Qty	Description	Kit	Note
1	20807	2	Bolt M8x80		
2	30720	1	Plug 9/16		
3	139131	1	CILYNDER SUPPORT LH (11808)		
4	28527	1	O.ring		
5	28121	2	O.ring		
6	139139	1	DIFFERENTIAL LOCKING PISTON		
7	24776	2	Snap ring 20x1.75		
8	139141	1	CONTROL PIN Diff. locking		
9	139140	1	BUSH 35.93X20X32 41Cr4 UNI 7845		
10	125756	2	COMPRESSION SPRING 60.5X29.5X3.5		
11	130311	1	CONTROL FORK Diff. locking		
12	28557	2	O.ring		
13	129032	1	SPACER 30X21X50.5		
14	126143	1	COVER (19112)		
15	20793	2	Bolt M8x30		



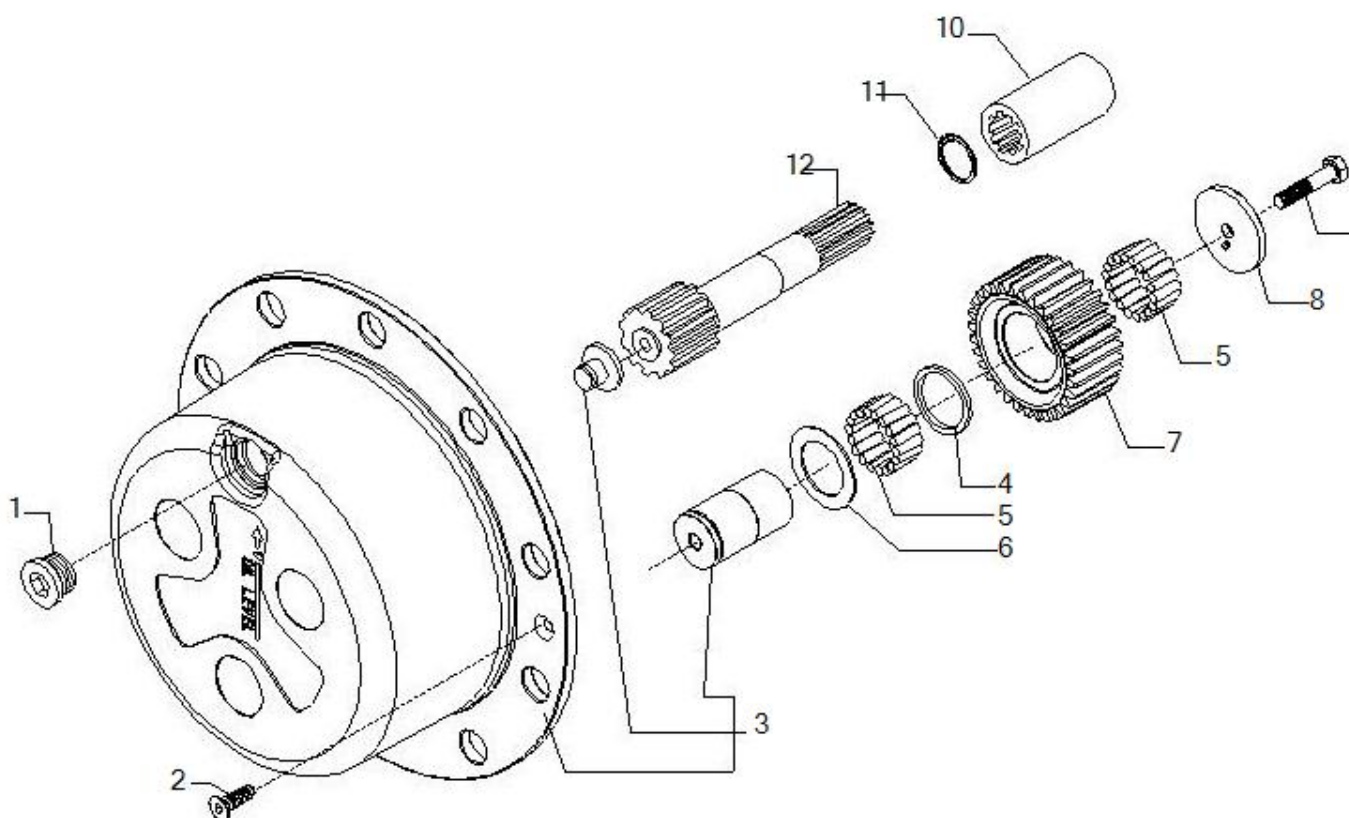
Pos	Ref	Qty	Description	Kit	Note
1	66748	2	Self-adjust kit		
2	143874	6	BRAKE DISC N 611-2		
3	136155	6	COUNTERPLATE Brake		
4	136648	2	DISC TOW SLEEVE		
5	134740	2	COUNTERPLATE Brake (13207)		
6	66616	2	Self-adjust kit		
7	141259	2	BRAKE PISTON (12015)		
8	133757	2	O-RING 209.14x3.53 VITON 90 SHORE		
9	139231	2	O-RING 4675 171.04x3.53 VITON 90 SHORE		
10	139359	2	AXLE SHAFT L743		



Pos	Ref	Qty	Description	Kit	Note
1	127920	6	SELF-LOCKING SCREW M8X1.25X20 10.9		
2	132622	2	WASHER 9X35X5 Fe 360 UNI 7070		
3	136122	2	CONTROL LEVER Brake		
4	133680	1	TORSION SPRING 4.5		
4	133681	1	TORSION SPRING 4.5		
5	137861	2	BUSHING 26.5X34X1		
6	137860	2	SPACER 38X26.3X17		
7	138815	2	BRAKE SHAFT		
8	32990	2	O.ring		
9	116792	2	BREATHER M10X1		
10	137864	2	HEX SOCKET HEAD CAP SCREW M6X1X16		
11	137858	2	BRACKET FERMO LEVA		
12	28349	2	BALL D 6.5 -		
13	138442	2	HEX HEAD SCREW M8X1X23.5		
14	138337	2	NUT CARRARO STD.00-20-90 M16X1.5 9 S Mn		
15	132689	2	CAM ACTUATOR BODY		
16	138338	2	LEVER STOP		
17	146821	1	LINEAR POSITION SWITCH DEUTSCH N.C.		



Pos	Ref	Qty	Description	Kit	Note
1	119907	10	STUD R22x2.5 - D22x1.5 - L88 - 10.9		
2	68045	2	Wheel hub kit		
3	28579	2	O.ring		
4	45180	4	TAPE ROLLER THRUST BEARING 158.75X109.53		
5	125233	2	CIRCLIP 238.9X16X3.5		
6	139633	2	EPIC. WHEEL CARRIER HUB (13057)		
7	125186	2	EPICYCLOIDAL RING GEAR Z77 (16768)		
8	125190	16	CENTERING BUSH		
9	119906	16	SELF-LOCKING SCREW M14X1.5X65 10.9		
10	47702	2	Seal ring		
11	22381	20	Nut M22x1.5		



Pos	Ref	Qty	Description	Kit	Note
1	125280	2	MAGNETIC PLUG M30X2		
2	20490	4	COUNTERSUNK HEAD SCREW UN		
3	66570	2	PLANETARY CARRIER KIT		
4	138778	6	FIFTH WHEEL 52X45.2X2		
5	28301	37.20	NEEDLE 5x19.8 (TENS OF 117874)		
6	138689	6	FIFTH WHEEL 44.7X65X1.5		
7	138736	6	EPIC.PLANETARY GEAR Z31 M3 L53		
8	644650	6	THRUST SHOE 11X65X6 C67 UNI 7064-82		
9	125229	6	SELF-LOCKING SCREW M10X1.25X50 10.9		
10	131299	2	LINK BUSH		
11	24877	2	Snap ring		
12	138735	2	AXLE SHAFT WITH GEAR L220.5 Z13 M3		