



CARRARO

Catalogo Parti Di Ricambio

Spare Parts List

TRASMISSIONE TLB2

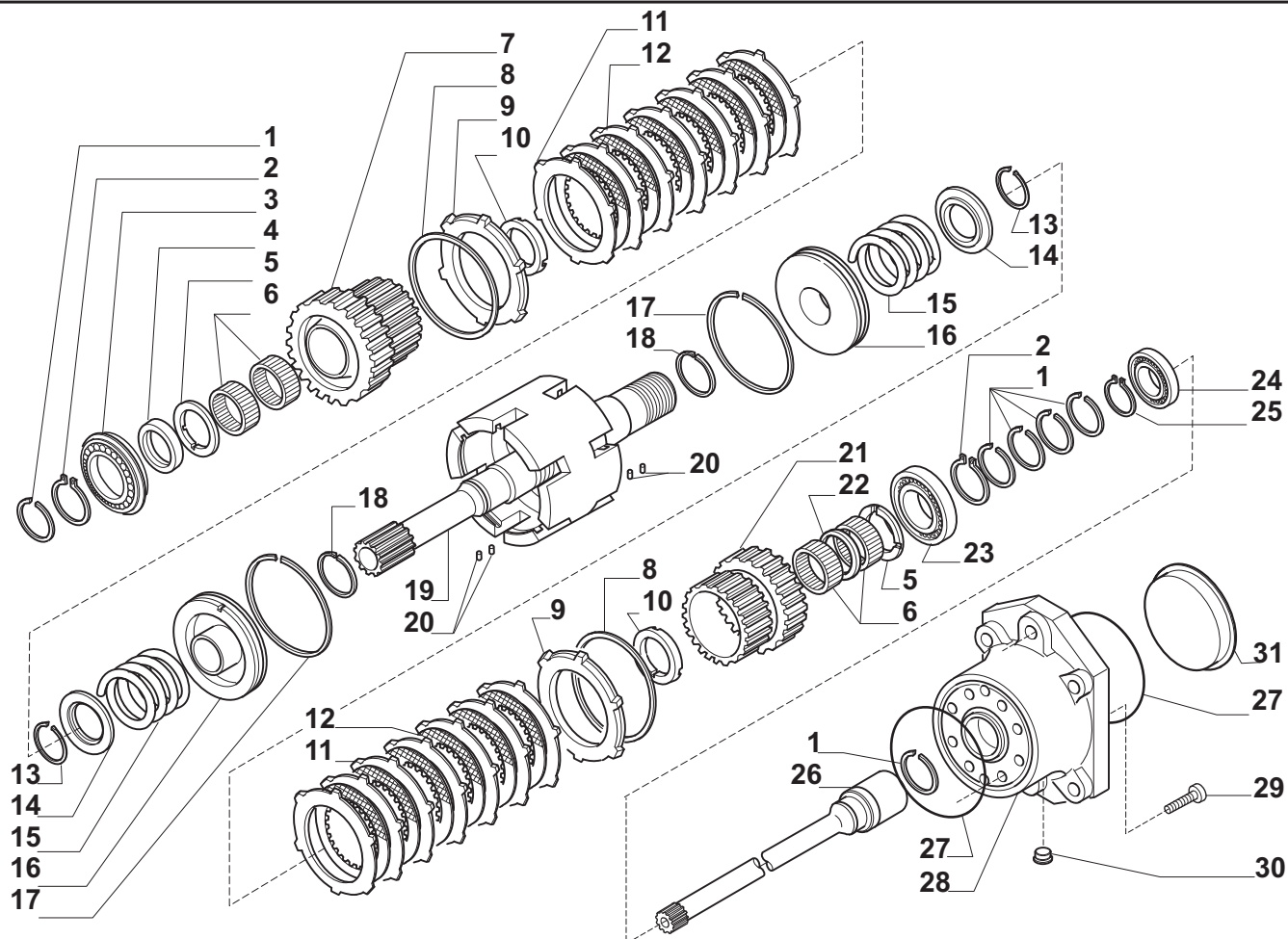
TLB2 TRANSMISSION

REF. 141166

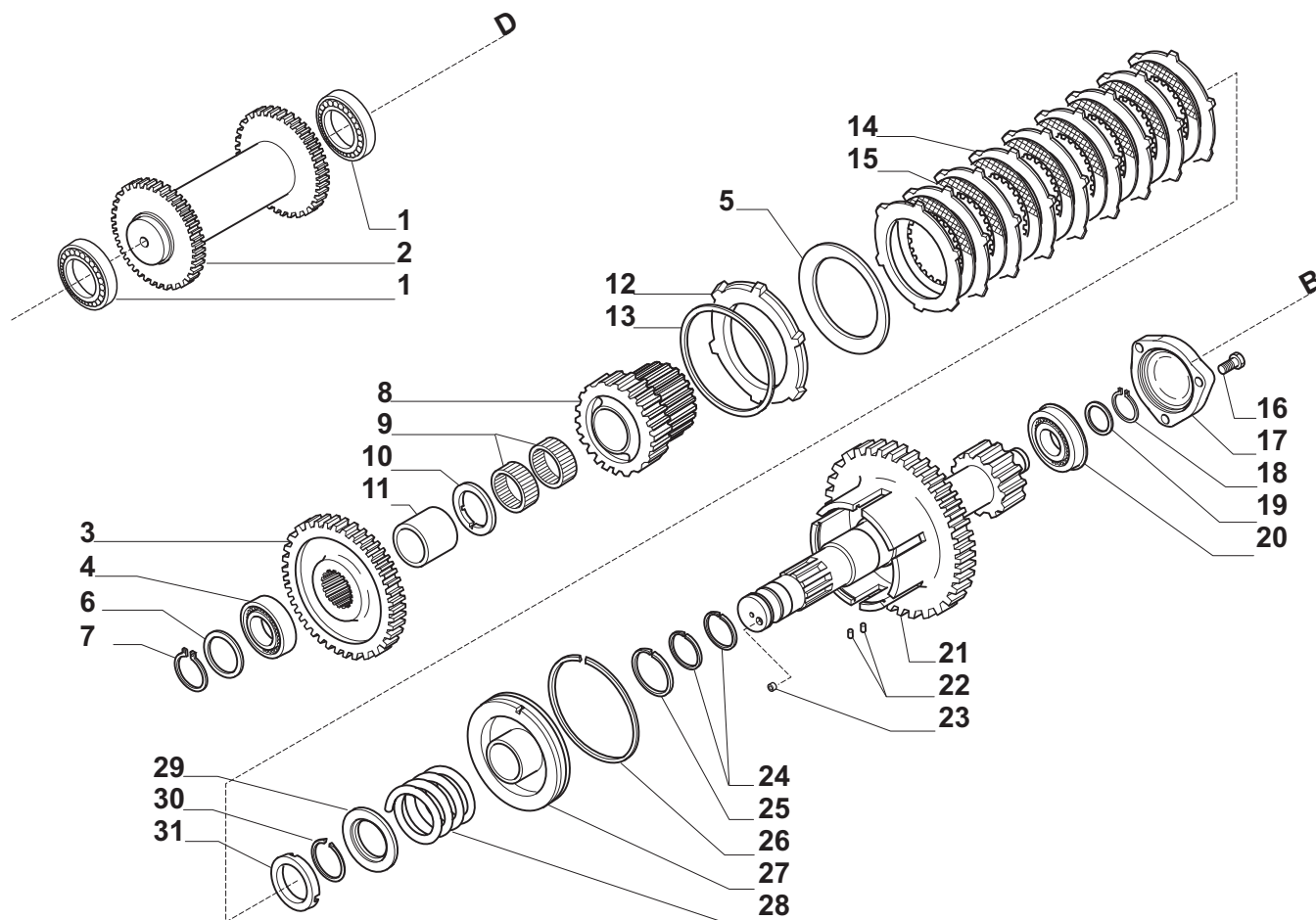
- 1.0.1 Scatola trasmissione
Transmission housing
- 2.0.1 Alberi d'entrata e di trasmissione PTO (asse A)
Input and PTO transmission shafts (axe A)
- 3.0.1 Albero rinvio (asse D) e albero primario (asse B)
Reverse shaft (axe D) and primary shaft (axe B)
- 4.0.1 Albero secondario (asse C)
Secondary shaft (axe C)
- 4.1.1 Albero secondario (asse C)
Secondary shaft (axe C)
- 5.0.0 Albero di uscita (asse E)
Output shaft (axe E)
- 6.0.0 Pompa olio
Oil pump
- 7.0.1 Convertitore
Converter
- 8.0.2 Sistema di gestione idraulica/elettronica
Electronic/hydraulic system
- 9.0.1 Tubazioni e sensori
Pipes and sensors
- 10.0.0 Sommario kit
Kit summary

Il presente catalogo è valido a partire dal N° di matricola 101.

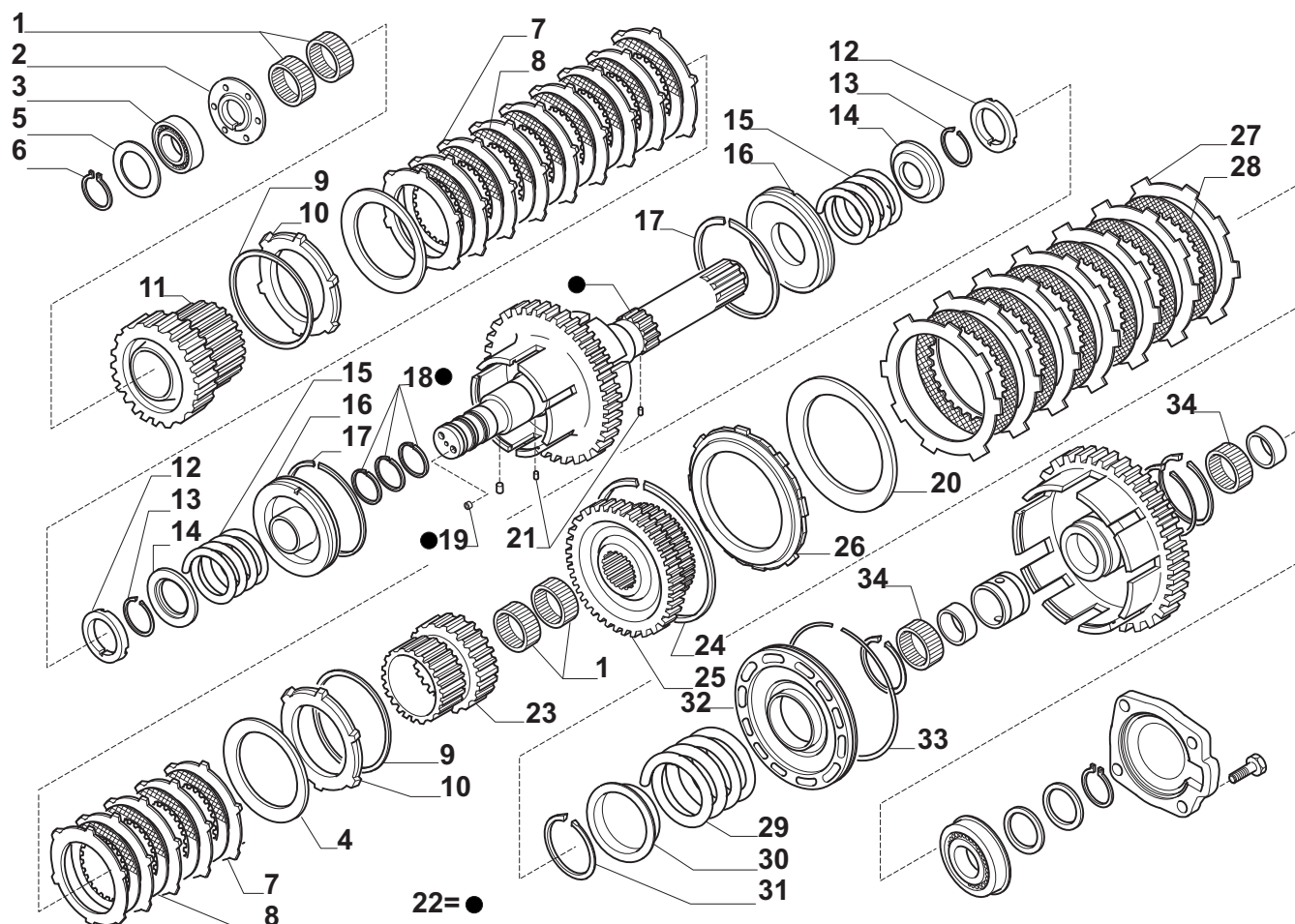
This catalogue is valid from serial number 101.



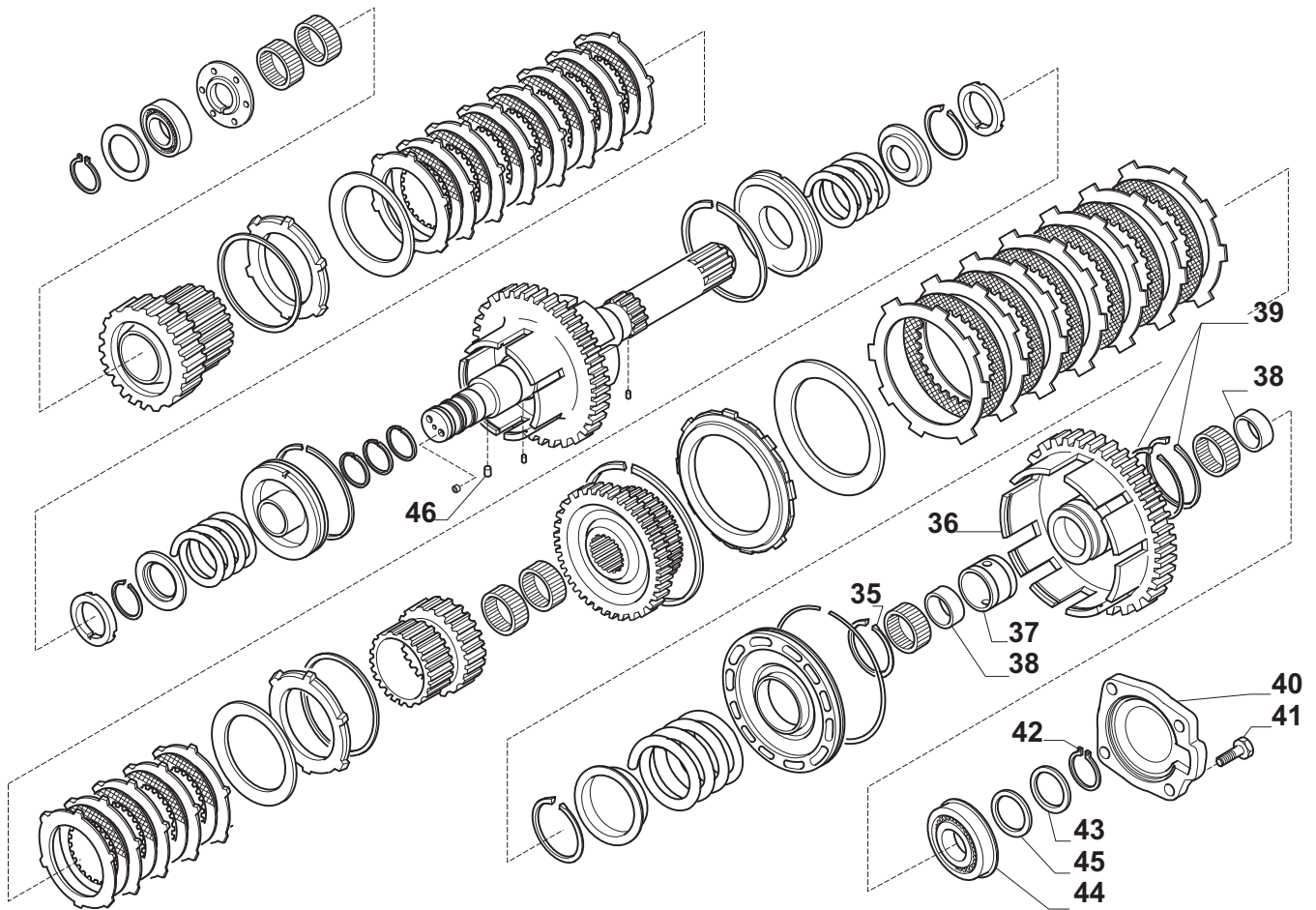
Pos.	Ref.	Q.ty	Descrizione	Description	Kit	Note
1	138787	6	Anello tenuta	Lockring		
2	024800	2	Anello seeger D45	Snap ring D45		
3	026160	1	Cuscinetto	Bearing		
4	129885	1	Distanziale	Spacer		
5	129886	2	Ralla	Thrust washer		
6	028041	4	Gabbia rullini	Needle bearing bush		
7	138392	1	Ingranaggio Z37	Gear Z37		
8	025067	2	Anello arresto	Lockring		
9	135020	2	Anello arresto	Lockring		
10	129901	2	Ralla	Thrust washer		
11	133924	14	Controdisco frizione	Clutch drive plate		
12	138574	12	Disco frizione	Clutch plate		
13	025031	2	Anello arresto	Lockring		
14	133912	2	Coperchio fermo molla	Lock-spring cover		
15	129896	2	Molla	Spring		
16	133905	2	Pistone frizione	Clutch piston		
17	138790	2	Anello tenuta	Lockring		
18	138788	2	Anello tenuta	Lockring		
19	135198	1	Albero entrata cavo comp.	Inner shaft		
20	024321	4	Spina elastica D3x8	Split pin D3x8		
21	138358	1	Ingranaggio Z37	Gear Z37		
22	129903	1	Distanziale	Spacer		
23	025829	1	Cuscinetto	Bearing		
24	025735	1	Cuscinetto	Bearing		
25	024785	1	Anello seeger D30	Snap ring D30		
26	138383	1	Albero trasm. PTO	PTO transmission shaft		
27	028571	2	Anello OR	O.ring		
28	642170	1	Flangia	Flange		
29	021410	8	Vite M10x30	Bolt M10x30		
30	030720	2	Tappo	Plug		
31	145717	1	Tappo D 127,5	Plug D127,5		

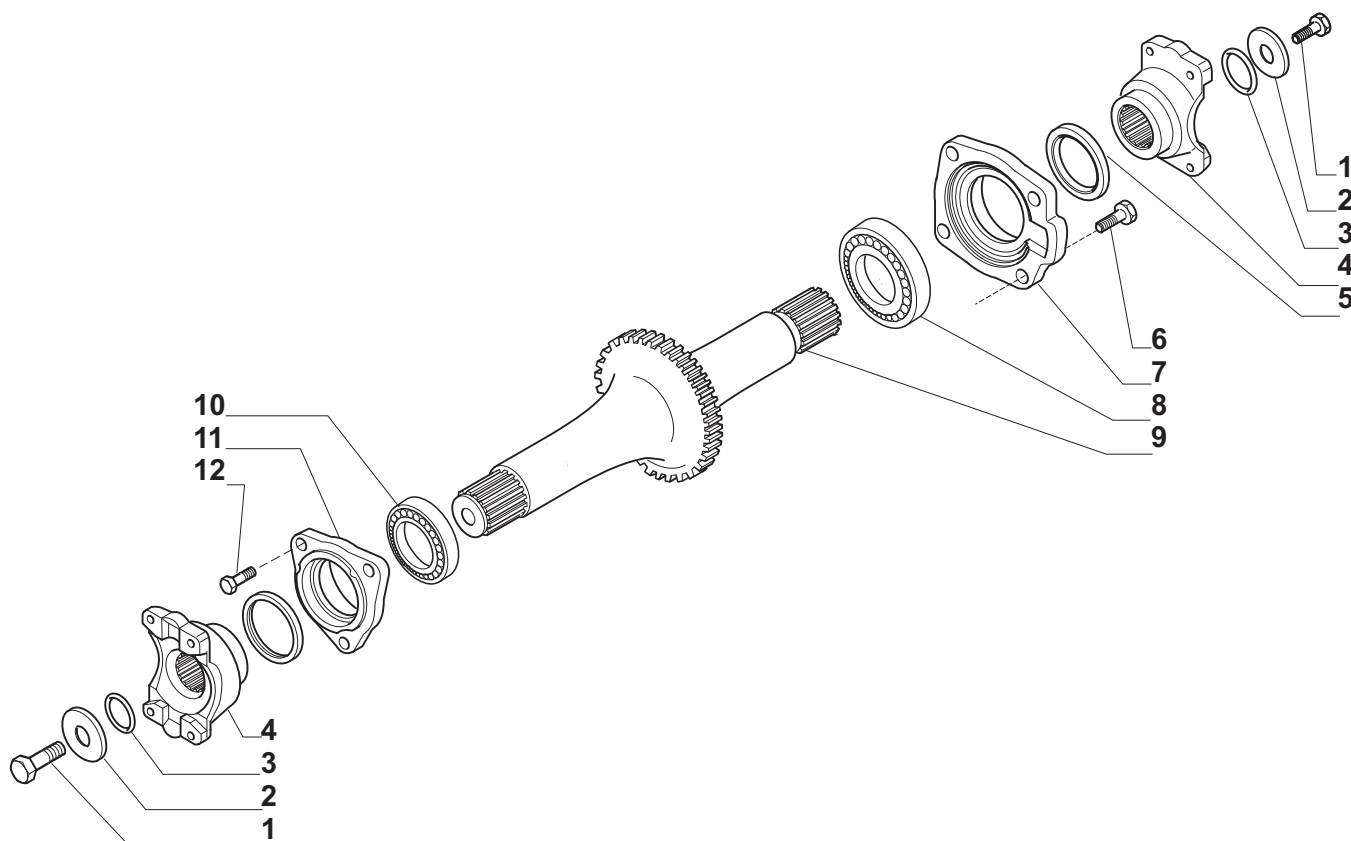


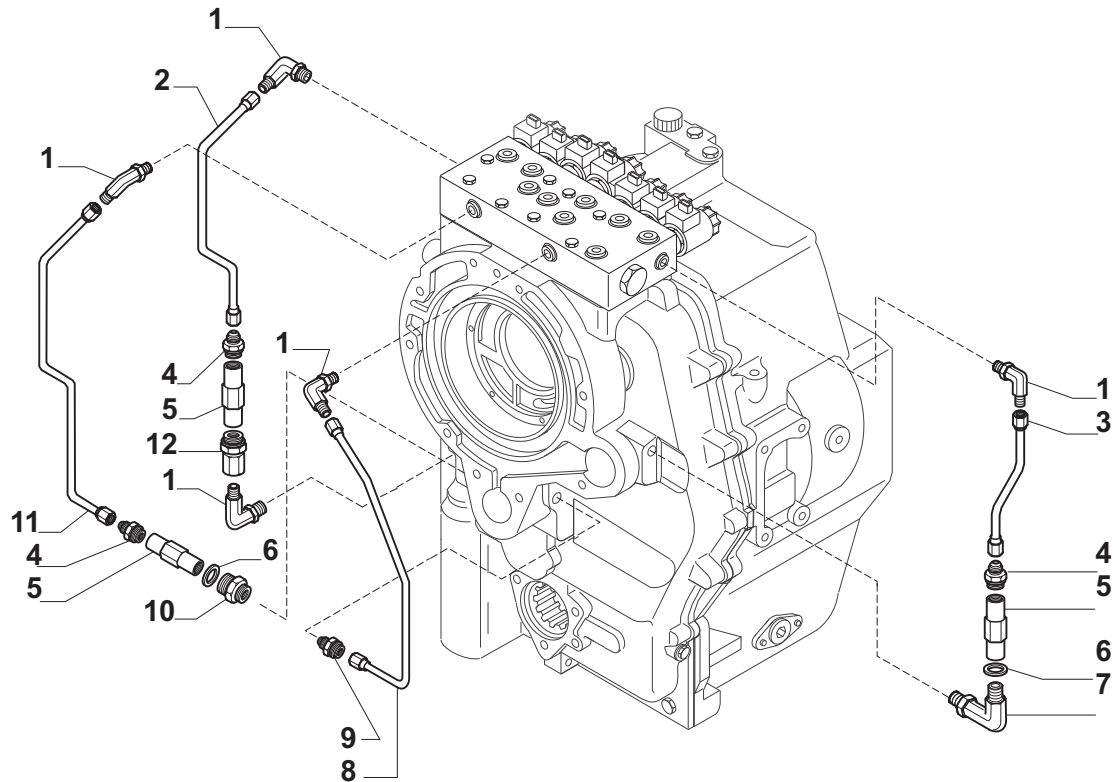
Pos.	Ref.	Q.ty	Descrizione	Description	Kit	Note
1	025808	2	Cuscinetto	Bearing		from s/n 1223 - was 135247
2	137647	1	Albero rinvio Z27	Reverse shaft Z27		
3	133174	1	Ingranaggio Z45	Gear Z45		
4	025809	1	Cuscinetto	Bearing		
5	140116	1	Molla a tazza	Belleville washer		
6	125829	1	Rondella	Washer		
7	025053	1	Anello arresto	Lockring		
8	138362	1	Ingranaggio Z30	Gear Z30		
9	28015	2	Gabbia rulli	Needle bearing bush		
10	129886	1	Ralla	Thrust washer		
11	138359	1	Distanziale	Spacer		
12	140332	1	Anello arresto	Lockring		
13	025067	1	Anello arresto	Lockring		
14	133980	9	Controdisco frizione	Clutch drive plate		
15	138574	8	Disco frizione	Clutch plate		
16	020852	3	Vite M10x30	Bolt M10x30		
17	133372	1	Coperchio	Cover		
18	024790	1	Anello seeger D35	Snap ring D35		
19	125830	1	Rondella	Washer		
20	026188	1	Cuscinetto	Bearing		
21	138363	1	Albero Z58/Z17	Shaft Z58/Z17		
22	024321	2	Spina elastica D3x8	Split pin D3x8		
23	023834	1	Rivetto	Rivet		
24	138786	2	Anello tenuta	Lockring		
25	138788	1	Anello tenuta	Lockring		
26	138790	1	Anello tenuta	Lockring		
27	140126	1	Pistone frizione	Clutch piston		
28	129896	1	Molla	Spring		
29	133912	1	Coperchio fermo molla	Lock-spring cover		
30	025031	1	Anello arresto	Lockring		
31	138986	1	Ralla	Thrust washer		



Pos.	Ref.	Q.ty	Descrizione	Description	Kit	Note
1	028041	4	Gabbia rullini	Needle bearing bush		
2	149139	1	Ralla	Washer		
3	025809	1	Cuscinetto	Bearing		
4	140117	1	Molla a tazza	Belleville washer		
5	125829	1	Rondella	Washer		
6	025053	1	Anello arresto	Lockring		
7	133980	14	Controdisco frizione	Clutch drive plate		
8	138574	12	Disco frizione	Clutch plate		
9	025067	2	Anello arresto	Lockring		
10	140332	2	Anello arresto	Lockring		
11	138368	1	Ingranaggio Z44	Gear Z44		
12	138986	2	Ralla	Trust washer		
13	025031	2	Anello arresto	Lockring		
14	133912	2	Coperchio fermo molla	Lock-spring cover		
15	129896	2	Molla	Spring		
16	140126	2	Pistone frizione	Clutch piston		
17	138790	2	Anello tenuta	Lockring		
18	138786	3	Anello tenuta	Lockring	068853	
19	023834	2	Rivetto	Rivet	068853	
20	140116	2	Molla a tazza	Belleville washer		
21	024321	2	Spina elastica D3x8	Split pin D3x8		
22	068853	1	Kit Albero Z58 3/4 ^a	Shaft Z58 3/4 th kit		
23	138366	1	Ingranaggio Z30	Gear Z30		
24	025066	1	Anello arresto	Lockring		
25	138365	1	Ingranaggio Z51	Gear Z51		
26	138381	1	Anello arresto	Lockring		
27	138377	7	Controdisco frizione	Clutch drive plate		
28	138378	6	Disco frizione	Clutch plate		
29	139348	1	Molla	Spring		
30	139347	1	Coperchio fermo molla	Lock-spring cover		
31	025021	1	Anello arresto	Lockring		
32	145898	1	Pistone frizione	Clutch piston		
33	145899	1	Anello tenuta	Lockring		
34	028015	2	Gabbia rulli	Needle bearing bush		

[illegible]

[illegible]

[illegible]

