

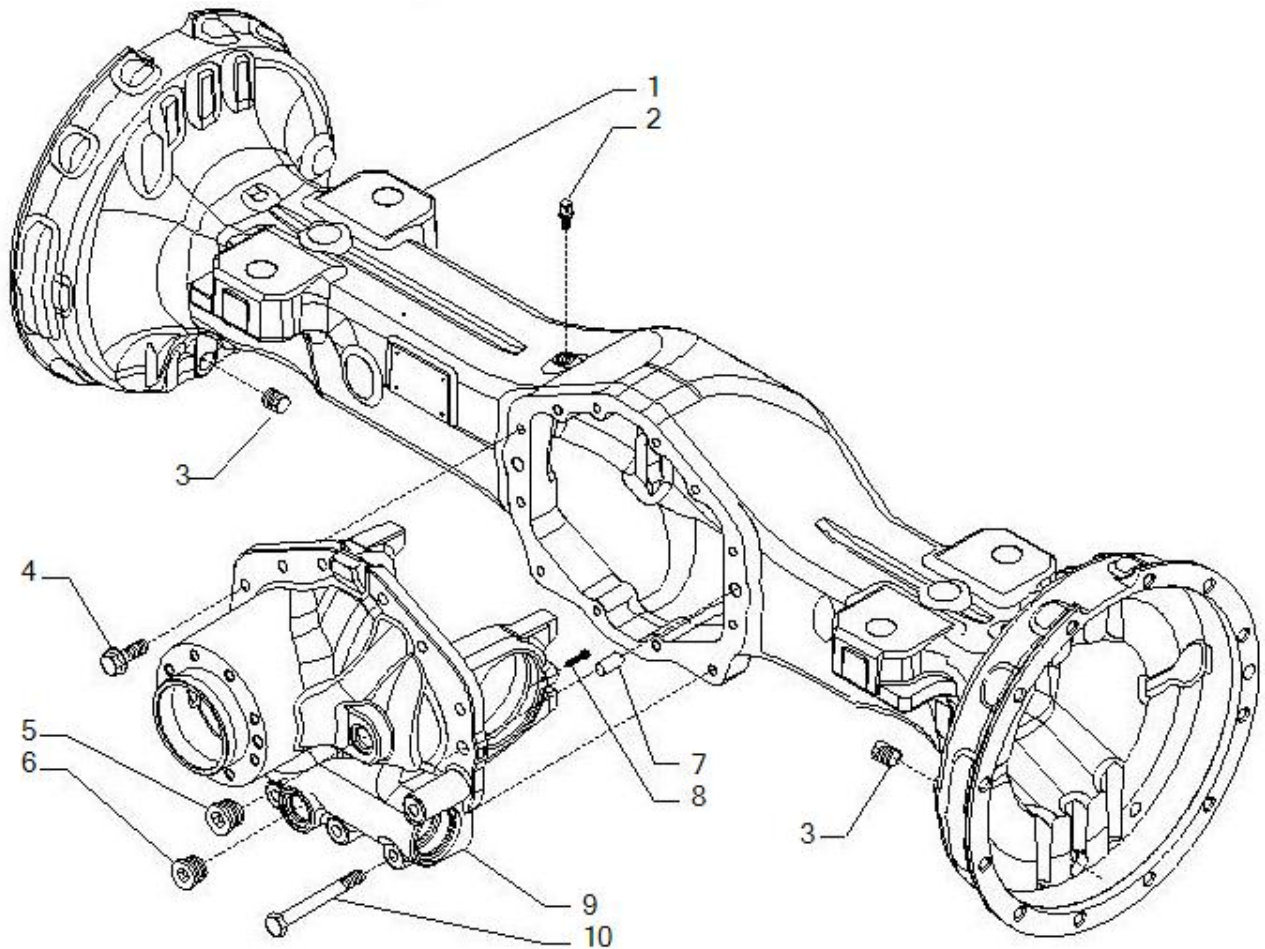


## **Spare parts catalogue**

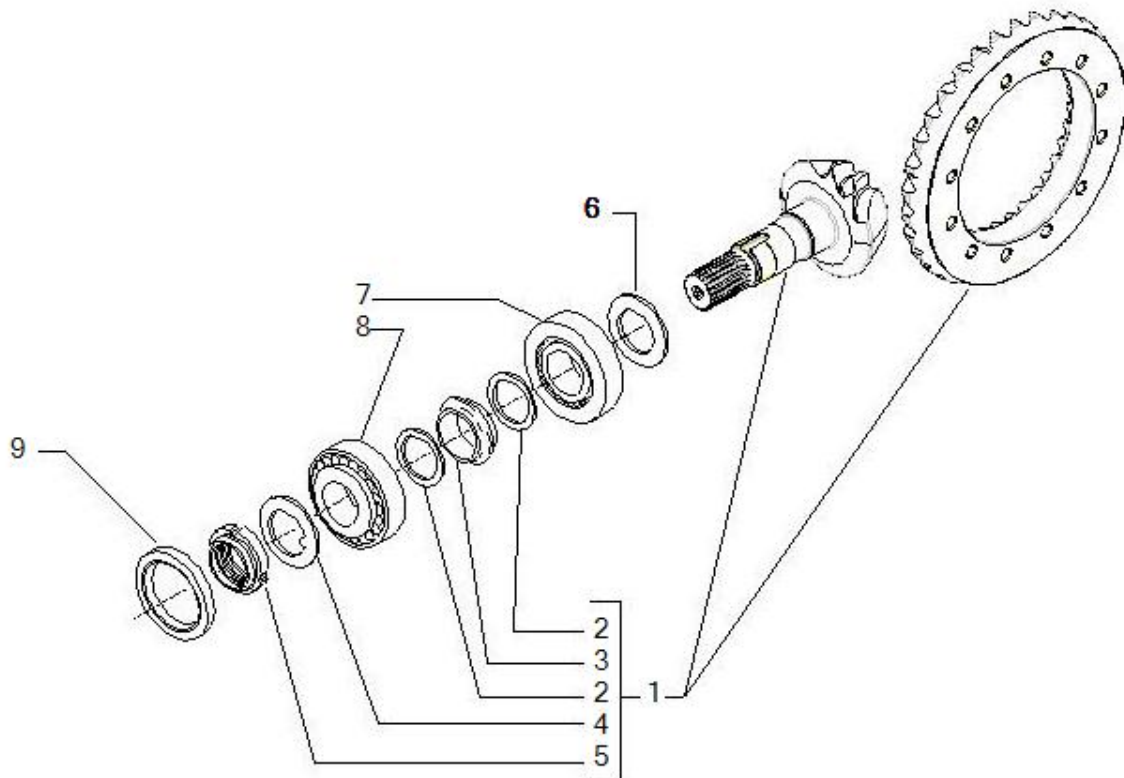
**AXLE 28.44FR\_(ECO19329){0001}}**

**REF: 643560**

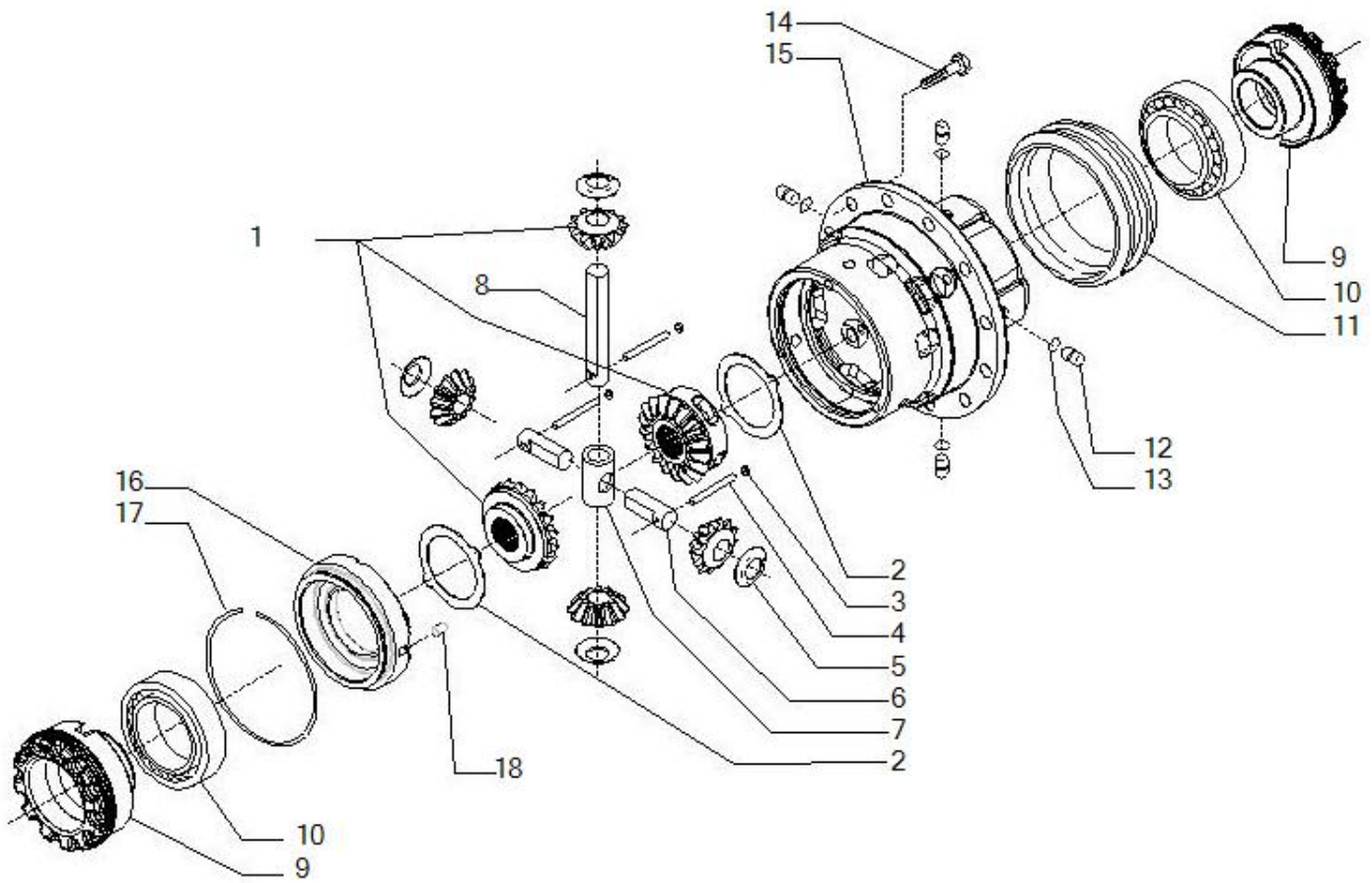
- 1.1    Axle housing**
- 2.1    Bevel gear set**
- 3.1    Differential**
- 4.1    Differential locking**
- 5.1    Brakes**
- 6.1    Wheel hub and final reduction**
- 7.1    Brake caliper**
- 8.1    pinza freno 2**



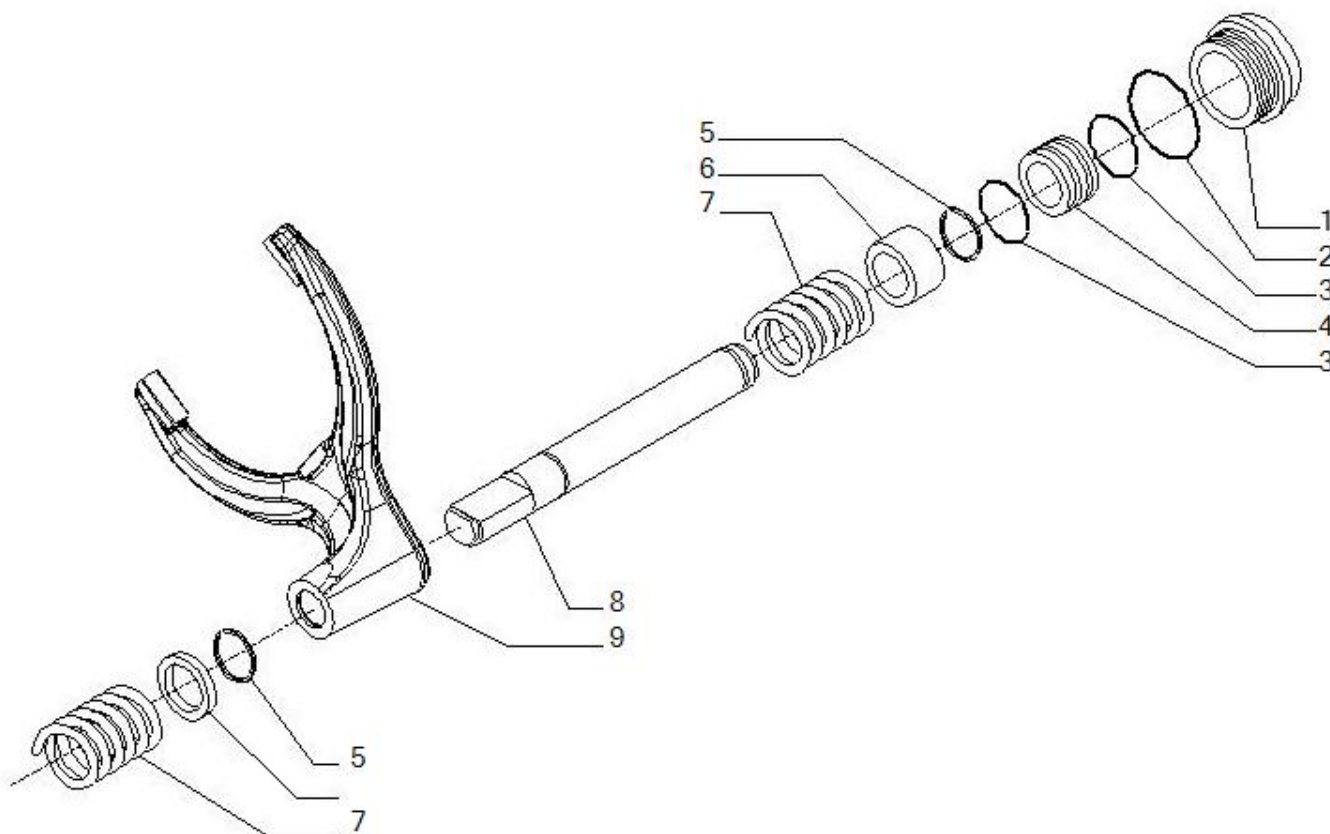
Pos	Ref	Qty	Description	Kit	Note
1	642407	1	BEAM RI 28.44FR-1800 (370646) L1366.5		
2	104988	1	BREATHER M10X1		
3	92270	2	MAGNETIC PLUG M22X1.5		
4	125827	8	HEX HEAD FLANGE SCREW M12X1.75X29 12.9 C		
5	145465	1	PLUG M24X1.5		
6	125280	1	MAGNETIC PLUG M30X2		
7	87660	2	PARALLEL PIN 15X35		
8	21375	2	Bolt M6x25		
9	642409	1	DIFF. SUPPORT (10713)		
10	20946	4	HEX HEAD SCREW UNI 5737 M12X100 8.8		



<b>Pos</b>	<b>Ref</b>	<b>Qty</b>	<b>Description</b>	<b>Kit</b>	<b>Note</b>
1	68346	1	KIT COPPIA CONICA 12/33		
2	125829	2	THRUST SHOE 40.5X50X2 MAT101 CARRARO STD		
3	126369	1	ELASTIC SPACER 45X42X20		
4	113717	1	WASHER 41X69X2 /RONDELLA FERMO GHIERA PI		
5	115054	1	RING NUT M40X1.5		
6	134186	1	SHIM 75X45.3X2.5		
6	134187	1	SHIM 75X45.3X2.6		
6	134188	1	SHIM 75X45.3X2.7		
6	134189	1	SHIM 75X45.3X2.8		
6	134190	1	SHIM 75X45.3X2.9		
6	134191	1	SHIM 75X45.3X3		
6	134192	1	SHIM 75X45.3X3.1		
6	134193	1	SHIM 75X45.3X3.2		
6	134194	1	SHIM 75X45.3X3.3		
6	134195	1	SHIM 75X45.3X3.4		
7	27395	1	Bearing		
8	27350	1	Bearing		
9	145050	1	CASSETTE RAD.SHAFT SEALX/		

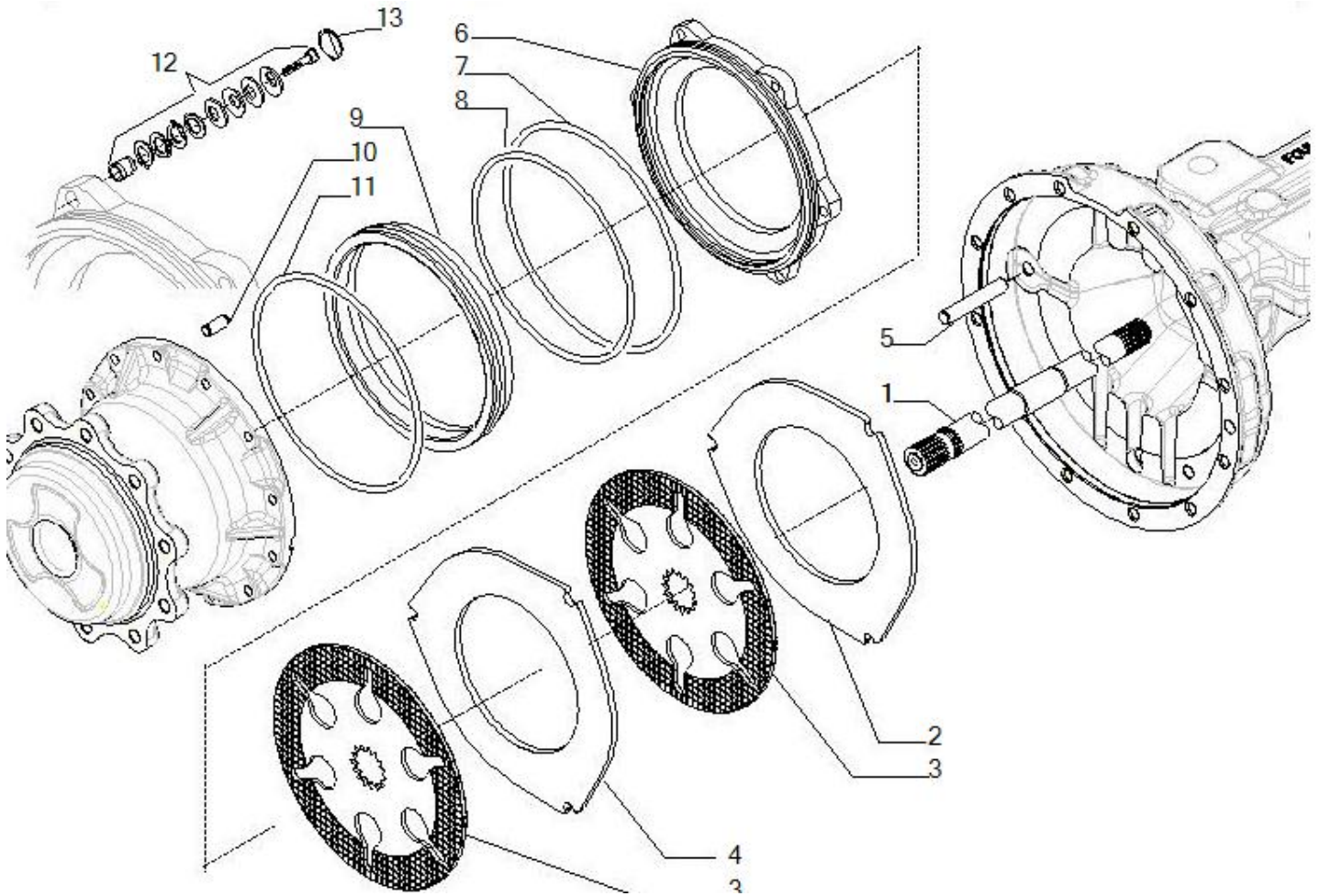


Pos	Ref	Qty	Description	Kit	Note
1	68598	1	DIFF. GEARS KIT		
2	148920	2	COUNTERPLATE Diff. locking		
2	21558	3	Plug M10x1		
4	24396	3	Pin D8x45		
5	117171	4	SPHERICAL WASHER 25.22X60 CuSn8 H135 - E		
6	149615	2	DIFF.PLANET.GEAR PIN L68.5 D25		
7	359742	1	DIFFERENTIAL SPIDER 4 SAT		
8	127907	1	DIFF.PLANET.GEAR PIN D25		
9	380403	2	RING NUT M104X2 (013583) C40 UNI EN 1008		
10	27367	2	TAPE ROLLER THRUST BEARING 32013X 100X65		
11	148562	1	DIFF. LOCKING SLEEVE		
12	138651	4	RUNG INNESTO BLOCC.DIFF.		
13	28219	4	O.ring		
14	372911	12	HEX HEAD FLANGE SCREW DIN 6921 M12X25 12		
15	359689	1	DIFFERENTIAL HOUSING (10408)		
16	359690	1	DIFFERENTIAL HOUSING COVER (10409)		
17	24981	1	Locking ring		
18	28389	1	Roller 8x12		

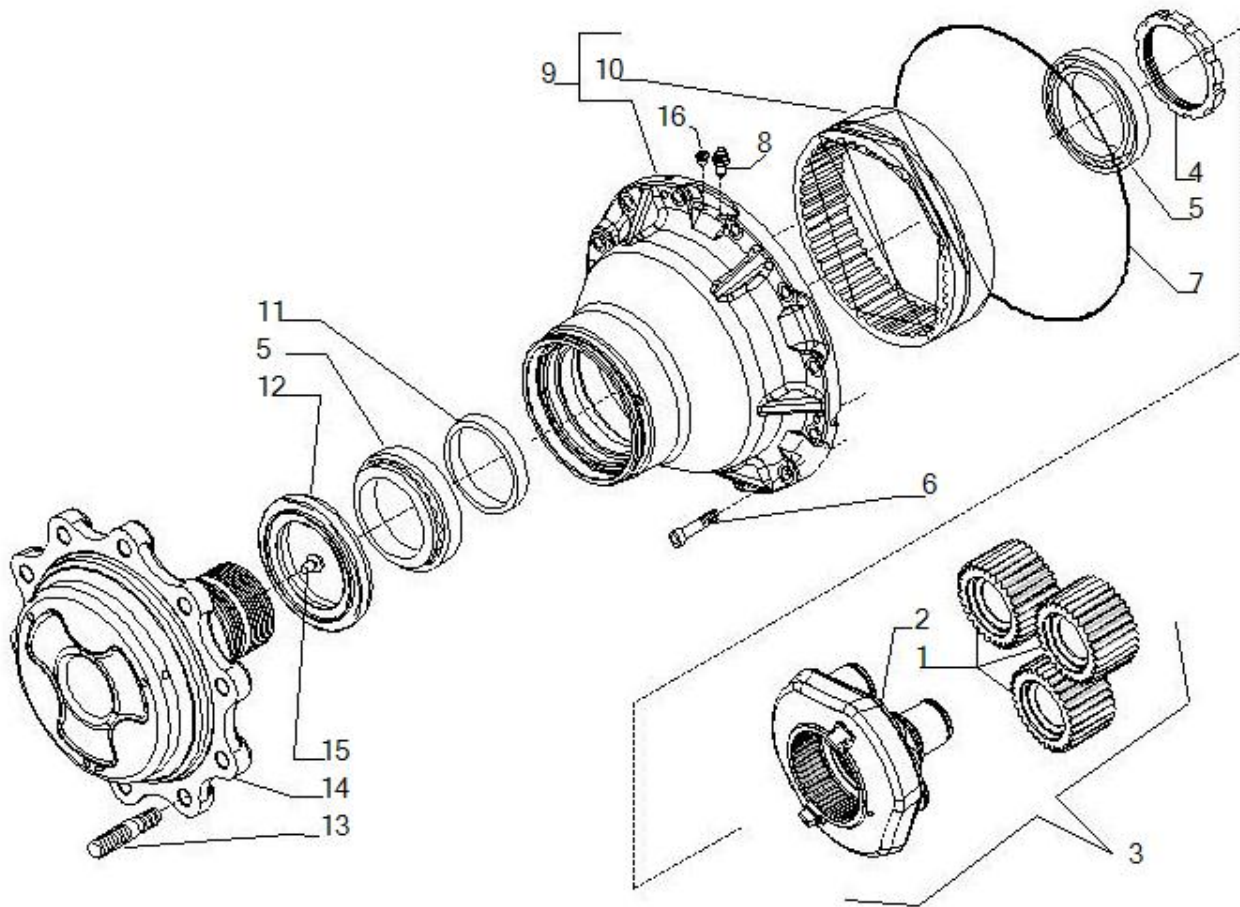


<b>Pos</b>	<b>Ref</b>	<b>Qty</b>	<b>Description</b>	<b>Kit</b>	<b>Note</b>
1	148564	1	CYLINDER BLOCC.DIFF.		
2	28512	1	Joint OR		
3	28121	2	O.ring		
4	139139	1	DIFFERENTIAL LOCKING PISTON		
5	24736	2	Locking ring		
6	146769	1	BUSH 36X20X31		
7	125756	2	COMPRESSION SPRING 60.5X29.5X3.5		
8	148783	1	CONTROL PIN BLOCC.DIFF.		
9	148563	1	CONTROL FORK Diff. locking		
11	146770	1	SPACER 32X20X8		



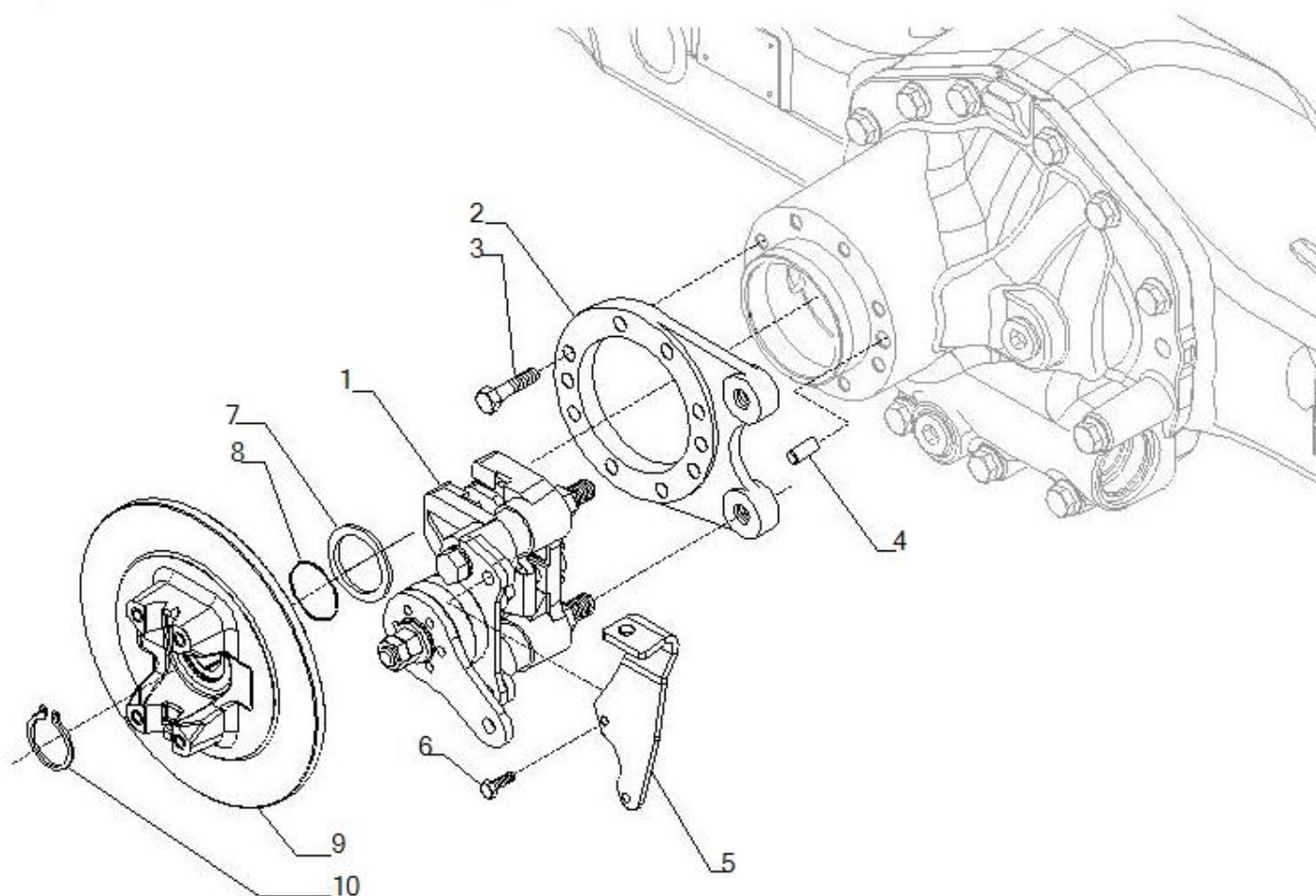


<b>Pos</b>	<b>Ref</b>	<b>Qty</b>	<b>Description</b>	<b>Kit</b>	<b>Note</b>
1	148485	1	AXLE SHAFT WITH GEAR L807 Z15 M2.9295		
1	148484	1	AXLE SHAFT WITH GEAR L701.9 Z15 M2.9295		
2	148487	2	COUNTERPLATE Brake SP.5		
3	148795	4	BRAKE DISC		
4	148488	2	COUNTERPLATE Brake SP.8		
5	130130	6	PARALLEL PIN 14X79		
6	380400	2	BRAKE PISTON (010416) ALTA PRESSIONE		
7	143837	2	O-RING 2-379 278.77X5.33		
8	142207	2	O-RING 2-378 266.07X5.33 90S61050		
9	380401	2	BRAKE CYLINDER (010415) ALTA PRESSIONE		
10	117339	2	PARALLEL PIN 16X40		
11	28649	2	O-RING 2-275 VITON 75 41050		
12	149241	6	SELF-ADJUST KIT 0.6		
13	24958	6	CIRCLIP J 30X1.2 L		

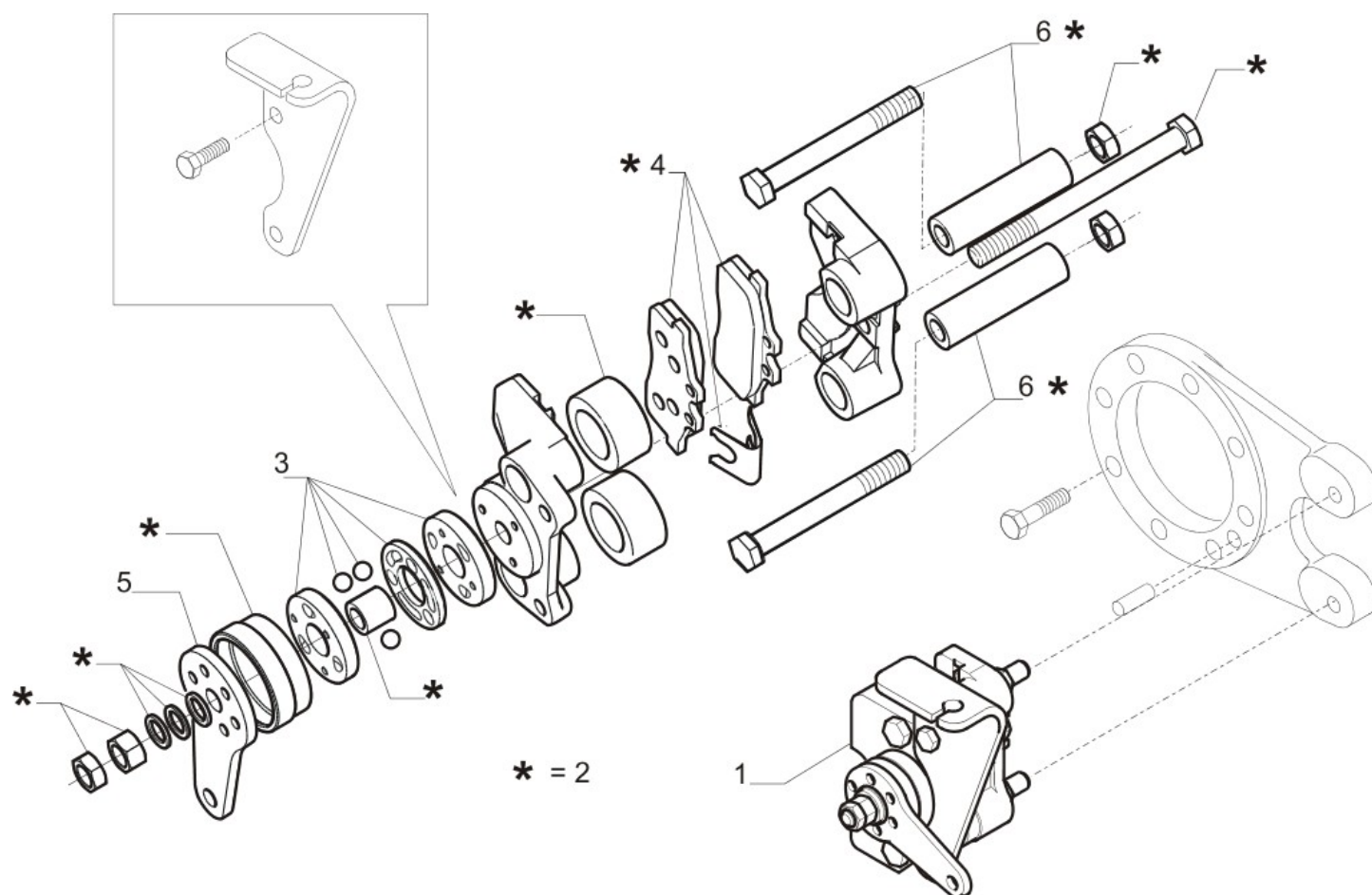


Pos	Ref	Qty	Description	Kit	Note
1	64194	2	GEARS KIT		
2	642998	2	PLANETARY CARRIER (10772)		
3	643002	2	PLANETARY CARRIER ASSEMBLY 28.50 MR2		
4	148626	2	RING NUT M108X2		
5	45180	4	TAPE ROLLER THRUST BEARING		
6	21967	24	HEX SOCKET HEAD CAP SCREW		
7	28565	2	O-RING 41300 2-279 329.8x3.53 NITRILICO		
8	116792	2	BREATHER M10X1		
9	68353	2	Hub - ring gear kit		
10	142833	2	EPICYCLOIDAL RING GEAR Z81 M2.9295		
11	148942	2	SPACER 119X110.2X23		
12	149703	2	CASSETTE RAD.SHAFT SEAL 150X180X/ 14.5/1		
13	116957	20	STUD 10.9 UNI EN ISO 898-1 B6 - CARRARO		
14	148482	2	WHEEL FLANGE (10369)		
15	115682	2	DRIVE SHAFT STOP PAD		
16	21570	2	Plug		





Pos	Ref	Qty	Description	Kit	Note
2	380399	2	BRAKE CALIPER FLANGE (013129)		
3	21368	8	HEX SOCKET HEAD CAP SCREW UNI 5931 M12X3		
4	121710	2	PARALLEL PIN CARRARO STD N. 0-20-90 12X2		
5	644220	2	HANGER		
6	21477	2	Bolt		
7	123402	1	WASHER C70 UNI 3545-68A NASTRO TEMPRATO		
8	28532	1	O-RING 3137 2-126 34.6X2.		
9	146048	1	BRAKE DISC+FLANGE YOKE 1410 12790		
10	24789	1	Snap ring		



Pos	Ref	Qty	Description	Kit	Note
1	149826	1	BRAKE CALIPER		
2	48645	1	BRAKE OVERHAUL KIT 304-71		
3	49465	1	Cam repair kit		
4	48646	1	Pad kit		