



Spare parts catalogue

AXLE 26.43M_(CM12769){0001}}

REF: 635624

1.1 Axle housing

2.1 Swivel housings and steering cylinder

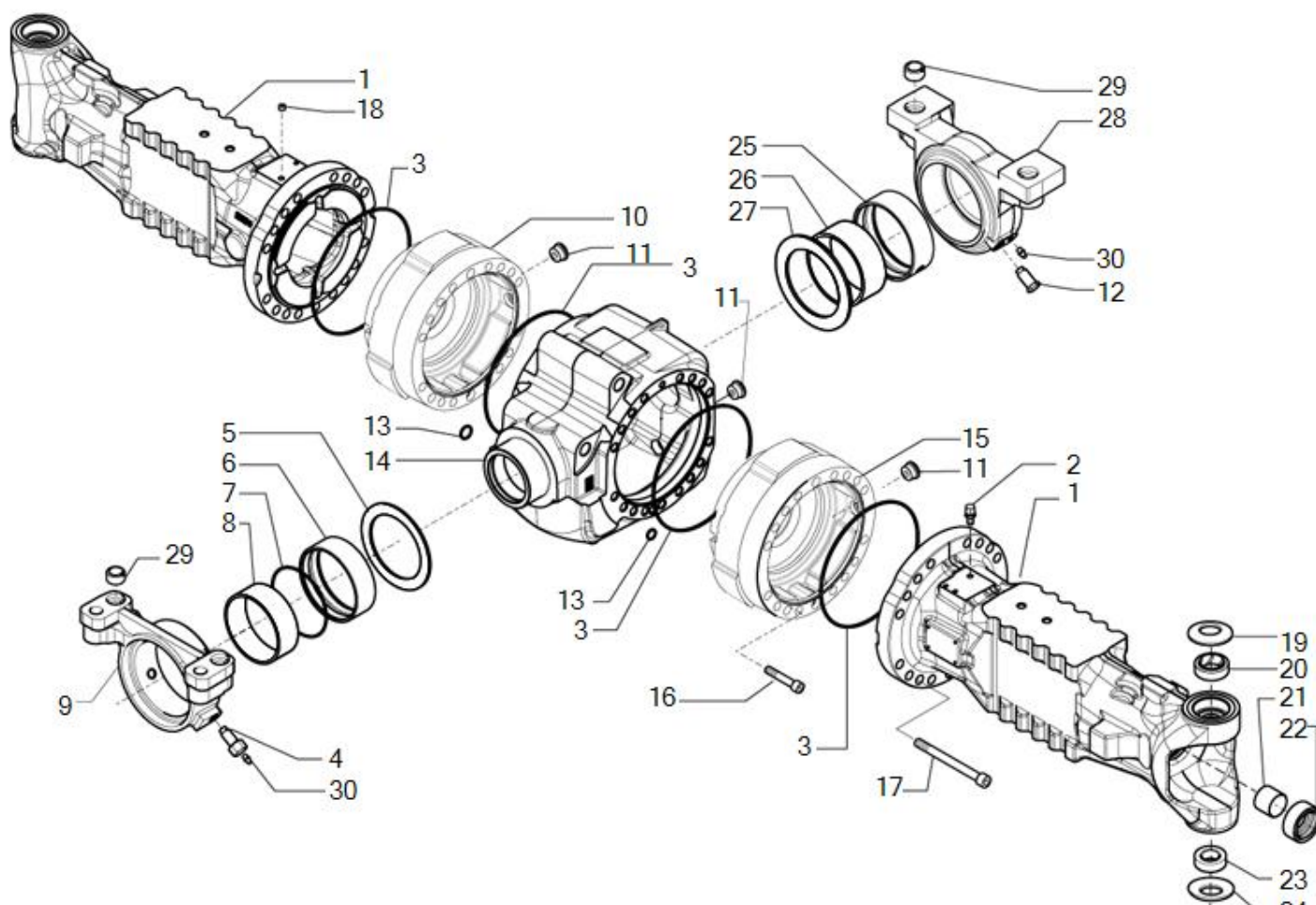
3.1 Bevel gear set

4.1 Differential

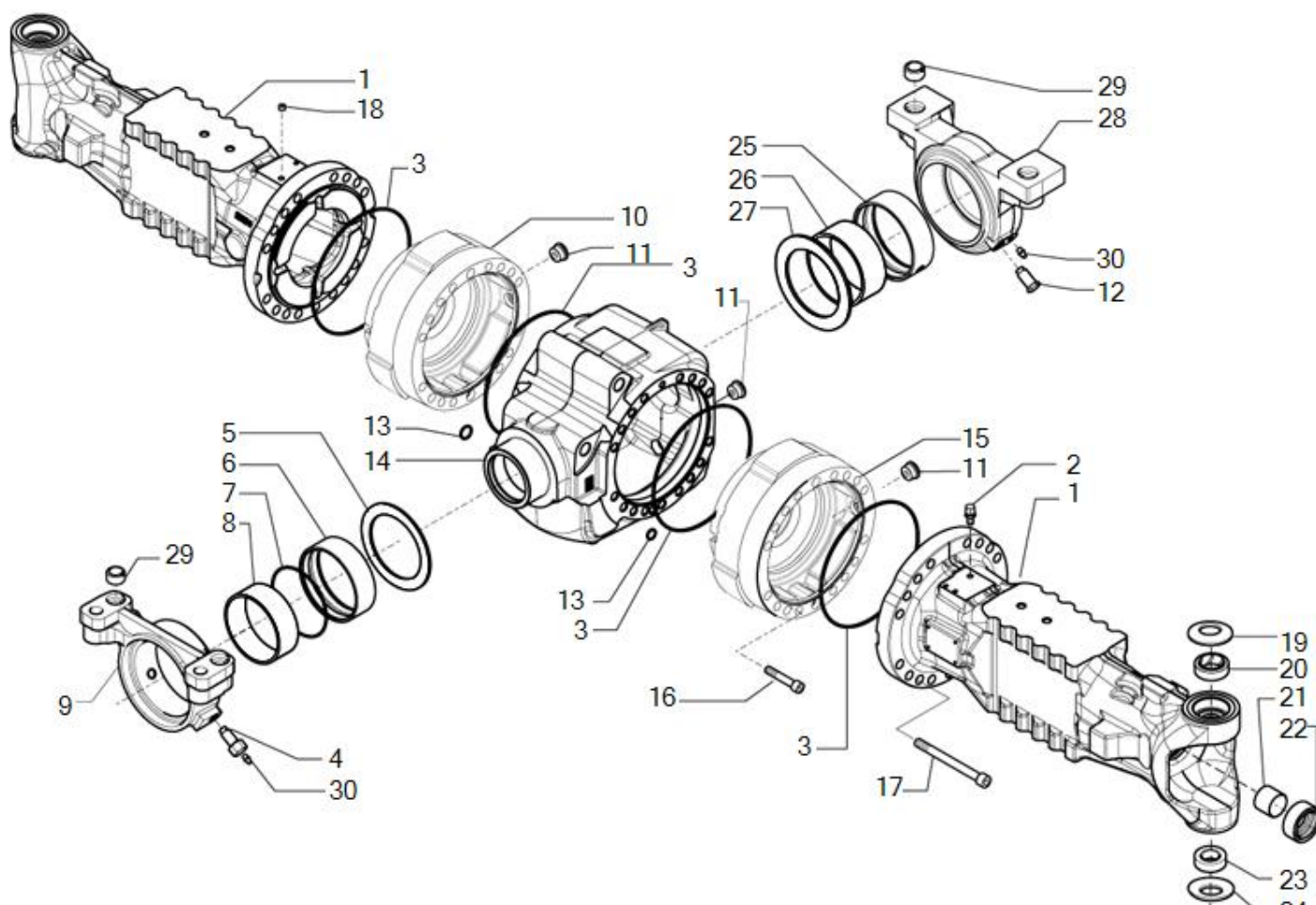
5.1 Double U-joint

6.1 Wheel hub

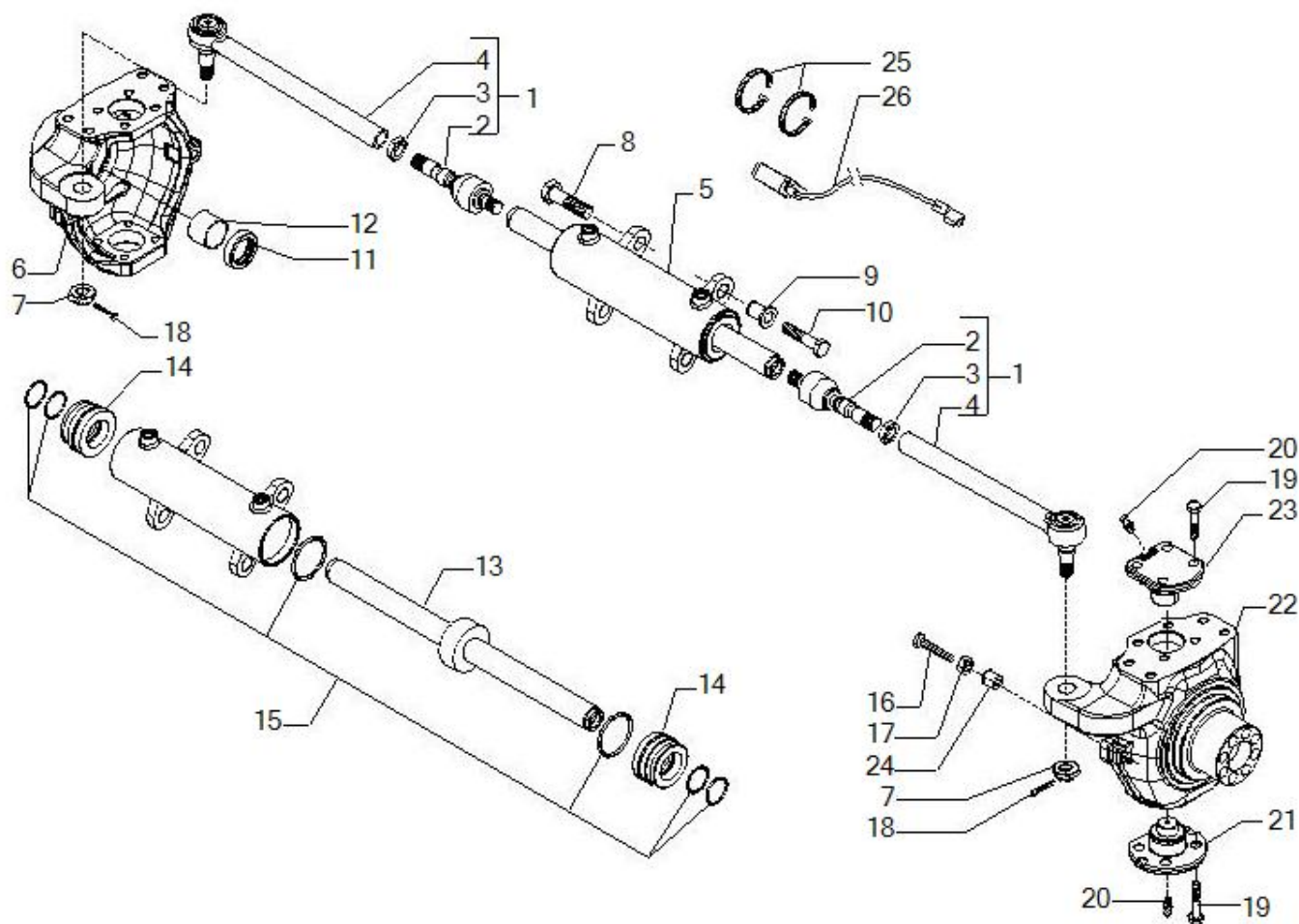
7.1 Final reduction



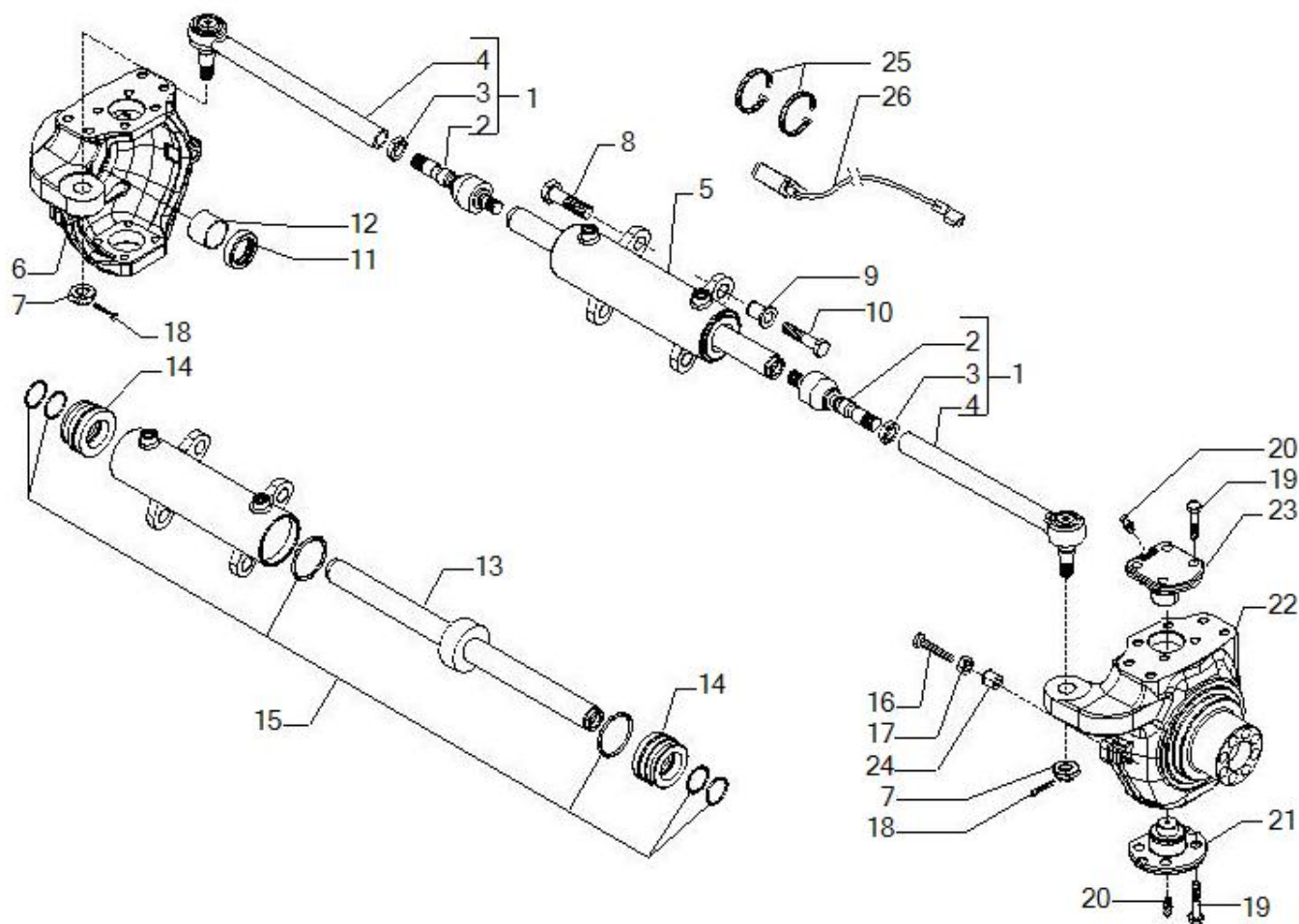
Pos	Ref	Qty	Description	Kit	Note
1	642050	2	BEAM TRUMPET SI (012324)		
2	104988	1	BREATHER M10X1		
3	28562	4	O-RING 4900 2-270 228.19X		
4	116530	1	DRILLED SCREW		
5	124591	1	THRUST SHOE 154X115.5X5 / RALLA		
6	123475	1	SWING BUSHING 125X135X42		
7	28498	1	O-RING 125x2		
8	124592	1	SWING BUSHING 114.84X125X		
9	136101	1	AXLE SUPPORT Rear (11623)		
10	358943	1	BRAKE CYLINDER LH		
11	125280	3	MAGNETIC PLUG M30X2		
12	141446	1	HEX HEAD SCREW		
13	28111	2	O-RING 119 5-243 15.08X2.		
14	642653	1	BEAM CENTRAL BODY		
15	358944	1	BRAKE CYLINDER RH (10755)		
16	21334	2	HEX SOCKET HEAD CAP SCREW		
17	21716	34	HEX SOCKET HEAD CAP SCREW DIN 912 M16X16		
18	21558	1	Plug M10x1		
19	128632	2	BELLEVILLE SPRING 90x46x2.5 lo5.7 / MOLL		
20	45166	2	KING PIN BUSH 45X62X22		
21	116962	2	BUSHING AB C 40X44X35 P		
22	126403	2	SEAL RING 40X60X18.5		
23	45160	2	SPHERICAL BALL INA-GE 35 SX V-418		
24	128631	2	BELLEVILLE SPRING 76x56.5x1 lo2.5 / MOLL		
25	132512	1	SWING BUSHING 120X130X42		



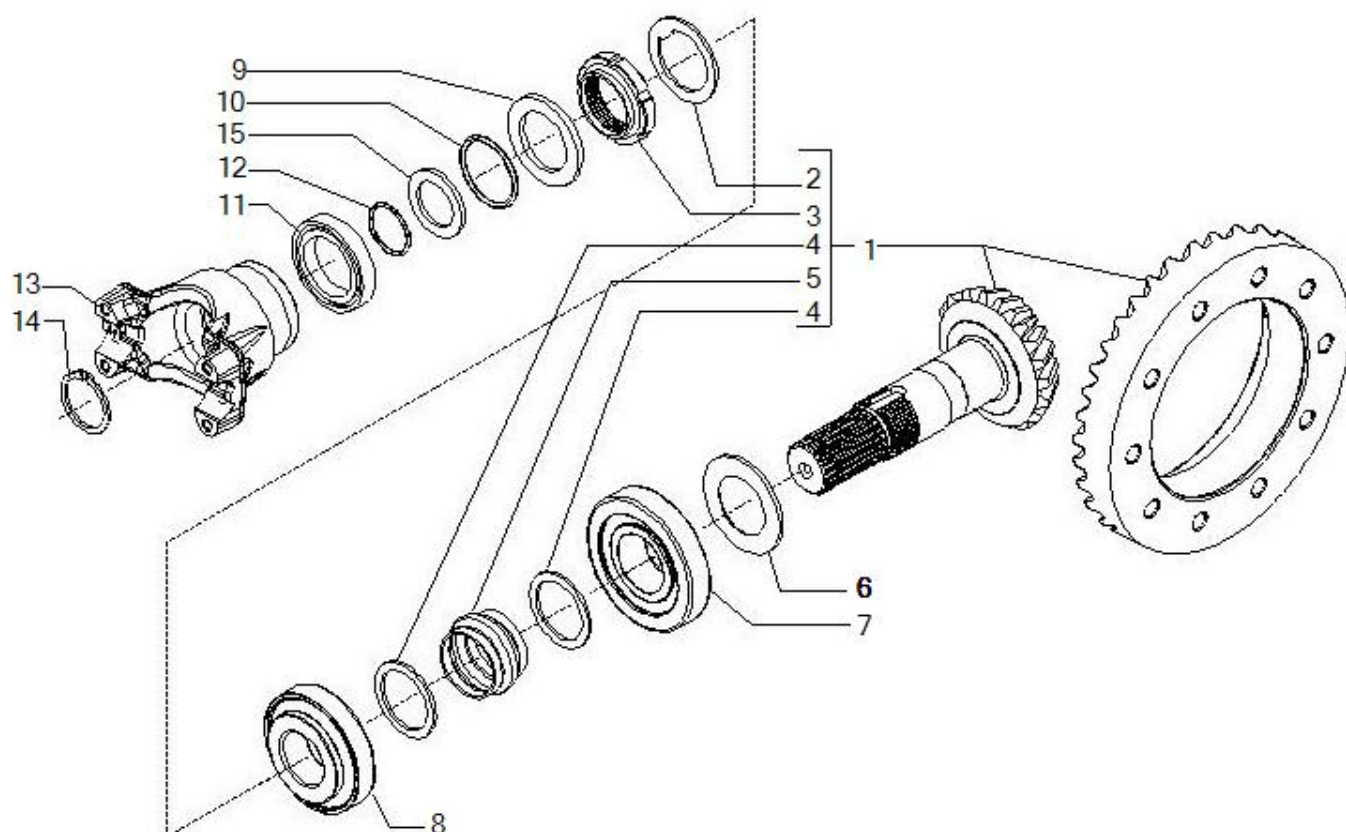
Pos	Ref	Qty	Description	Kit	Note
26	131762	1	SWING BUSHING 110X120X46		
27	150031	1	THRUST SHOE 154X110.5X5 / RALLA		
28	136102	1	AXLE SUPPORT Front (12126)		
29	116529	4	BUSH 30X21X16.5		
30	24258	2	LUBRIFICATING NIPPLES M8x1con.CH9 Acc.Zn		



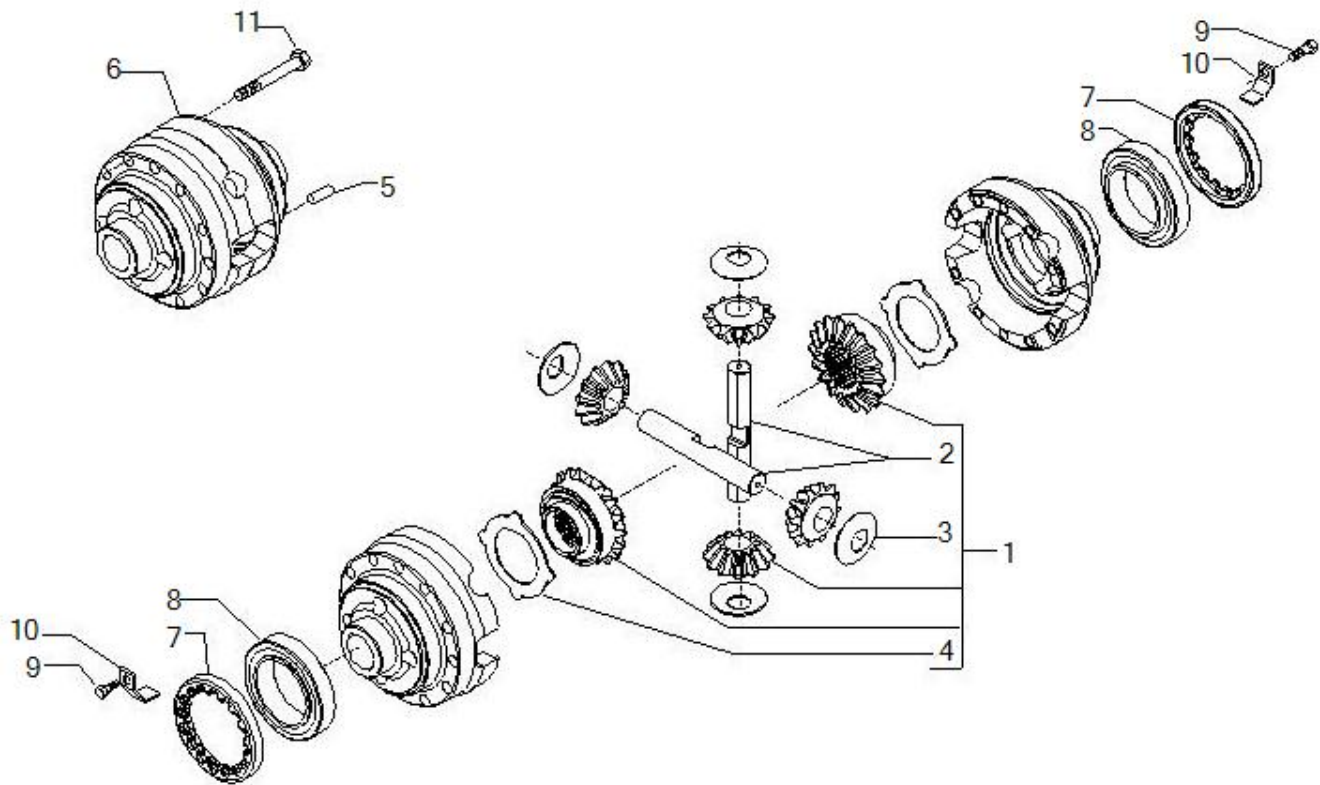
Pos	Ref	Qty	Description	Kit	Note
1	148009	2	STEERING ROD L471.5 D40		
2	351918	4	BALL JOINT		
3	352324	4	NUT M28 X 1.5 CAT.A		
4	352371	4	BALL JOINT TIE ROD RH D40		
5	339588	1	STEERING CYLINDER DE 100-50-230 S FE		
6	642049	1	SWIVEL HOUSING LH CA012316 SX 12316		
7	148040	2	DADO M27X1.5 AD INTAGLI		
8	135573	2	HEX HEAD SCREW M22X1.5X55 8.8		
9	137717	2	CENTERING BUSH MART.		
10	119906	2	SELF-LOCKING SCREW M14X1.5X65 10.9		
11	339592	2	CASSETTE RAD.SHAFT SEAL 48X75X/ 14/17		
12	125161	2	BUSHING 48X53X40		
13	48814	1	Rod		
14	48813	2	Cylinder head		
15	48812	1	Seal kit		
16	124748	4	HEX HEAD SCREW UNI 5739 M16X100 STEERING		
17	22129	4	HEXAGON NUT UNI 5589 M16 8		
18	25581	2	SPLIT PIN UNI 1336 5X50		
19	126923	16	SELF-LOCKING SCREW M16X2X38 10.9 ACCIAIO		
20	24210	4	LUBRIFICATING NIPPLES M6x1con.CH7 Acc.Zn		
21	130632	2	SWIVEL HOUSING KING PIN (
22	642048	1	SWIVEL HOUSING DX 12315		
23	130631	2	SWIVEL HOUSING KING PIN (
24	125240	4	BUSH 25X17 / BUSSOLA		
25	28400	2	Clamp		



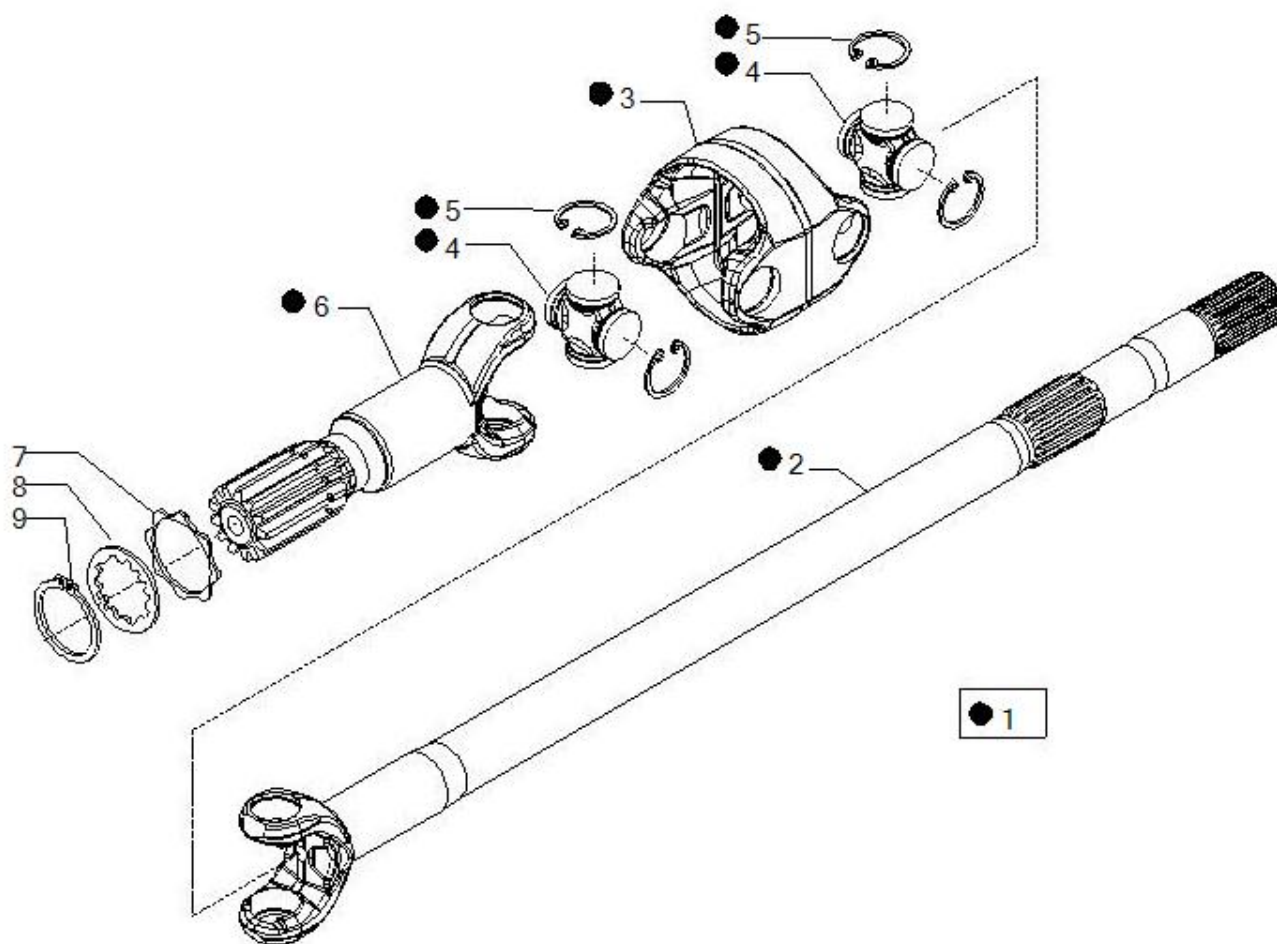
Pos	Ref	Qty	Description	Kit	Note
26	641449	1	CENTER DETECTION SWITCH		



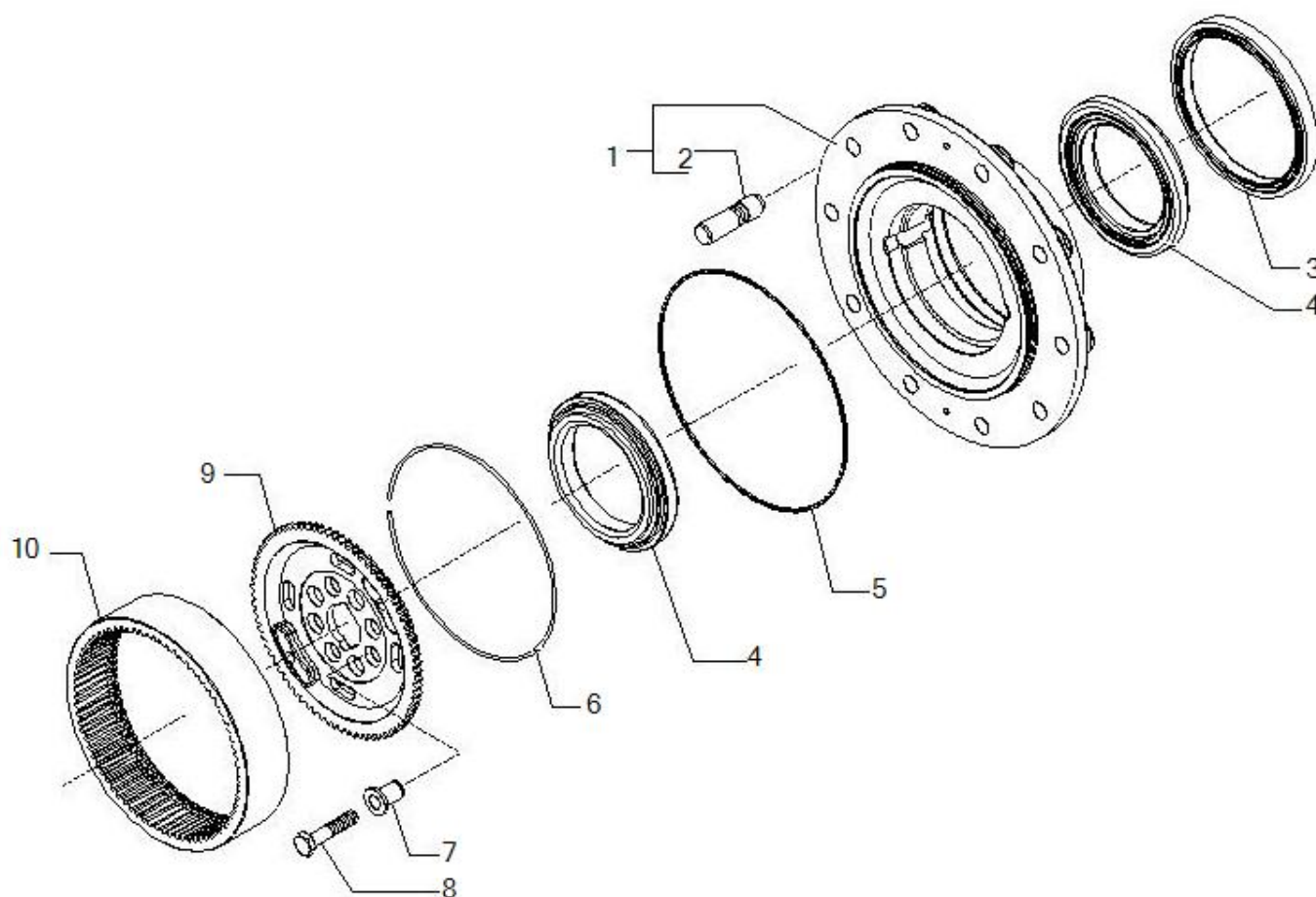
Pos	Ref	Qty	Description	Kit	Note
1	68307	1	COPPIA CONICA 11/32		
2	113717	1	WASHER 41X69X2 /RONDELLA FERMO GHIERA PI		
3	115054	1	RING NUT M40X1.5		
4	125829	2	THRUST SHOE 40.5X50X2 MAT		
5	138692	1	ELASTIC SPACER 45X42X15		
6	134186	1	SHIM 75X45.3X2.5		
6	134187	1	SHIM 75X45.3X2.6		
6	134188	1	SHIM 75X45.3X2.7		
6	134189	1	SHIM 75X45.3X2.8		
6	134190	1	SHIM 75X45.3X2.9		
6	134191	1	SHIM 75X45.3X3		
6	134192	1	SHIM 75X45.3X3.1		
6	134193	1	SHIM 75X45.3X3.2		
6	134194	1	SHIM 75X45.3X3.3		
6	134195	1	SHIM 75X45.3X3.4		
7	27351	1	Bearing		
8	27350	1	Bearing		
9	123402	1	WASHER C70 UNI 3545-68A NASTRO TEMPRATO		
10	28532	1	O-RING 3137 2-126 34.6X2.		
11	145050	1	CASSETTE RAD.SHAFT SEALX/		
12	28523	1	O.ring		
13	137959	1	PM FLANGE END YOKE 1410		
14	24789	1	Snap ring		
15	137517	1	SPACER 63X35X12.6		



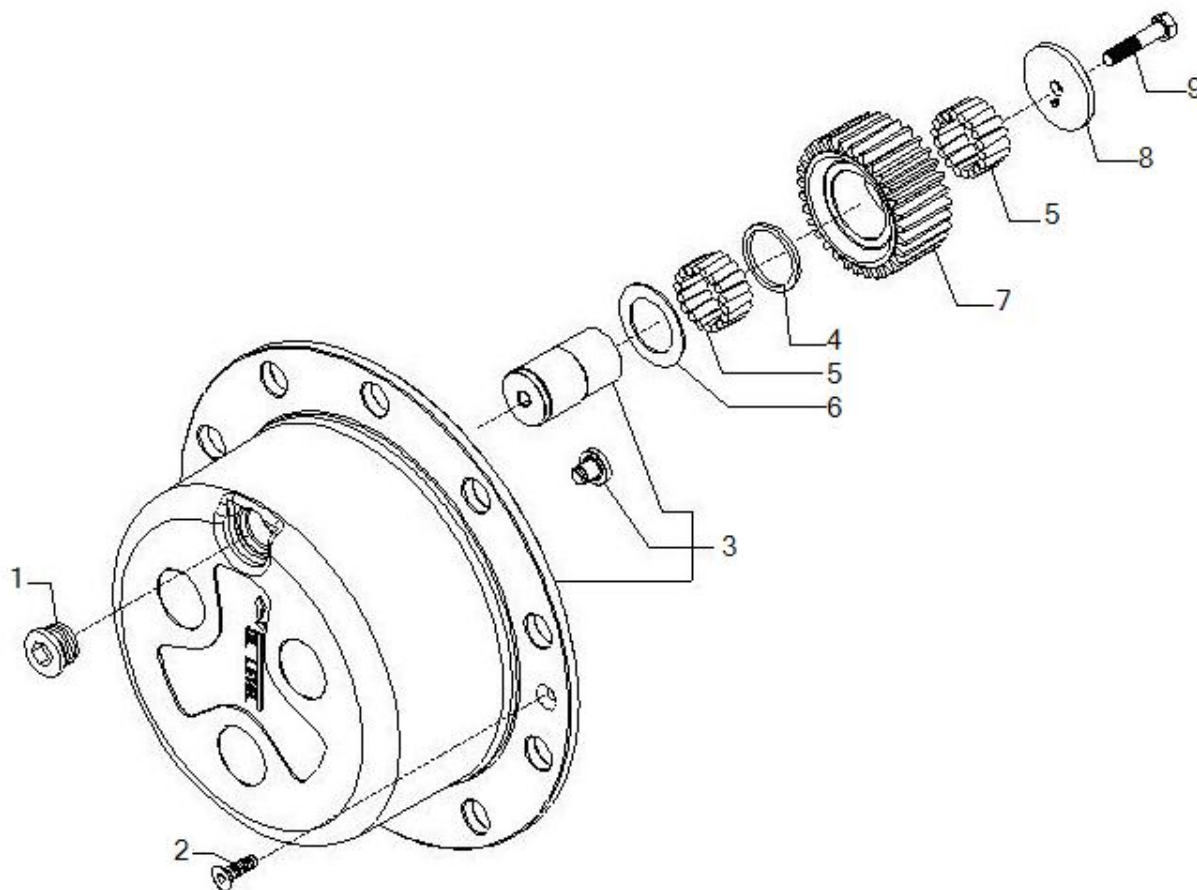
Pos	Ref	Qty	Description	Kit	Note
1	68902	1	DIFF. GEARS KIT		
2	133035	2	DIFF.PLANET.GEAR PIN		
3	117171	4	SPHERICAL WASHER 25.22X60		
4	133036	2	COUNTERPLATE		
5	117569	2	PARALLEL PIN		
6	117618	1	COMPLETE DIFF.HOUSING		
7	107400	2	RING NUT M94X2 (16988)		
8	27256	2	TAPE ROLLER THRUST BEARING 32011X 90X55X		
9	128440	2	SELF-LOCKING SCREW M6X10 10.9		
10	136156	2	RING NUT STOP		
11	125551	10	SELF-LOCKING SCREW M12X1.		



Pos	Ref	Qty	Description	Kit	Note
1	642032	2	DOUBLE U-JOINT B320 55 DFH L842 (GR230.4		
3	46220	4	Central body		
4	46221	8	SPIDER 0.110.018.0015		
6	45068	4	Fork (wheel side)		
7	140476	2	WASHER		
8	140023	2	WASHER 46.9X54.5X3		
9	24799	2	Snap ring		



Pos	Ref	Qty	Description	Kit	Note
1	68436	2	Wheel hub kit		
2	116957	40	STUD R22x2.5 - D22x1.5 - L80 - 10.9		
3	140368	2	CASSETTE RAD.SHAFT SEAL 165X195X/X16.5		
4	45182	4	TAPE ROLLER THRUST BEARIN		
5	28579	2	O.ring		
6	125233	2	CIRCLIP 238.9X16X3.5		
7	125190	16	CENTERING BUSH		
8	119906	16	SELF-LOCKING SCREW M14X1.5X65 10.9		
9	140376	2	EPIC. WHEEL CARRIER HUB (
10	139738	2	EPICYCLOIDAL RING GEAR Z77 M3 (13022)		



Pos	Ref	Qty	Description	Kit	Note
1	125280	2	MAGNETIC PLUG M30X2		
2	20490	4	COUNTERSUNK HEAD SCREW UN		
3	66570	2	PLANETARY CARRIER KIT		
4	138778	6	FIFTH WHEEL 52X45.2X2		
5	28301	372	NEEDLE 5x19.8 (TENS OF 117874)		
6	138689	6	FIFTH WHEEL 44.7X65X1.5		
7	138736	6	EPIC.PLANETARY GEAR Z31 M		
8	644650	6	THRUST SHOE 11X65X6 C67 UNI 7064-82		
9	125229	6	SELF-LOCKING SCREW M10X1.25X50 10.9		