



Spare parts catalogue

AXLE

REF: 140884

1.1 Axle housing

2.1 Bevel gear set

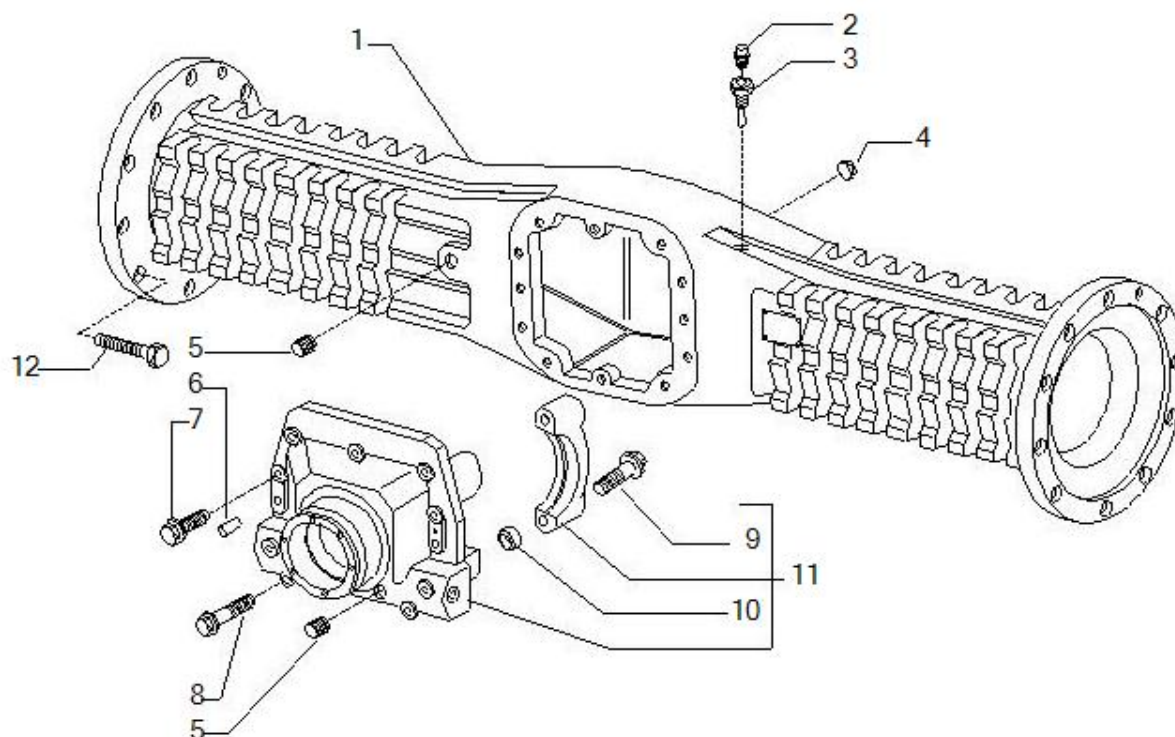
3.1 Differential

4.1 Differential locking

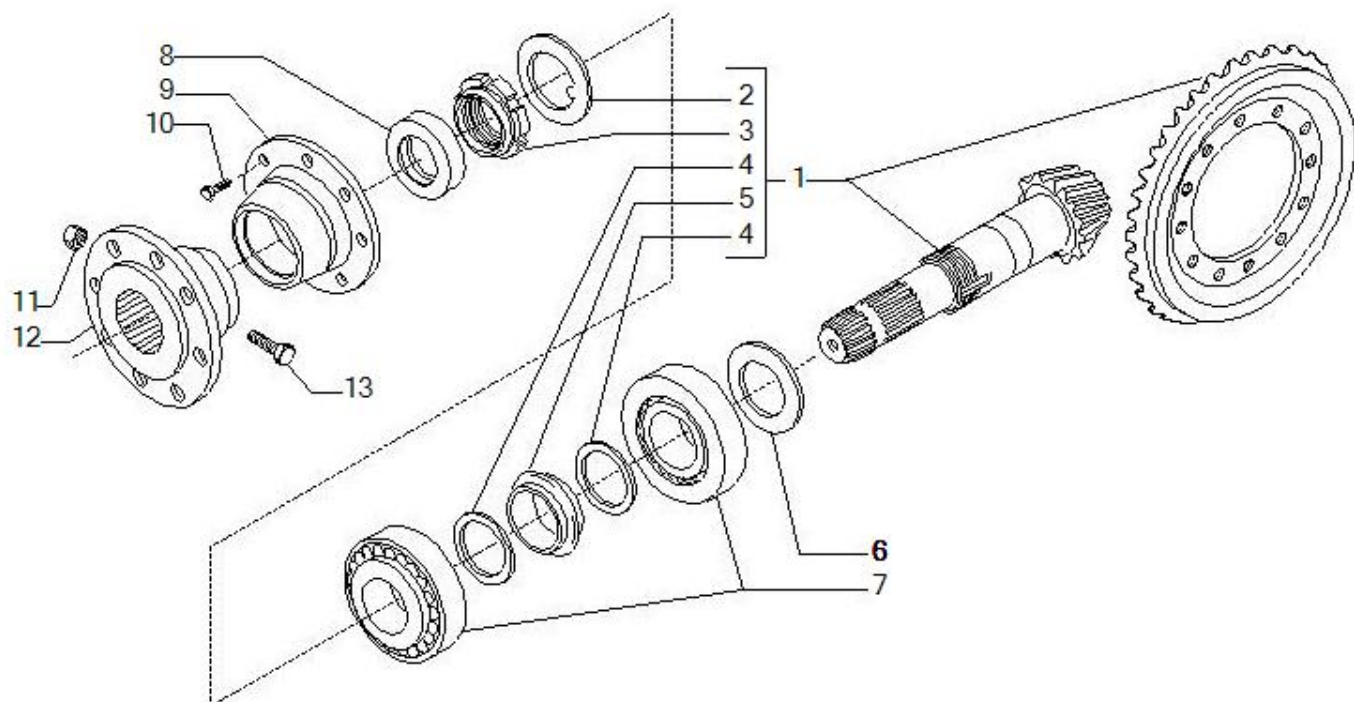
5.1 Wheel hub

6.1 Brakes

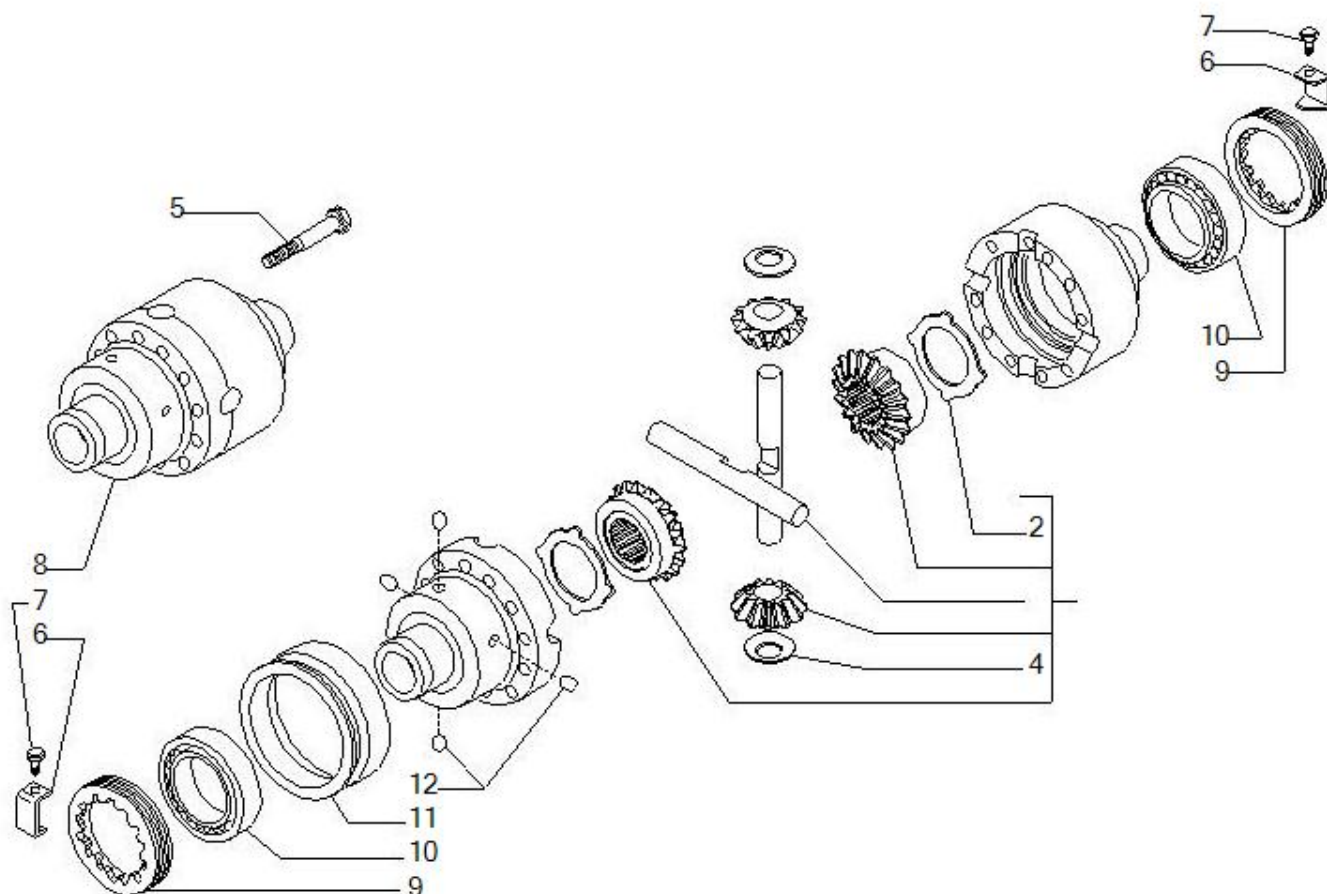
7.1 Final reduction



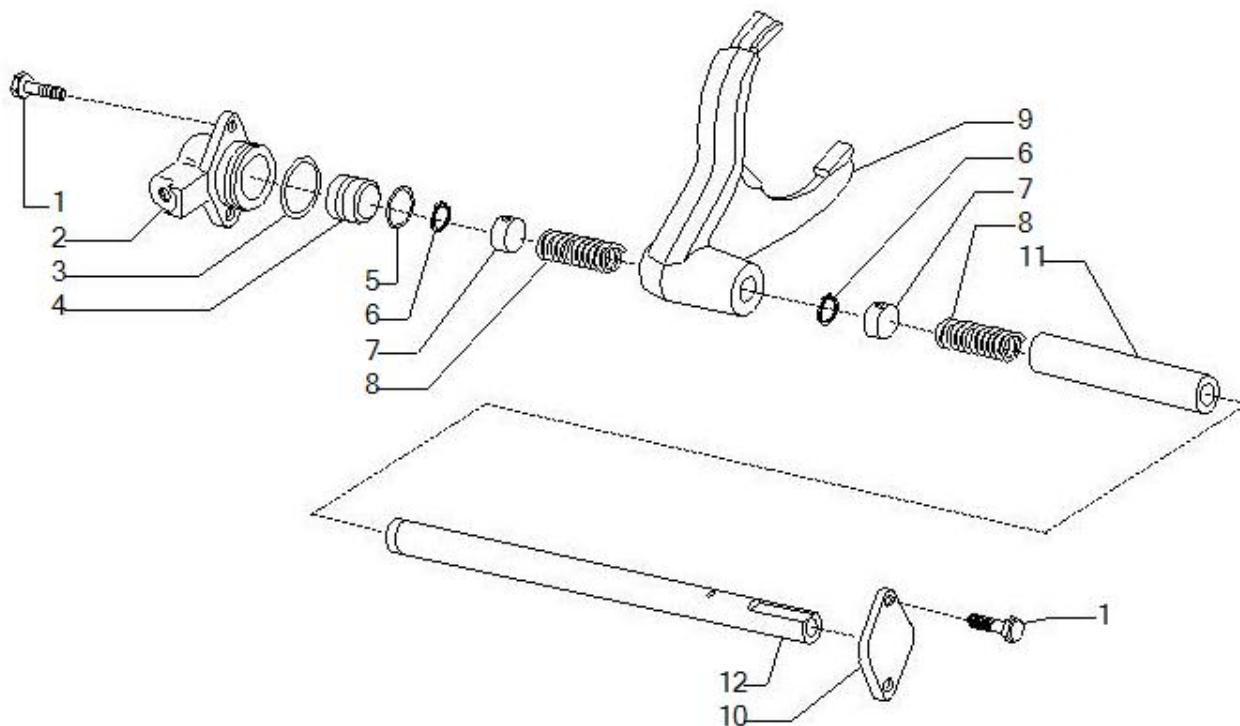
Pos	Ref	Qty	Description	Kit	Note
1	141299	1	BEAM (19061)		
2	104988	1	BREATHER M10X1		
3	121618	1	OIL VENT PIPE D		
4	21565	1	Plug M22x1.5		
5	92270	2	Oil plug M22x1,5		
6	87660	2	PARALLEL PIN 15X35		
7	125827	5	HEX HEAD FLANGE SCREW M12X1.75X29 12.9 C		
8	126334	5	HEX HEAD FLANGE SCREW		
9	126022	4	HEX HEAD FLANGE SCREW M14X2X75 12.9 GRIF		
10	72235	4	Centering bush		
11	126311	1	DIFF. SUPPORT (019140)		
12	127693	20	SELF-LOCKING SCREW M14X75 10.9		



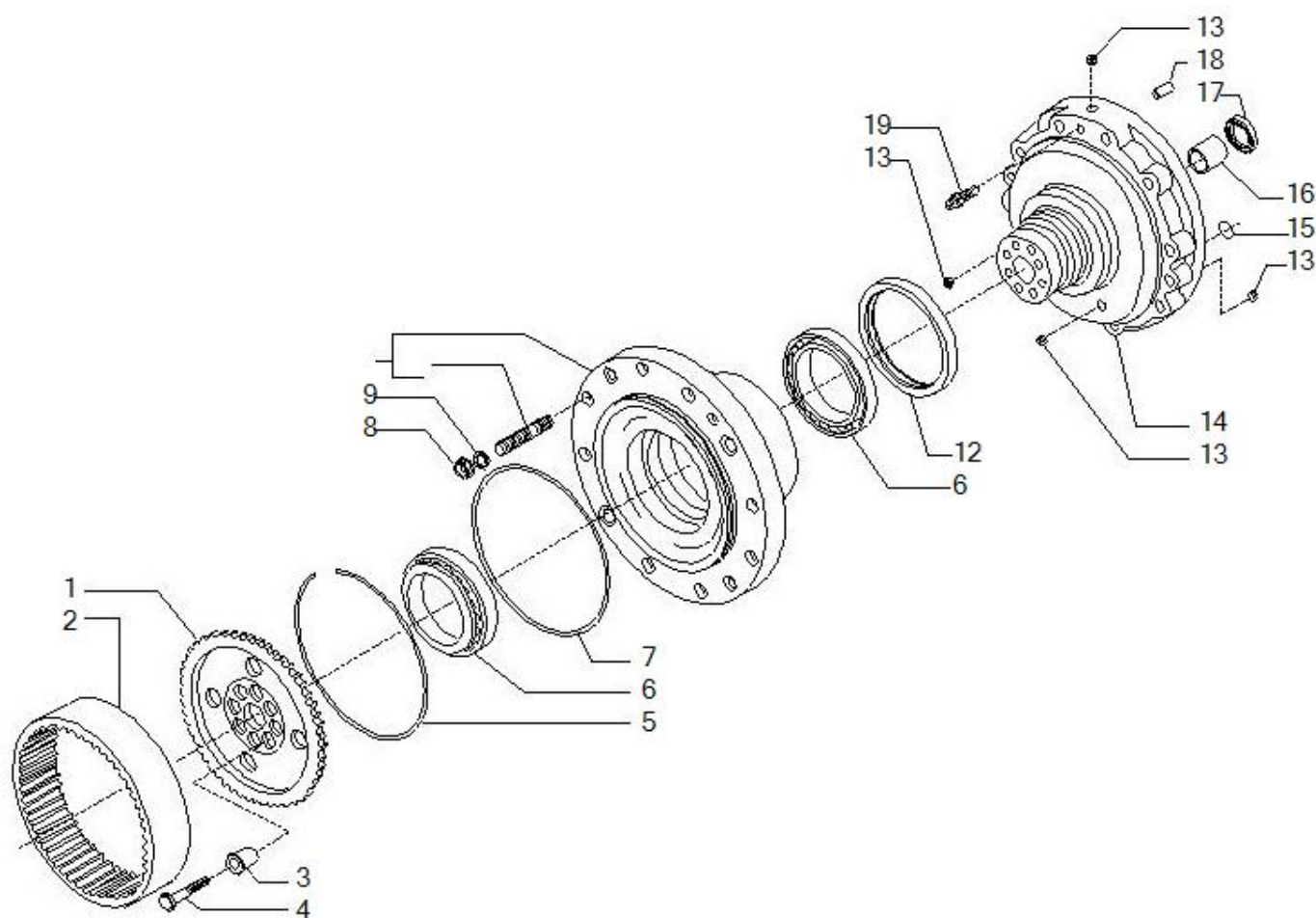
Pos	Ref	Qty	Description	Kit	Note
1	65528	1	Bevel gear set Z13/32		
2	113717	1	WASHER 41X69X2 /RONDELLA FERMO GHIERA PI		
3	115054	1	RING NUT M40X1.5		
4	125829	2	THRUST SHOE 40.5X50X2 MAT		
5	125806	1	ELASTIC SPACER 45X42X22.7		
6	132272	1	SHIM 63X40.3X3.2		
6	132265	1	SHIM 63X40.3X2.5		
6	132266	1	SHIM 63X40.3X2.6		
6	132267	1	SHIM 63X40.3X2.7		
6	132268	1	SHIM 63X40.3X2.8		
6	132269	1	SHIM 63X40.3X2.9		
6	132270	1	SHIM 63X40.3X3		
6	132271	1	SHIM 63X40.3X3.1		
6	132273	1	SHIM 63X40.3X3.3		
6	132274	1	SHIM 63X40.3X3.4		
7	27350	2	Bearing		
8	134363	1	SEAL RING 35X52X16 75 FKM SF6		
9	136868	1	FLANGE (018073)		
10	20746	6	Bolt M6x16		
11	22411	2	Nut M10x1.25		
12	117362	1	PM FLANGE DIN1410 (15983)		
13	21105	2	Bolt M10x60		



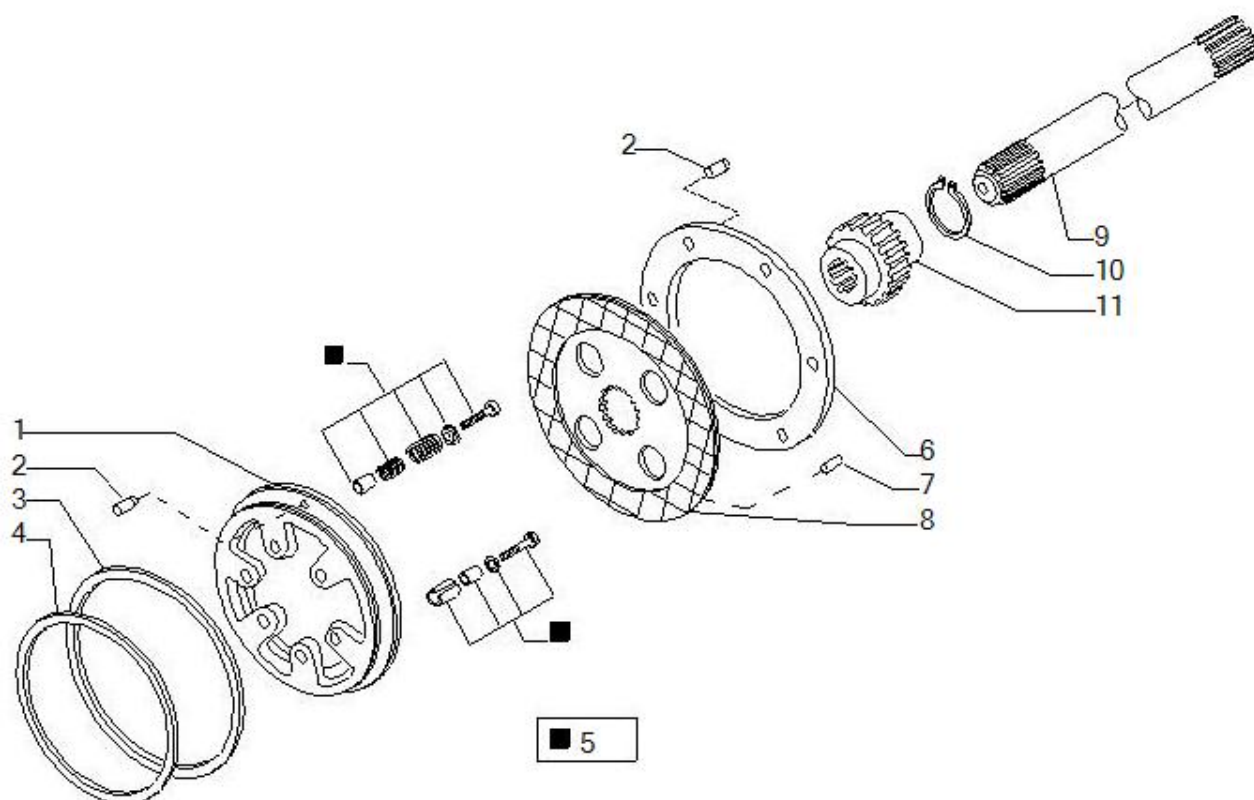
Pos	Ref	Qty	Description	Kit	Note
1	66189	1	DIFF. GEARS KIT		
2	120361	2	COUNTERPLATE Diff. locking SP. 1.5		
3	116369	2	DIFF.PLANET.GEAR PIN		
4	115730	4	SPHERICAL WASHER washer 22.1X42X1.5 -		
5	125552	12	HEX HEAD SCREW M10X1.5X75 12.9 ATB		
6	107778	2	RING NUT STOP		
7	128440	2	SELF-LOCKING SCREW M6X10 10.9		
8	134693	1	COMPLETE DIFF.HOUSING		
9	107400	2	RING NUT M94X2 (16988)		
10	27309	2	Bearing		
11	134691	1	SLIDING SLEEVE		
12	128955	4	RUNG D10X15.2		



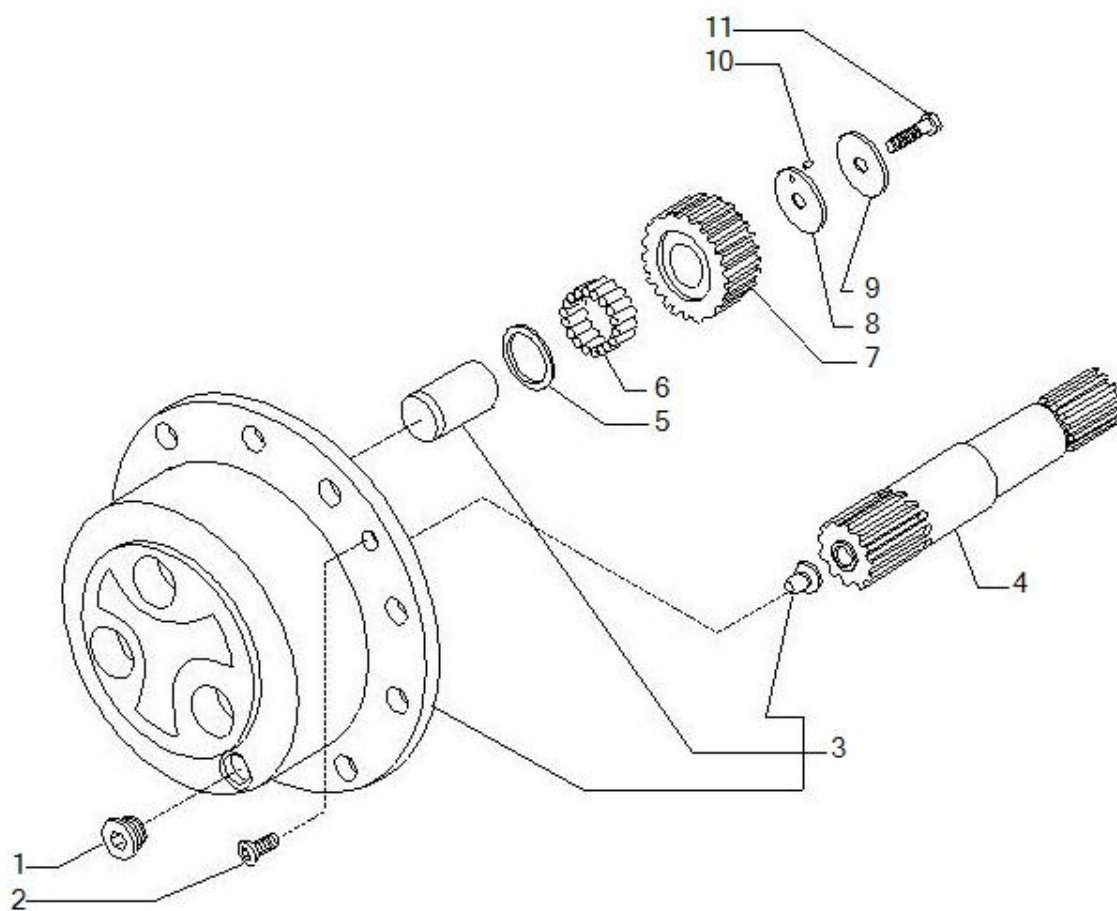
Pos	Ref	Qty	Description	Kit	Note
1	20778	4	Bolt M8x20		
2	126041	1	CILYNDER SUPPORT (019103)		
3	28557	1	O.ring		
4	126040	1	DIFFERENTIAL LOCKING PISTON		
5	28118	1	O.ring		
6	24765	2	Snap ring D12		
7	126038	2	SPACER		
8	126085	2	COMPRESSION SPRING		
9	126036	1	CONTROL FORK Diff. locking LH		
10	126042	1	FLANGE		
11	126039	1	BUSH 20X12.1X86 TUBO 20X4 Fe410-NBK UNI		
12	130988	1	CONTROL PIN		



Pos	Ref	Qty	Description	Kit	Note
1	139633	2	EPIC. WHEEL CARRIER HUB (13057)		
2	125186	2	EPICYCLOIDAL RING GEAR Z77 (16768)		
3	125190	16	CENTERING BUSH		
4	119906	16	SELF-LOCKING SCREW M14X1.5X65 10.9		
5	125233	2	CIRCLIP 238.9X16X3.5		
6	45180	4	TAPE ROLLER THRUST BEARING 158.75X109.53		
7	28579	2	O.ring		
8	119503	20	WHEEL NUT DIN 74361 M22X1.5 B		
9	119504	20	WASHER DIN 74361 22.5 C		
10	68056	2	WHEEL HUB KIT		
11	116957	20	STUD R22x2.5 - D22x1.5 - L80 - 10.9		
12	47702	2	Seal ring		
13	21558	8	Plug M10x1		
14	138776	2	WHEEL SHAFT (018608)		
15	28576	4	O-Ring		
16	109972	2	BUSHING 35X39X35		
17	25351	2	Oil seal 35x52x7		
18	76379	4	PARALLEL PIN 15X45 / SPINA		
19	121333	2	BREATHER		



Pos	Ref	Qty	Description	Kit	Note
1	141046	2	PISTONE FRENO 19054		
2	120132	12	PARALLEL PIN 8X23.5		
3	120208	2	QUAD-RING		
4	120209	2	QUAD-RING		
5	66710	2	Kit self-adjust		
6	125584	2	COUNTERPLATE		
7	24466	2	Split pin 6x16		
8	119682	2	BRAKE DISC		
9	130287	2	AXLE SHAFT		
10	24874	2	Snap ring D33		
11	130289	2	BRAKE DISC TOW HUB		



Pos	Ref	Qty	Description	Kit	Note
1	125280	2	MAGNETIC PLUG M30X2		
2	20490	4	COUNTERSUNK HEAD SCREW UN		
3	66055	2	Wheel carrier assy		
4	137130	2	AXLE SHAFT WITH GEAR z=13 m=3		
5	128731	6	FIFTH WHEEL 40X60X1.5		
6	28297	16.80	NEEDLE 5x29.8 (TENS OF 125227)		
7	128714	6	EPIC.PLANETARY GEAR Z31		
8	125134	6	WASHER 11X60X3		
9	132319	6	WASHER 11X60X3		
10	28370	0.60	CYLINDRICAL ROLLER 5x10 (TENS OF 134350)		
11	125229	6	SELF-LOCKING SCREW M10X1.25X50 10.9		