



SPICER®
Off-Highway Products

Service Parts List

Transmission
R33425-5
4266886

TPL-2813
September 2016



SPICER OFF-HIGHWAY PRODUCTS DIVISION

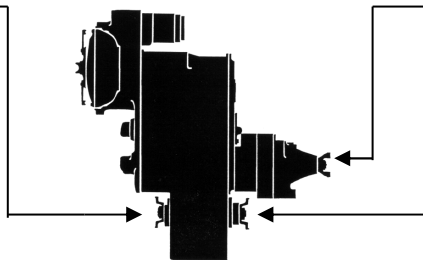
MODEL NO. R33425-5

PART NO. 4266886

DATE 31/08/2016

FRONT OUTPUT FLANGE

FLANGE 251723
NUT 248857
WASHER 231916
O-RING 25K60128



P.T.O. FLANGE

FLANGE
NUT
WASHER
O-RING

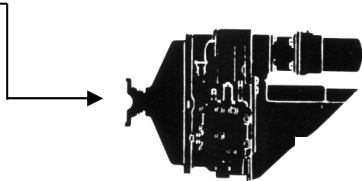
REAR OUTPUT FLANGE

FLANGE 251723
NUT 248857
WASHER 231916
O-RING 25K60128

HRS-32000
HRS-33000
HR33000

INPUT FLANGE

FLANGE 4214143
NUT 249817
WASHER 222179
O-RING 60K60116



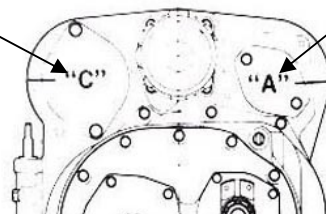
MHR-33000

C

PUMP DRIVE ASS'Y
(includes the following)
SNAP RING (INNER)

SNAP RING (OUTER)

CHARGING PUMP



A

PUMP DRIVE ASS'Y
(includes the following)
SNAP RING (INNER)

SNAP RING (OUTER)

PUMP DRIVE SLEEVE POSITION

HRS - 000 (REV. 08/02)

Date : 30-AUG-16
Revised :
MODEL : 4266886

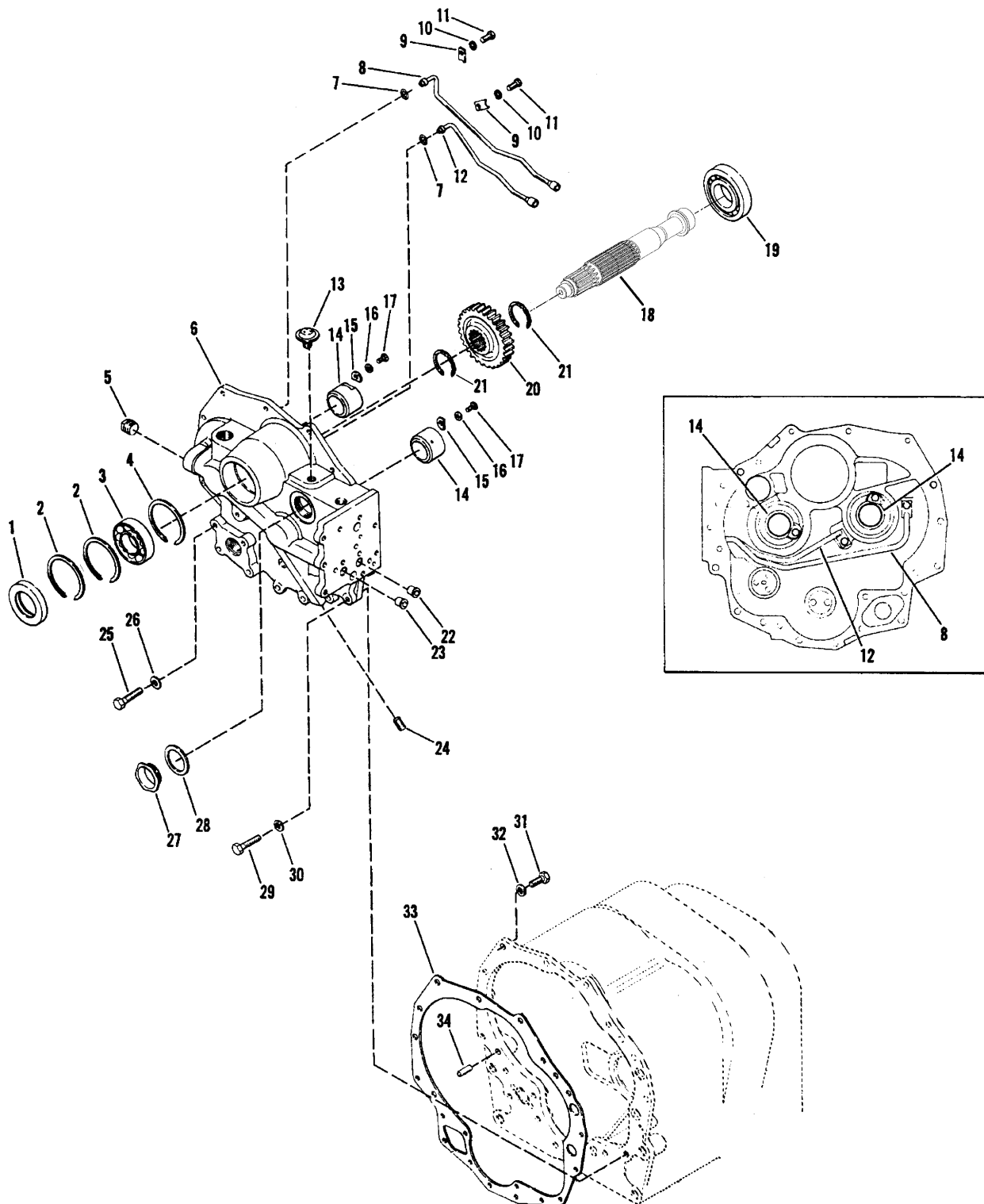
R33425-5
ASSEMBLY-TRANSMISSION FOR TAMROCK

<u>Item</u>	<u>Qty</u>	<u>Part Number</u>	<u>Description</u>
1	1	250195	GEAR-OUTPUT 55T SEE ITEM 30 OF GROUP-OUTPUT SHAFT
2	1	248022	GASKET-MODULATOR VALVE SEE ITEM 13 OF ASSY-MODULATOR VALVE
3	1	250185	GEAR-INPUT 37T SEE ITEM 20 OF GROUP-INPUT SHAFT & FRONT COVER

N.S.S. - Not Sold Separately
N.I. - Not Illustrated

33000

GROUP-INPUT SHAFT AND FRONT COVER



GRP33059

Date : 30-AUG-16
Revised : D
MODEL : 925106

32/33000

GROUP-INPUT SHAFT & FRONT COVER

<u>Item</u>	<u>Qty</u>	<u>Part Number</u>	<u>Description</u>
1	1	230839	OIL SEAL
2	2	214953	SNAP RING
3	1	4222485	BEARING
4	1	214953	SNAP RING
5	2	239244	PLUG
6	1	250868	ASSY-FRONT COVER & TUBE Including items 7 thru 12,14 thru 17,22,23
7	2	60K30012	O RING
8	1	250647	ASSY-TUBE 2ND GR PRESS
9	2	231048	TUBE CLIP
10	2	11EM80	LOCKWASHER
11	2	7CM816	CAPSCREW
12	1	250646	ASSY-TUBE REVERSE PRESS
13	1	238535	AIR-BREATHER
14	2	248694	SLEEVE-OIL DISTRIBUTOR
15	2	230851	WASHER
16	2	11EM80	LOCKWASHER
17	2	7CM816	CAPSCREW
18	1	252051	TURBINE-SHAFT
19	1	4214627	BEARING-ROLLER
20			GEAR-INPUT SHAFT - SEE FRONT PAGE
21	2	224065	SNAP RING
22	1	222067	SLEEVE-PRESSURE & LUBRICATION TUBE
23	1	222067	SLEEVE-PRESSURE & LUBRICATION TUBE
24	1	24K6	FITTING-PLUG - INCLUDING ITEM 24A

N.S.S. - Not Sold Separately
N.I. - Not Illustrated

Date : 30-AUG-16
Revised : D
MODEL : 925106

32/33000

GROUP-INPUT SHAFT & FRONT COVER

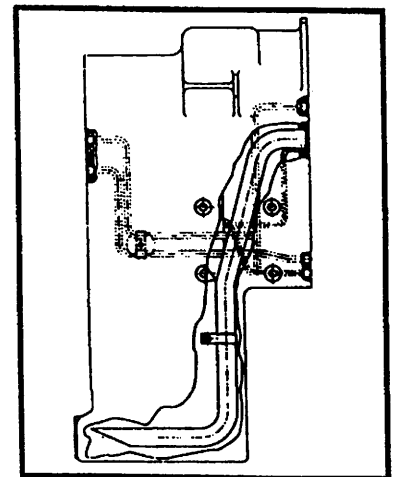
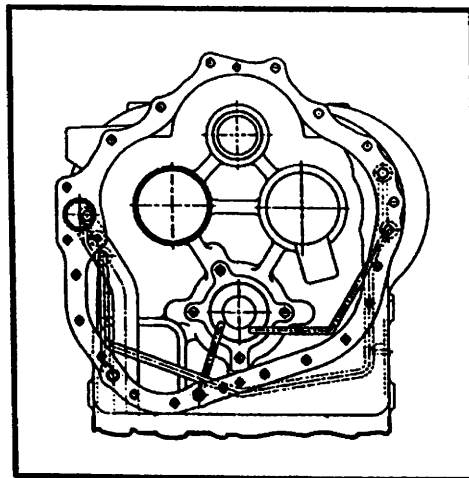
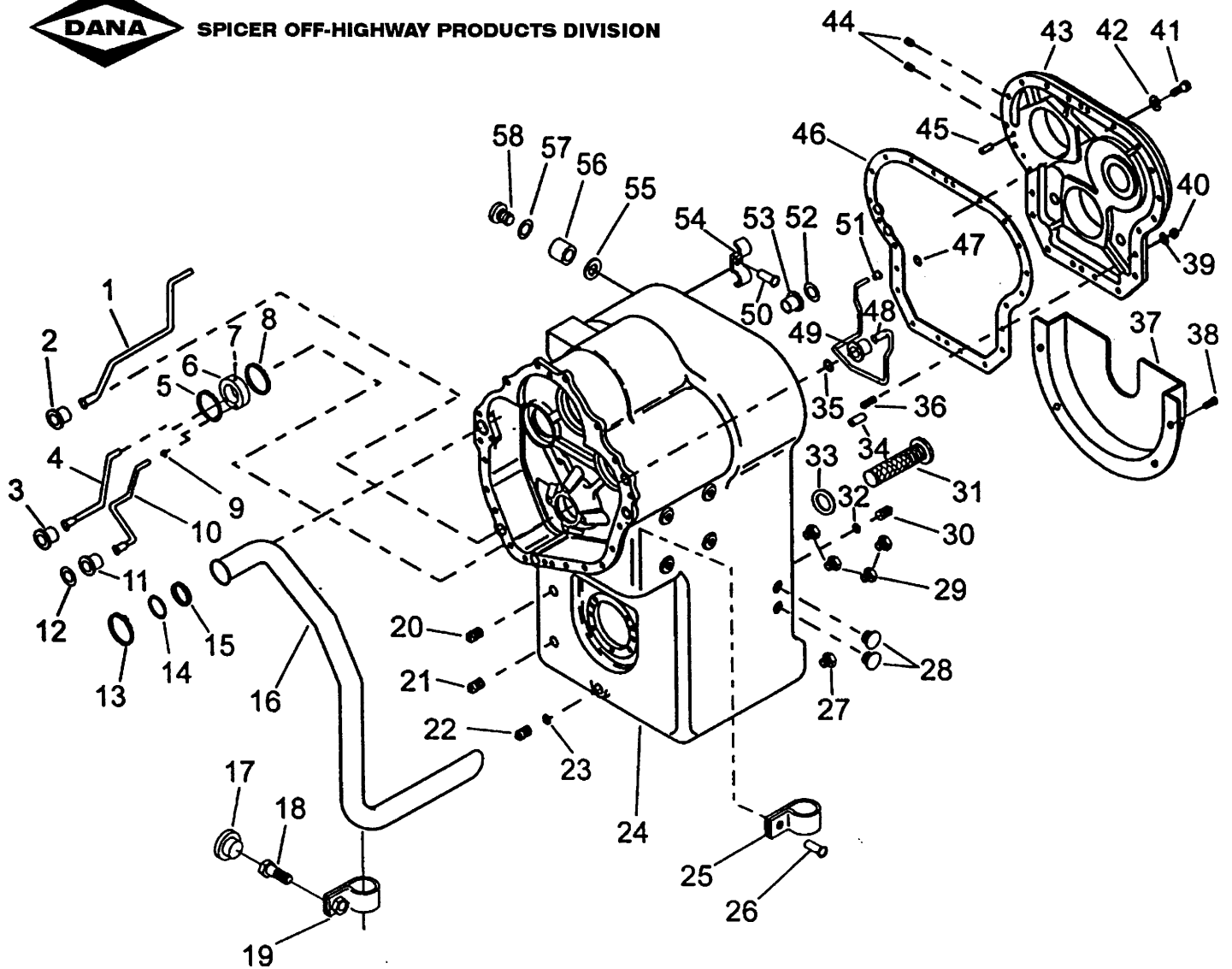
<u>Item</u>	<u>Qty</u>	<u>Part Number</u>	<u>Description</u>	
24A	1	91F6	O RING - PART OF ITEM 24	
25	3	7CM1245	CAPSCREW	
26	3	18EM1224	WASHER-PLAIN	
27	2	4204249	PLUG	
28	2	219373	GASKET	
29	7	7CM1235	CAPSCREW	
30	7	18EM1224	WASHER-PLAIN	
31	11	7CM1245	CAPSCREW	
32	11	18EM1224	WASHER-PLAIN	
33	1	249731	GASKET-CONV TRANS HOUSING	
34	2	214295	DOWEL PIN	
	1	19F8	BUSHING-PIPE REDUCING	N.I.
	1	24K7	FITTING-PLUG - INCLUDING ITEM 36A	N.I.
A	1	91F7	O RING - PART OF ITEM 36	N.I.

N.S.S. - Not Sold Separately
N.I. - Not Illustrated

GROUP-TRANSMISSION CASE



SPICER OFF-HIGHWAY PRODUCTS DIVISION



GRP33001

Date : 30-AUG-16
Revised : K
MODEL : 269103

T33000
GROUP-TRANSMISSION CASE

<u>Item</u>	<u>Qty</u>	<u>Part Number</u>	<u>Description</u>
1	1	249499	TUBE-LOW LUBE
2	1	222067	SLEEVE-PRESSURE & LUBRICATION TUBE
3	1	222067	SLEEVE-PRESSURE & LUBRICATION TUBE
4	1	248715	TUBE-3RD LUBE
5	1	223901	SNAP RING
6	1	235314	ASSY-OIL DISTRIBUTOR & PLUG
7	1	10J8	BALL
8	1	223901	SNAP RING
9	1	76K12	O RING
10	1	249735	STATESVILLE PARTS
11	1	222067	SLEEVE-PRESSURE & LUBRICATION TUBE
12	1	60K40026	O RING
13	1	7JM48	SNAP RING-INTERNAL
14	1	4201803	WASHER
15	1	60K60116	O-RING
16	1	249730	TUBE-SUCTION
17	1	239245	PLUG
18	1	3GM625	SCREW
19	1	4201804	ASSY-SUCTION TUBE BRACKET
20	1	11F16	PIPE PLUG
21	1	11F16	PIPE PLUG
22	1	1KM18	PLUG-SCREW TYPE
23	1	60K20020	O RING
24	1	250121	ASSEMBLY-TRANS CASE AND TUBE Including items 1 thru 11,13 thru 19,25,26,

N.S.S. - Not Sold Separately
N.I. - Not Illustrated

Date : 30-AUG-16
Revised : K
MODEL : 269103

T33000
GROUP-TRANSMISSION CASE

<u>Item</u>	<u>Qty</u>	<u>Part Number</u>	<u>Description</u>
48 thru 51, 53 & 54			
25	1	6H12	CLIP
26	1	249894	RIVET
27	1	11F16	PIPE PLUG
28	2	40K4	PIPE PLUG
29	4	16F4	PIPE PLUG
30	1	250425	PLUG-MAGNETIC DRAIN
31	1	248717	ASSEMBLY-SUCTION SCREEN
32	1	60K20020	O RING
33	1	243712	GASKET-SCREEN ASSEMBLY
34	1	214295	DOWEL PIN
35	1	60K40026	O RING
36	4	248764	STUD-COVER/CASE M12 X 35
37	1	249741	ASSY-BAFFLE
38	4	3GM625	SCREW
39	4	18EM1224	WASHER-PLAIN
40	4	4DM12	NUT
41	17	7CM1240	SCREW-M12 X 40
42	17	18EM1224	WASHER-PLAIN
43	1	250162	COVER-REAR
44	2	239244	PLUG
45	1	214295	DOWEL PIN
46	1	248737	GASKET-REAR COVER
47	1	60K40026	O RING
48	1	249734	TUBE-LOW PRESSURE

N.S.S. - Not Sold Separately
N.I. - Not Illustrated

Date : 30-AUG-16
Revised : K
MODEL : 269103

T33000
GROUP-TRANSMISSION CASE

<u>Item</u>	<u>Qty</u>	<u>Part Number</u>	<u>Description</u>
49	1	222067	SLEEVE-PRESSURE & LUBRICATION TUBE
50	1	249894	RIVET
51	1	222067	SLEEVE-PRESSURE & LUBRICATION TUBE
52	1	60K40026	O RING
53	1	222067	SLEEVE-PRESSURE & LUBRICATION TUBE
54	1	248732	CLIP-LOW PRESSURE TUBE
55	AR	248167	WASHER-SHIM
56	1	248166	BUSHING-SENSOR
57	1	60K20020	O RING
58	1	1KM18	PLUG-SCREW TYPE

N.S.S. - Not Sold Separately
N.I. - Not Illustrated

Date : 30-AUG-16
Revised : A
MODEL : 269425

32000

GROUP-FORWARD & REVERSE SHAFT GEAR

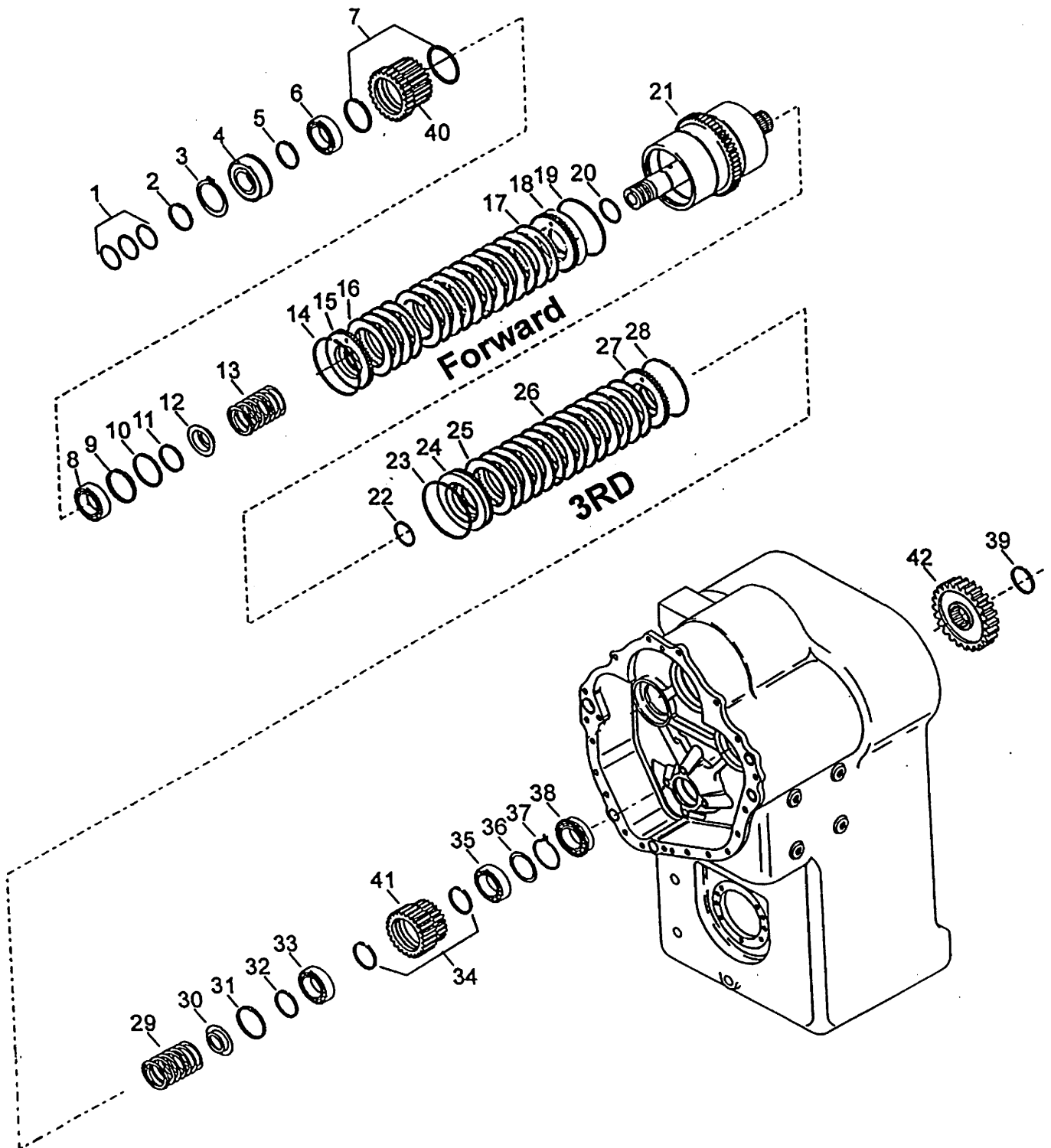
<u>Item</u>	<u>Qty</u>	<u>Part Number</u>	<u>Description</u>	
1	1	250821	GEAR-CLUTCH DRIVEN	32T
		SEE ITEM 41	OF GROUP-REV & 2ND SHAFT	
2	1	250187	GEAR-3RD CLUTCH DRIVE	76T
		SEE ITEM 41	OF GROUP-FWD & 3RD SHAFT	
3	1	250188	GEAR-2ND CLUTCH DRIVEN	44T
		SEE ITEM 39	OF GROUP-REV & 2ND SHAFT	
4	1	250821	GEAR-CLUTCH DRIVEN	32T
		SEE ITEM 40	OF GROUP-FWD/3RD SHAFT	
5	1	248647	GEAR-LOW CLUTCH DRIVE	43T
		SEE ITEM 42	OF GROUP-FWD/3RD SHAFT	

N.S.S. - Not Sold Separately
N.I. - Not Illustrated

GROUP-FWD LOW/3RD SHAFT



SPICER OFF-HIGHWAY PRODUCTS DIVISION



GRP33031

Date : 30-AUG-16
 Revised :
 MODEL : 4508568

33000
 GROUP-FWD LOW / 3RD SHAFT

<u>Item</u>	<u>Qty</u>	<u>Part Number</u>	<u>Description</u>	
1	3	4212062	RING-PISTON CAST IRON	
2	1	4209528	RING-RETAINING	
3	1	248701	SNAP RING-FRONT BRG RET (DENCE)	
4	1	248745	BEARING-FWD/3RD SHAFT FRONT 6311N	
5A	AR	250738	RING-FWD DRIVEN GEAR BRG ADJ .113/.110	
5B	AR	250739	RING-FWD DRIVEN GEAR BRG ADJ .108/.105	
5C	AR	250740	RING-FWD DRIVEN GEAR BRG ADJ .103/.100	
5D	AR	250741	RING-FWD DRIVEN GEAR BRG ADJ .098/.095	
5E	AR	250742	RING-FWD DRIVEN GEAR BRG ADJ .093/.090	
5F	AR	4209528	RING-RETAINING	
6B	1	1320904	CONE-FWD DRIVEN GEAR BRG	JLM506849
6A	1	1320905	CUP-FWD DRIVEN GEAR BRG	JLM506810
7	2	250115	SNAP RING-FWD DRIVEN GEAR BRG LOCATING	
8B	1	1320904	CONE-FWD DRIVEN GEAR BRG	JLM506849
8A	1	1320905	CUP-FWD DRIVEN GEAR BRG	JLM506810
9	1	247488	SNAP RING-SPRING	FWD
10	1	250817	ASSY-FWD LOW & 3RD SHAFT ,HUB DRUM & PLUG	
10			Not Used On This Model	
11			Not Used On This Model	
12	1	250829	RETAINER-WAVE SPRING	FWD
A	1	245655	RETAINER-WAVE SPRING	N.I.
13	1	4209248	SPRING-WAVE	
14	1	243636	SNAP RING-BACKING PLATE	FWD
15	1	247276	PLATE-CL DISC BACKING	FWD
16	9	247273	PLATE-CL DISC OUTER	FWD

N.S.S. - Not Sold Separately
 N.I. - Not Illustrated

Date : 30-AUG-16
Revised :
MODEL : 4508568

33000
GROUP-FWD LOW / 3RD SHAFT

<u>Item</u>	<u>Qty</u>	<u>Part Number</u>	<u>Description</u>		
17	9	251704	DISC-INNER CLUTCH		
18	1	4216847	ASSY-CLUTCH PISTON AND SEALS INCLUDING ITEMS 19 & 20		
19	1	4212127	SEAL-CLUTCH PISTON OUTER - PART OF ITEM 18		
20	1	248768	SEAL-CLUTCH PISTON INNER - PART OF ITEM 18		
22	1	230857	SEAL-CLUTCH PISTON INNER - PART OF ITEM 24		
23	1	4212127	SEAL-CLUTCH PISTON OUTER - PART OF ITEM 24		
24	1	4213593	ASSY-CLUTCH PISTON ALU-INCL.ITEMS 22 & 23		
25	7	224772	DISC-CLUTCH, OUTER	3RD CLUTCH	
26	7	251560	DISC CLUTCH, INNER	3RD CLUTCH	
27	1	245205	PLATE-CL. DISC BACKING	3RD CLUTCH	
28	1	215190	SNAP RING-BACKING PLATE	3RD CLUTCH	
A	1	4222695	RETAINER-SPRING	3RD CLUTCH	N.I.
29	1	4222611	SPRING-HELICAL	3RD CLUTCH	
30	1	4222696	RETAINER-SPRING	3RD CLUTCH	
31	1	230888	SNAP RING-SPRING RETAINER	3RD CLUTCH	
32			Not Used On This Model		
33	1	244093	BEARING-CL DRIVEN GEAR FRONT	3RD CLUTCH	
34	2	7JM90	SNAP RING		
35	1	244242	BEARING-CL DRIVEN GEAR, REAR	3RD CLUTCH	
36	1	247465	SNAP RING		
37	1	234229	SNAP RING-REAR BRG RETAINING (DENCE)		
38	1	248746	BEARING-FWD LOW/3RD SHAFT REAR	MU1310	
39	1	224026	RING-GEAR RETAINING, LOW CL DRIVER		
40			FORW CL DRIVEN GEAR-SEE SPECIAL PART SECTION		

N.S.S. - Not Sold Separately
N.I. - Not Illustrated

Date : 30-AUG-16
Revised :
MODEL : 4508568

33000
GROUP-FWD LOW / 3RD SHAFT

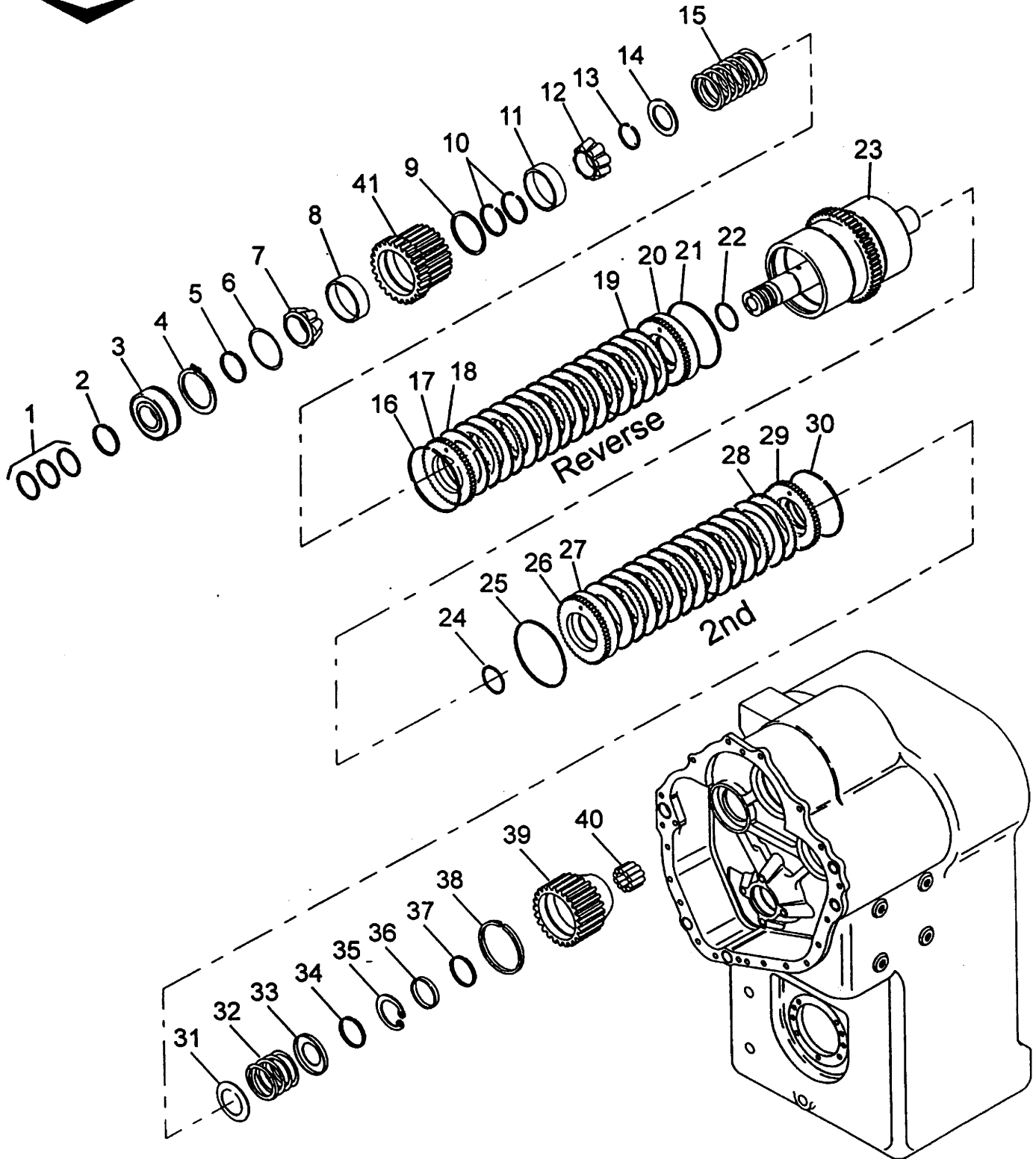
<u>Item</u>	<u>Qty</u>	<u>Part Number</u>	<u>Description</u>	
41			3RD CL DRIVEN GEAR-SEE SPECIAL PART SECTION	
42			LOW CL DRIVEN GEAR-SEE SPECIAL PART SECTION	
A	1	243997	RING-CLUTCH HUB OIL BAFFLE	N.I.
A	1	243997	RING-CLUTCH HUB OIL BAFFLE	N.I.

N.S.S. - Not Sold Separately
N.I. - Not Illustrated

GROUP- REV AND 2ND SHAFT



SPICER OFF-HIGHWAY PRODUCTS DIVISION



GRP33041

Date : 30-AUG-16
Revised :
MODEL : 4508567

33000
GROUP-REV 2ND SHAFT

<u>Item</u>	<u>Qty</u>	<u>Part Number</u>	<u>Description</u>
1	3	4212062	RING-PISTON CAST IRON
2	1	4209528	RING-RETAINING
3	1	248745	BEARING-REV & 2ND SHAFT FRONT 6311N
4	1	248701	SNAP RING-FRONT BEARING RET (DENCE)
5A	AR	250738	RING-REV DRIVEN GEAR BRG ADJ .113/.110
5B	AR	250739	RING-REV DRIVEN GEAR BRG ADJ .108/.105
5C	AR	250740	RING-REV DRIVEN GEAR BRG ADJ .103/.100
5D	AR	250741	RING-REV DRIVEN GEAR BRG ADJ .098/.095
5E	AR	250742	RING-REV DRIVEN GEAR BRG ADJ .093/.090
5F	AR	4209528	RING-RETAINING
6			Not Used On This Model
7	1	1320904	CONE-REV DRIVEN GEAR BRG JLM506849
8	1	1320905	CUP-REV DRIVEN GEAR BRG JLM506810
9	1	243997	RING-CLUTCH HUB OIL BAFFLE
10	2	250115	SNAP RING-REV DRIVEN GEAR BRG LOCATING
11	1	1320905	CUP-REV DRIVEN GEAR BRG JLM506810
12	1	1320904	CONE-REV DRIVEN GEAR BRG JLM506849
13	1	247488	SNAP RING-SPRING REV CLUTCH
14	1	250829	RETAINER-WAVE SPRING
15	1	4209248	SPRING-WAVE
16	1	243636	SNAP RING-BKG PLTE REV CLUTCH
17	1	247276	PLATE-CLUTCH DISC BACKING REV CLUTCH
18	9	247273	PLATE-DISC-CLUTCH OUTER REV CLUTCH
19	9	251704	DISC-INNER CLUTCH
20	1	4216847	ASSY-CLUTCH PISTON AND SEALS

N.S.S. - Not Sold Separately
N.I. - Not Illustrated

Date : 30-AUG-16
Revised :
MODEL : 4508567

33000
GROUP-REV 2ND SHAFT

<u>Item</u>	<u>Qty</u>	<u>Part Number</u>	<u>Description</u>
		INCLUDING ITEMS 21 & 22	
21	1	4212127	SEAL-CLUTCH PISTON OUTER - PART OF ITEM 20
22	1	248768	SEAL-CLUTCH PISTON INNER - PART OF ITEM 20
23	1	250830	ASSY-REV & 2ND SHAFT HUB, DRUM & PLUG
24	1	4213593	ASSEMBLY-CLUTCH PISTON ALU
		INCLUDING ITEMS 25 & 26	
25	1	4212127	SEAL-CLUTCH PISTON OUTER - PART OF ITEM 24
26	1	230857	SEAL-CLUTCH PISTON INNER - PART OF ITEM 24
27	7	251560	CLUTCH INNER DISC INNER 2ND CLUTCH
28	7	224772	DISC-CLUTCH OUTER
29	1	245205	PLATE-CLUTCH DISC BACKING 2ND CLUTCH
30	1	215190	SNAP RING-BKG PLTE 6/18 O.D. EXP 1/8
31	1	4222695	RETAINER-SPRING 2ND CLUTCH
32	1	4222611	SPRING-HELICAL 2ND CLUTCH
33	1	4222696	RETAINER-SPRING 2ND CLUTCH
34	1	232076	SNAP RING SPRING-RETAINING 2ND CLUTCH
35	1	247487	SNAP RING-2ND HUB LOCATIN RING RET 247544
36	1	248702	RETAINER - 2ND HUB LOCATING RING
37A	AR	248759	RING-2ND HUB LOCATION .129/.127
37B	AR	248760	RING-2ND HUB LOCATION .125/.123
37C	AR	248761	RING-2ND HUB LOCATION .121/.119
37D	AR	248762	RING-2ND HUB LOCATION .117/.115
37E	AR	248763	RING-2ND HUB LOCATION .113/.111
38	1	243997	RING-CLUTCH HUB OIL BAFFLE
39			2ND CLUTH HUB - SEE SPECIAL PART SECTION
40	1	248774	BEARING-REV & 2ND SHAFT REAR K25 X 35 X 30

N.S.S. - Not Sold Separately
N.I. - Not Illustrated

Date : 30-AUG-16
Revised :
MODEL : 4508567

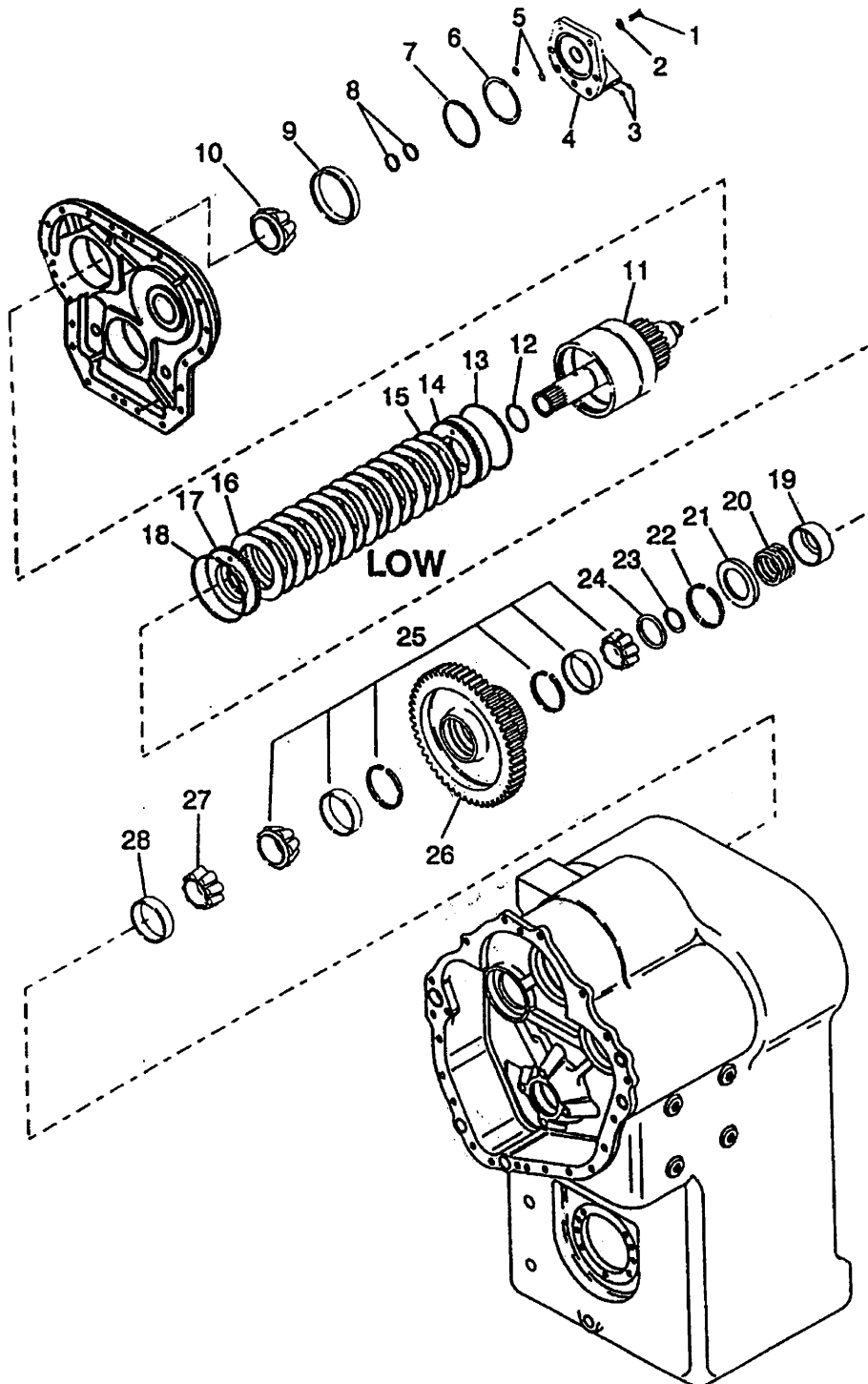
33000
GROUP-REV 2ND SHAFT

<u>Item</u>	<u>Qty</u>	<u>Part Number</u>	<u>Description</u>
41			REV CL. DRIVEN GEAR-SEE SPECIAL PART SECTION

N.S.S. - Not Sold Separately
N.I. - Not Illustrated



33000 Low Speed Shaft Group



GRP33081

Date : 30-AUG-16
Revised : N
MODEL : 269113

T33000
GROUP-LOW CLUTCH

<u>Item</u>	<u>Qty</u>	<u>Part Number</u>	<u>Description</u>
1	6	7CM1230	SCREW BEARING CAP
2	6	18EM1224	WASHER
3	2	239244	PLUG-PIPE (1/8-27) REAR BEARING CAP
4	1	248672	CAP-LOW SHAFT REAR BEARING
5	2	60K30016	SEAL-O RING REAR BRG CAP PRESSURE LUBE
6	AR	248775	SHIM-BEARING CAP .007
6A	AR	248776	SHIM-BEARING CAP .010
6B	AR	248777	SHIM-BEARING CAP .015
7	1	60K40508	SEAL-O RING REAR BEARING CAP TO COVER
8	2	4208098	PISTON-RING
9	1	248749	CUP-LOW SHAFT REAR BEARING HM212010
10	1	248748	CONE-LOW SHAFT REAR BEARING HM212049
11	1	250189	ASSY-LOW SPEED CLUTCH SHAFT DRUM & PLUG
12	1	230857	SEAL-CLUTCH PISONT INNER
13	1	245915	SEAL-CLUTCH PISTON OUTER
14	1	245928	PISTON-CLUTCH
15	8	247273	PLATE-CL DISC-OUTER CLUTCH
16	8	251704	DISC-INNER CLUTCH
17	1	247276	PLATE-CLUTCH DISC BACKING
18	1	243636	RING-BACKING PLATE RET
19	1	245655	RETAINER-WAVE SPRING
20	1	4209248	SPRING-WAVE
21	1	247297	RETAINER-WAVE SPRING, PISTON
22	1	232076	SNAP RING SPRING RETAINING
23	1	250317	RETAINER-SNAP RING LOW CLUTCH

N.S.S. - Not Sold Separately
N.I. - Not Illustrated

Date : 30-AUG-16
Revised : N
MODEL : 269113

T33000
GROUP-LOW CLUTCH

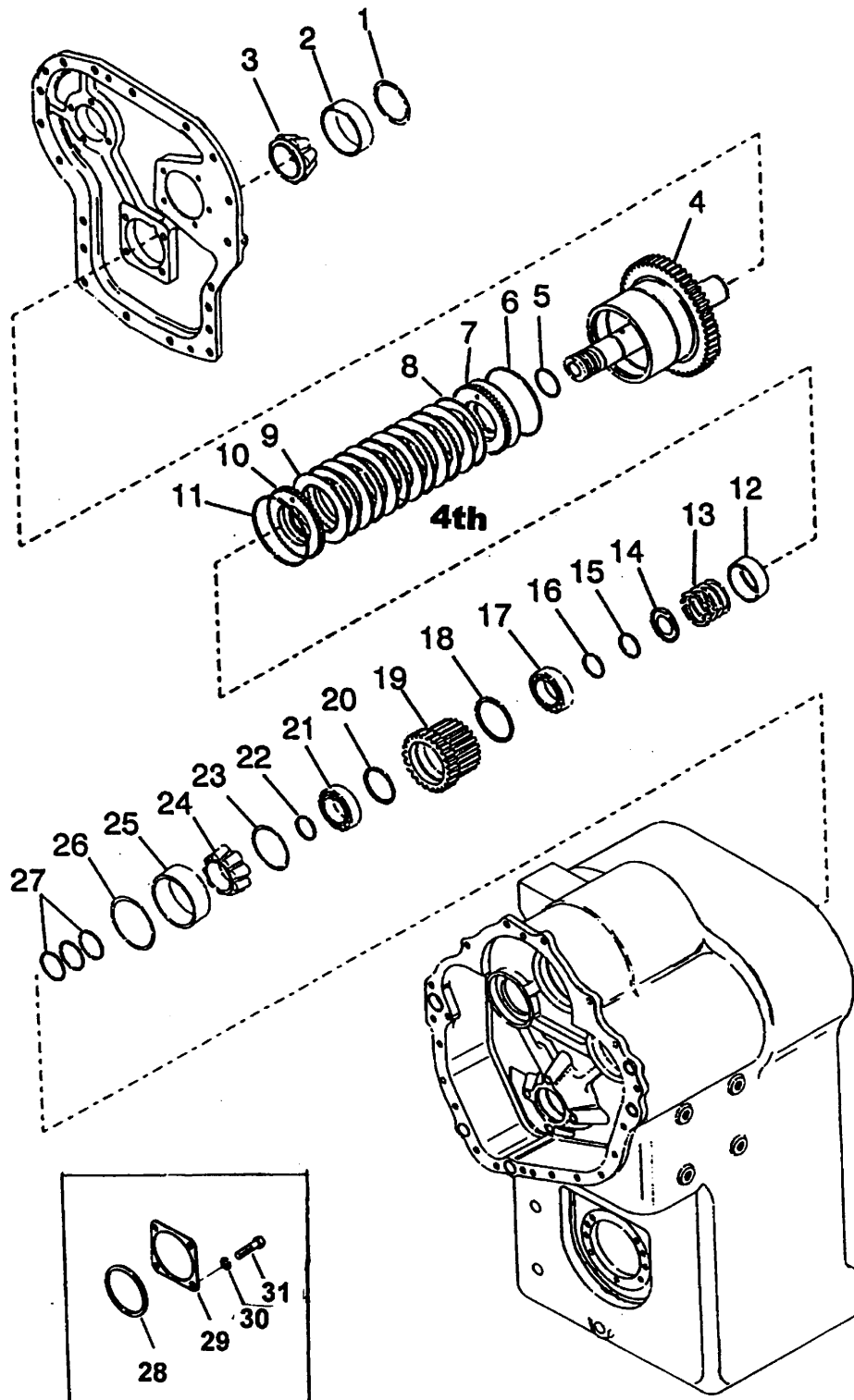
<u>Item</u>	<u>Qty</u>	<u>Part Number</u>	<u>Description</u>
25	1	231780	ASSEMBLY-LOW SPEED GEAR BEARING
26	1	250792	GEAR LOW 80T
27	1	248743	CONE-LOW SHAFT FRONT BEARING HM807044
28	1	248744	CUP-LOW SHAFT FRONT BEARING HM807015-B

N.S.S. - Not Sold Separately
N.I. - Not Illustrated



SPICER OFF-HIGHWAY PRODUCTS DIVISION

33000 Idler Shaft & Fourth Clutch Group Long Drop



GRP33061

Date : 30-AUG-16
Revised : D
MODEL : 925088

T33000
GROUP-IDLER 4TH SHAFT

<u>Item</u>	<u>Qty</u>	<u>Part Number</u>	<u>Description</u>
1	AR	248775	SHIM-IDLER SHAFT .007
1A	AR	248776	SHIM-IDLER SHAFT .010
1B	AR	248777	SHIM-IDLER SHAFT .015
2	1	248749	CUP-REAR BEARING HM212010
3	1	248748	CONE-REAR BEARING HM212049
4	1	250964	ASSY-IDLER SHAFT HUB, DRUM AND PLUG
5	1	230857	SEAL-CLUTCH PISTON INNER - PART OF ITEM 7
6	1	4212127	SEAL-CLUTCH PISTON OUTER - PART OF ITEM 7
7	1	4213593	ASSY-CLUTCH PISTON ALU-INCL.ITEMS 5 & 6
8	6	224772	DISC-CLUTCH OUTER
9	6	251560	CLUTCH INNDER DISC
10	1	245205	PLATE-CLUTCH DISC BACKING
11	1	215190	SNAP RING-BACKING PLAT E6 1/8 O.D. EXP X 1/8
12	1	245655	RETAINER-WAVE SPRING 4TH CL
13	1	4209248	SPRING-WAVE
14	1	247297	REATAINER-WAVE SPRING, PISTON RETURN 4TH CL
15	1	230888	SNAP RING-4TH GEAR BEARING/RING-SPRING-RETAIN
16	1	230888	SNAP RING-4TH GEAR BEARING/RING-SPRING-RETAIN
17	1	231624	BEARING-4TH GEAR 1010
18			Not Used On This Model
19	1	248649	GEAR-3RD CLUCH 38T
20	1	232405	SPACER-4TH GEAR BEARING
21	1	231624	BEARING-4TH GEAR 1010
22	1	230888	SNAP RING-4TH GEAR BEARING/RING-SPRING-RETAIN
23	1	248750	WASHER-FRONT BEARING THRUST ID

N.S.S. - Not Sold Separately
N.I. - Not Illustrated

Date : 30-AUG-16
Revised : D
MODEL : 925088

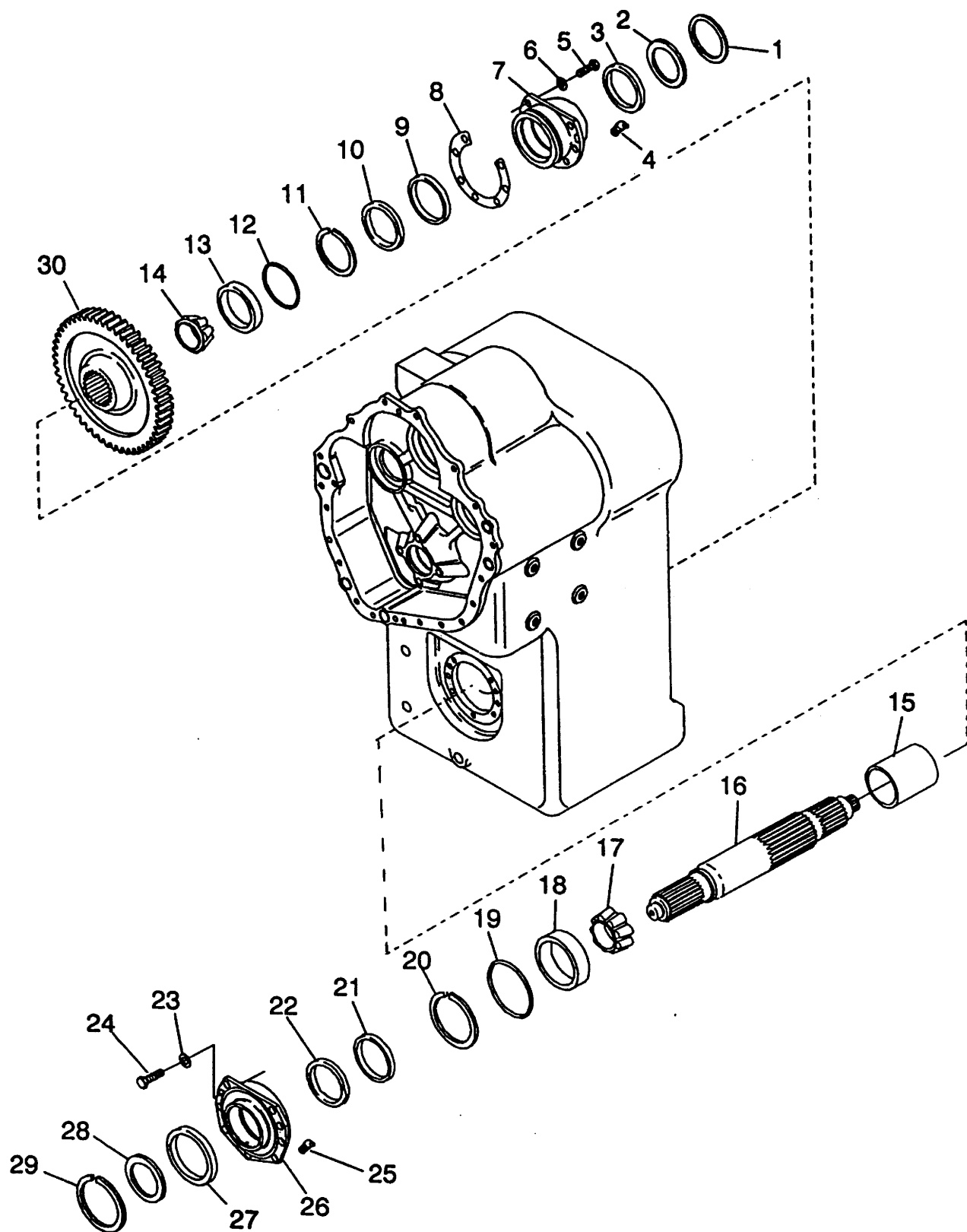
T33000
GROUP-IDLER 4TH SHAFT

<u>Item</u>	<u>Qty</u>	<u>Part Number</u>	<u>Description</u>	
24	1	248739	CONE-FRONT BEARING	JM205149
25	1	248740	CUP-FRONT BEARING	JM205110
26	1	248779	SPACER-FRONT BEARING	OD
27	3	250219	RING-IDLER-4TH CLUTCH SHAFT PISTON	MELDIN
28	1	60K40508	O-RING	
29	1	250899	CAP-REAR BRG	
30	4	18EM1426	WASHER	
31	4	7CM1435	CAP SCREW	

N.S.S. - Not Sold Separately
N.I. - Not Illustrated



GROUP-OUTPUT SHAFT



GRP33071

Date : 30-AUG-16
Revised : H
MODEL : 268998

32000
GRP-OUTPUT SHAFT

<u>Item</u>	<u>Qty</u>	<u>Part Number</u>	<u>Description</u>
1			Not Used On This Model
2	1	244083	OIL SEAL
3	1	223859	SNAP RING EXPANDING TYPE
4			Not Used On This Model
5	7	7CM1235	CAPSCREW
6	7	18EM1224	WASHER-PLAIN
7	1	250824	CAP-OUTPUT REAR BEARING
8	AR	250123	SHIM-REAR BRG CAP
8A	AR	250124	SHIM-REAR BRG CAP
8B	AR	250125	SHIM-REAR BRG CAP
8C	AR	250126	SHIM-REAR BRG CAP
9			Not Used On This Model
10			Not Used On This Model
11			Not Used On This Model
12	1	60K40608	O RING
13	1	243259	TAPER ROLLER BEARING CUP
14	1	243257	TAPER ROLLER BEARING CONE
15	1	239980	OUTPUT SHAFT SPACER
16	1	248698	SHAFT-OUTPUT
17	1	243257	TAPER ROLLER BEARING CONE
18	1	243259	TAPER ROLLER BEARING CUP
19	1	60K40608	O RING
20	1	223859	SNAP RING EXPANDING TYPE
21	1	244083	OIL SEAL
22			Not Used On This Model

N.S.S. - Not Sold Separately
N.I. - Not Illustrated

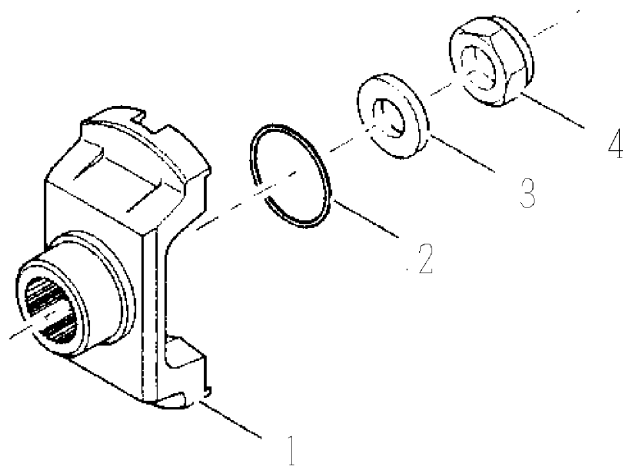
Date : 30-AUG-16
Revised : H
MODEL : 268998

32000
GRP-OUTPUT SHAFT

<u>Item</u>	<u>Qty</u>	<u>Part Number</u>	<u>Description</u>
23	9	18EM1019	WASHER
24	9	7CM1035H	CAPSCREW
25			Not Used On This Model
26	1	250823	CAP-OUTPUT FRONT BEARING
27			Not Used On This Model
28			Not Used On This Model
29			Not Used On This Model
30			OUTPUT SHAFT GEAR - SEE SPECIAL PART SECTION

N.S.S. - Not Sold Separately
N.I. - Not Illustrated

OUTPUT FLANGE GROUP



Date : 30-AUG-16
Revised :
MODEL : 4505358

33000
GROUP-OUTPUT FLANGE 155KV70

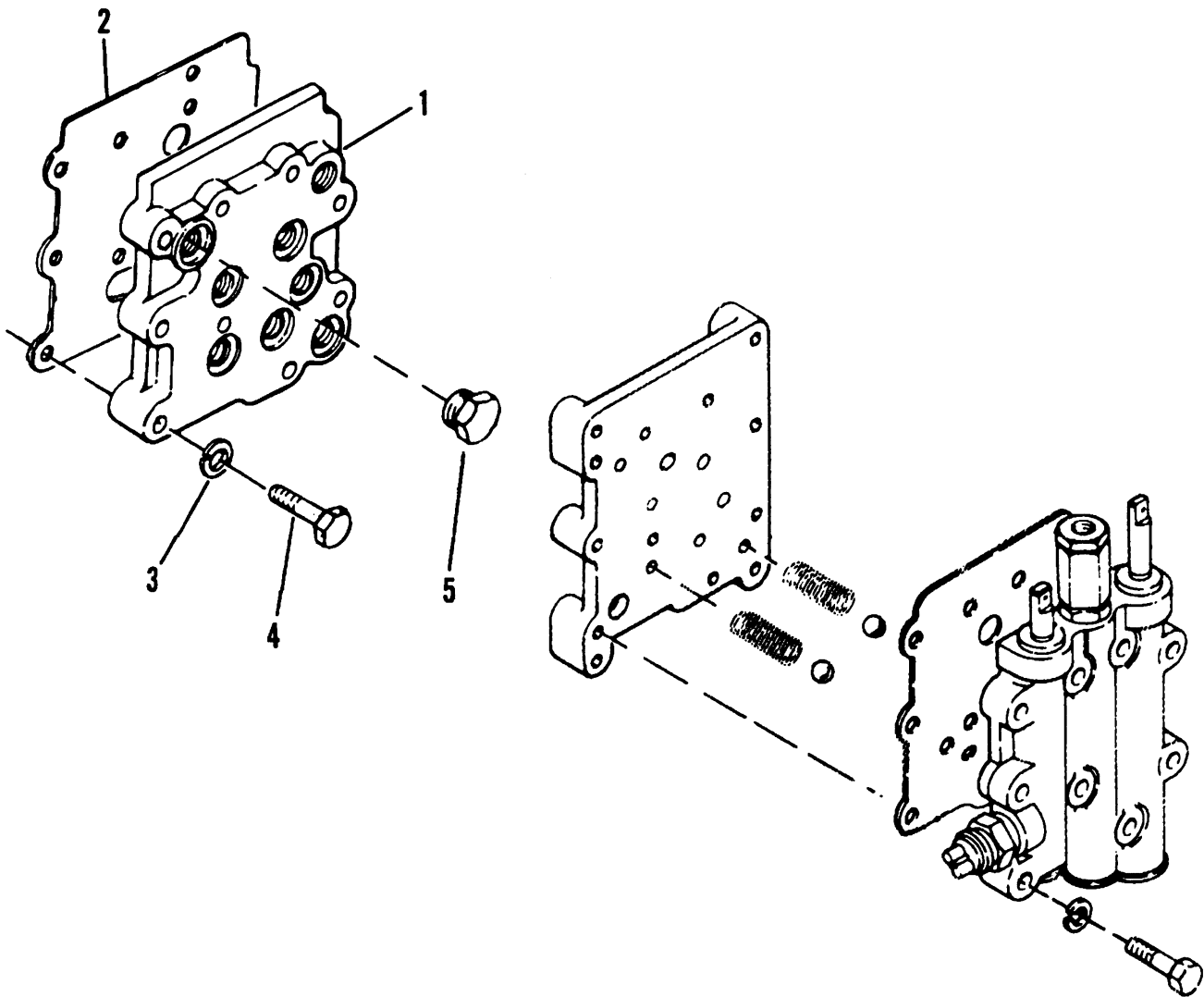
<u>Item</u>	<u>Qty</u>	<u>Part Number</u>	<u>Description</u>
1	1	251723	FLANGE-OUTPUT 155KV(17T)
2	1	25K60128	O-RING
3	1	231916	SPACER
4	1	248857	LOCK NUT

N.S.S. - Not Sold Separately
N.I. - Not Illustrated



SPICER OFF-HIGHWAY PRODUCTS DIVISION

GROUP-REMOTE VALVE ADAPTOR PLATE



GRPSEV247

Date : 30-AUG-16
Revised : A
MODEL : 4504744

33000

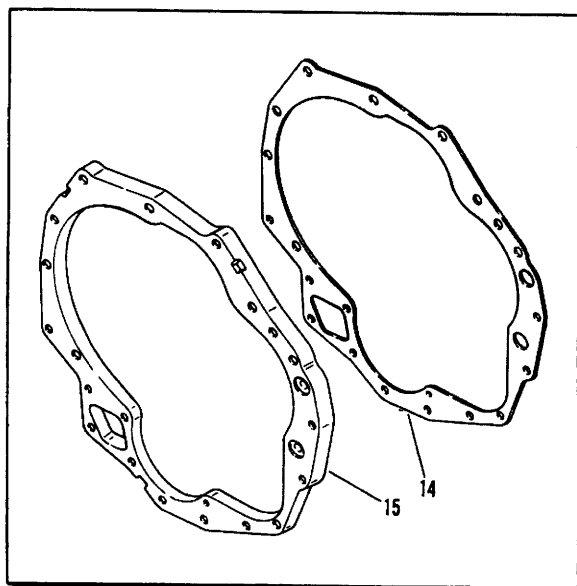
GROUP-ADAPTOR PLATE

<u>Item</u>	<u>Qty</u>	<u>Part Number</u>	<u>Description</u>	
1	1	246261	VALVE ADAPTOR PLATE	
2	1	248023	GASKET-CONTROL VALVE	
3	9	18EM816	WASHER-PLAIN	
4	9	7CM880	CAPSCREW	
5	1	24K6	FITTING-PLUG	
	1	16F8	PIPE PLUG	N.I.
	6	24K5	FITTING-PLUG	N.I.
	2	16F1	PIPE PLUG	N.I.

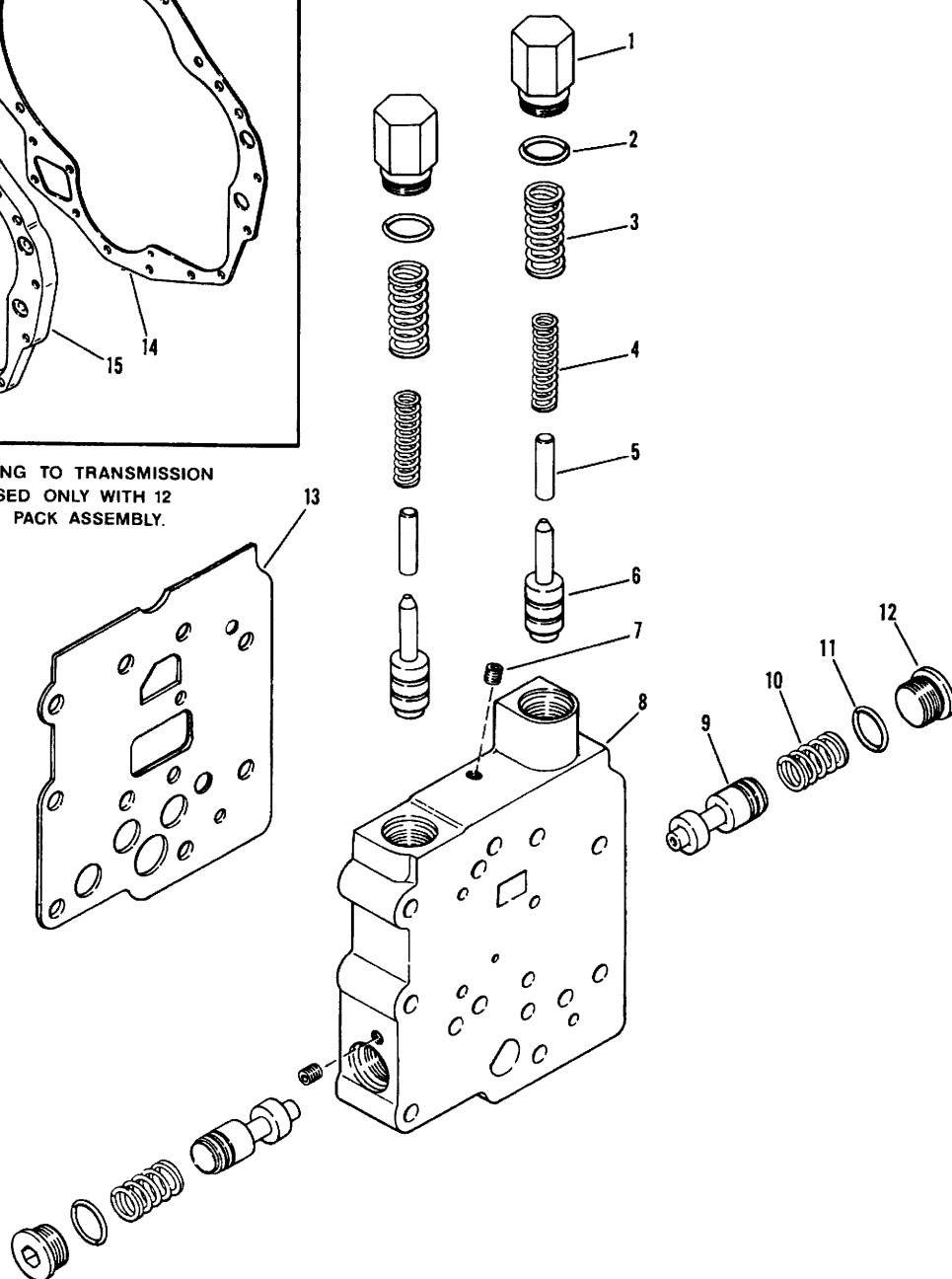
N.S.S. - Not Sold Separately
N.I. - Not Illustrated



ASSEMBLY-MODULATED VALVE



CONVERTER HOUSING TO TRANSMISSION
CASE SPACER USED ONLY WITH 12
PLATE CLUTCH PACK ASSEMBLY.



GRPSEV443

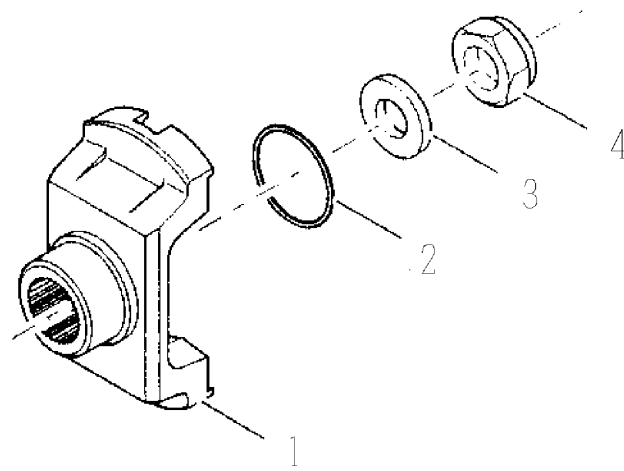
Date : 30-AUG-16
Revised :
MODEL : 237092

28000
ASSY-MODULATOR VALVE

<u>Item</u>	<u>Qty</u>	<u>Part Number</u>	<u>Description</u>
1	2	237083	PLUG
2	2	91F7	O RING
3	2	241662	SPRING OUTER
4	2	241667	SPRING-ACCUMULATOR
5	2	237084	PIN
6	2	N.S.S.	SPOOL-ACCUMULATOR
		Part of item 8	
7	2	239244	PLUG
8	1	N.S.S.	BODY-VALVE
		Including items 1 thru 12	
9	2	N.S.S.	ASSEMBLY-REGULATOR SPOOL
		Part of item 8	
10	2	241670	SPRING-REGULATOR
11	2	91F7	O RING - PART OF ITEM 12
12	2	47K7	FITTING-PLUG, O RING SEAL-INCLUDE ITEM 11
13			GASKET-MOD VALVE TO PLATE-SEE FRONT PAGE1
14			Not Used On This Model
15			Not Used On This Model

N.S.S. - Not Sold Separately
N.I. - Not Illustrated

INPUT FLANGE GROUP



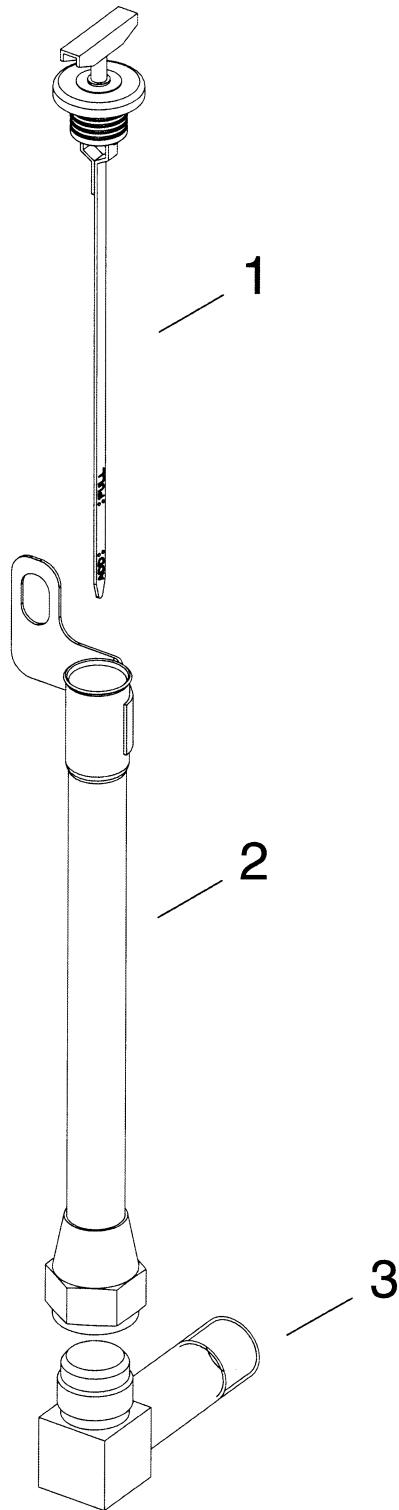
Date : 30-AUG-16
Revised : B
MODEL : 4505357

33000
GROUP-INPUT FLANGE 155KV70

<u>Item</u>	<u>Qty</u>	<u>Part Number</u>	<u>Description</u>
1	1	4214143	FLANGE-155KV70-14T
2	1	60K60116	O-RING
3	1	222179	NUT-WASHER
4	1	249817	LOCKNUT-NYLON INSERT M 30 X 1.5

N.S.S. - Not Sold Separately
N.I. - Not Illustrated

33000
GROUP-DIPSTICK



Date : 30-AUG-16
Revised :
MODEL : 4504626

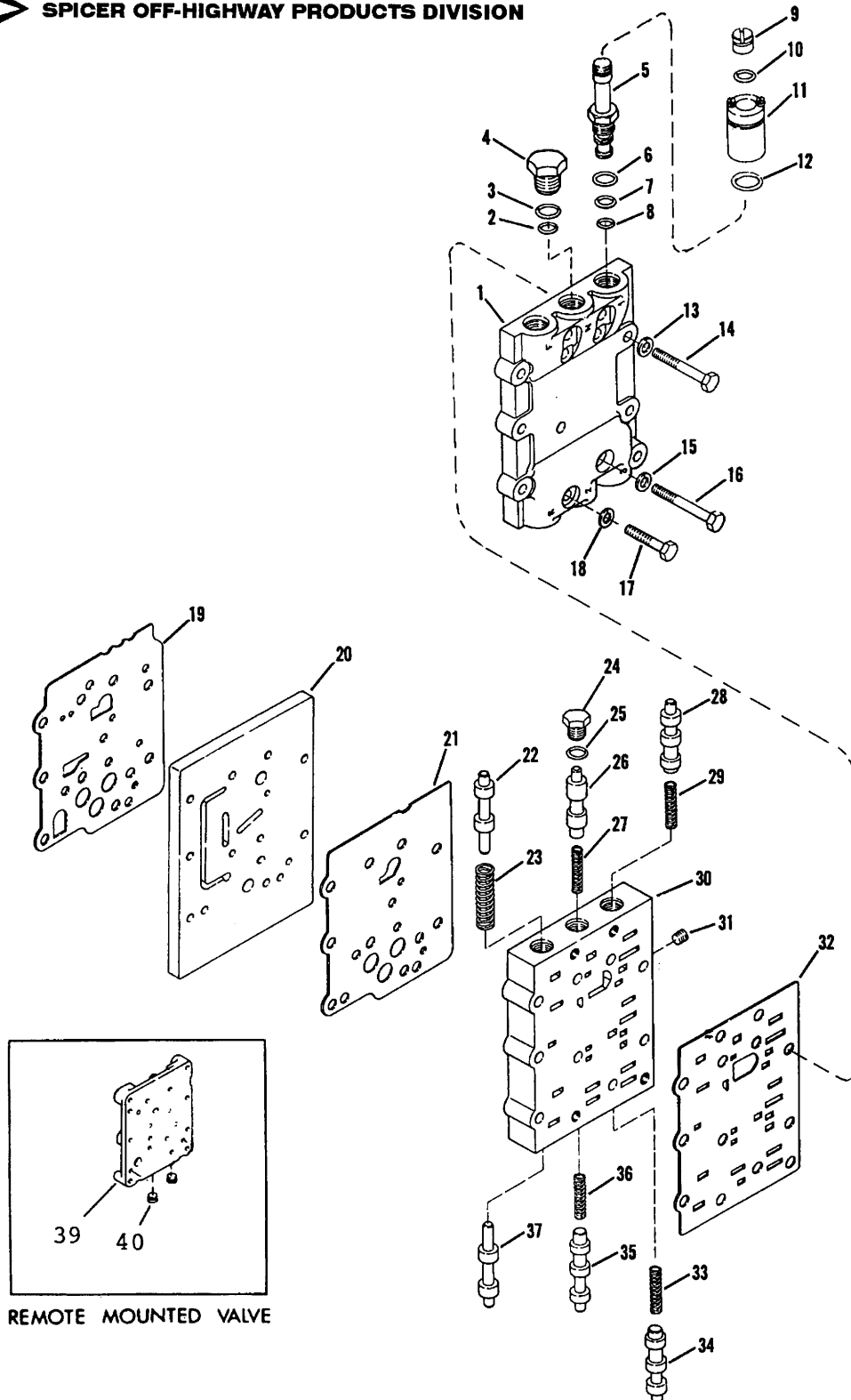
33000
GROUP- EXTERNAL DIPSTICK

<u>Item</u>	<u>Qty</u>	<u>Part Number</u>	<u>Description</u>
1	1	242616	DIPSTICK
2	1	4211950	ASSY-DIPSTICK TUBE
3	1	4212162	ELBOW - 90 DEGREES NPTF MALE

N.S.S. - Not Sold Separately
N.I. - Not Illustrated



SPICER OFF-HIGHWAY PRODUCTS DIVISION



SPICER OFF-HIGHWAY PRODUCTS, DANA CORPORATION
1293 GLENWAY DRIVE STATESVILLE, NC 28625 TEL: (704) 878-5608

GRPSEV244
WWW.DANA.COM

Date : 30-AUG-16
Revised :
MODEL : 251339

32000

ASSY-REMOTE ELECTRIC CONTROL VALVE

<u>Item</u>	<u>Qty</u>	<u>Part Number</u>	<u>Description</u>
1	1	234790	HOUSING-SOLENOID CONTROL
2	1	25K20016	O RING
3	1	91F6	O RING
4	1	234776	SOLENOID PLUG
5	5	246284	CARTRIDGE SPOOL--INCL.ITEMS 6,7 & 8 Order 247749 assy-spool solenoid to service complete solenoid (includes items 5 thru 12)
6	5	76K8	O RING - PART OF ITEM 5
7	5	76K14	O RING - PART OF ITEM 5
8	5	76K13	O RING - PART OF ITEM 5
9	5	249152	NUT-SOLENOID
10	5	76K20	O RING
11	5	246291	SOLENOID-COIL
12	5	76K20	O RING
13	5	4E6	LOCKWASHER
14	5	1C644	CAPSCREW
15	4	4E6	LOCKWASHER
16	4	1C648	CAPSCREW
17	4	1C628	CAPSCREW
18	4	4E6	LOCKWASHER
19			Not Used On This Model
20			Not Used On This Model
21	1	248029	GASKET-CONTROL VALVE
22	1	234784	FWD. AND REV. SPOOL
23	1	234785	SPRING
24	6	234793	PLUG

N.S.S. - Not Sold Separately
N.I. - Not Illustrated

Date : 30-AUG-16
Revised :
MODEL : 251339

32000

ASSY-REMOTE ELECTRIC CONTROL VALVE

<u>Item</u>	<u>Qty</u>	<u>Part Number</u>	<u>Description</u>
25	6	91F6	O RING
26	1	234787	SPOOL-RANGE
27			Not Used On This Model
28	1	234788	SPEED SELECTOR SPOOL
29	1	234789	SPRING-SPOOL
30	1	241131	ASSY-CONTROL VALVE include items 22 thru 26,28,29,31,33 thru 37
31	1	16F8	PLUG
32	1	249003	GASKET-SOLENOID VALVE
33	1	234789	SPRING-SPOOL
34	1	234788	SPEED SELECTOR SPOOL
35	1	234786	SPOOL-2ND SPEED
36	1	234789	SPRING-SPOOL
37	1	234784	FWD. AND REV. SPOOL
39	1	236519	PLATE-REMOTE CONTROL
40	2	239244	PLUG

N.S.S. - Not Sold Separately
N.I. - Not Illustrated

Date : 23-AUG-16
Revised : A
MODEL : 8100422

33000
KIT-33000 SEALING

<u>Item</u>	<u>Qty</u>	<u>Part Number</u>	<u>Description</u>
10	1	456294	SEAL-OIL
20	1	248023	GASKET-CONTROL VALVE
30	1	25K20016	O RING
40	1	25K60116	O RING
50	1	25K60128	O RING
60	6	60K30012	O RING
70	2	60K30016	O RING
80	1	60K30018	O RING
90	3	60K30020	O RING
100	1	60K30022	O RING
110	5	60K40026	O RING
120	1	60K40100	O RING
130	1	60K40116	O RING
140	1	60K40504	O RING
150	1	60K40508	O RING
160	3	60K40608	O RING
170	1	60K40700	O RING
180	3	60K60116	O-RING
190	1	76K12	O RING
200	2	76K20	O RING
210	1	91F6	O RING
220	2	91F7	O RING
230	3	60K20020	O RING
240	1	218776	O RING
250	5	8100384	RING-PISTON OUTER

N.S.S. - Not Sold Separately
N.I. - Not Illustrated

Date : 23-AUG-16
Revised : A
MODEL : 8100422

33000
KIT-33000 SEALING

<u>Item</u>	<u>Qty</u>	<u>Part Number</u>	<u>Description</u>
255	5	4212127	SEAL-CLUTCH PISTON OUTER
257		-----USE 8100384 OR 4212127	DEPENDING ON VERSION
258		-----OF PISTON	
260	1	229804	SEALING RING
270	4	230857	LIP SEAL INVERTED TYPE
280	1	230954	OIL SEAL
290	1	243712	GASKET-SCREEN ASSEMBLY
300	2	244083	OIL SEAL
310	1	238339	P. EV. MOD. HOSE ASSY
320	1	245915	SEAL-CLUTCH PISTON OUTER
330	1	248022	GASKET-MODULATOR VALVE
340	1	245131	GASKET
350	1	248029	GASKET-CONTROL VALVE
360	1	248737	GASKET-REAR COVER
370	2	248768	SEAL-CLUTCH PISTON
380	1	231199	GASKET-PUMP TO FILTER
390	1	249003	GASKET-SOLENOID VALVE
400	1	249731	GASKET-CONV TRANS HOUSING
410	2	4208098	PISTON-RING
420	6	4212062	RING-PISTON CAST IRON
430	1	249889	GASKET
440	1	249914	GASKET-VALVE BODY TO PUMP
450	4	250219	RING-PISTON
460	1	230839	OIL SEAL

N.S.S. - Not Sold Separately
N.I. - Not Illustrated



Part Stocking Recommendation

The table below is a minimum spare parts inventory recommendation designated by letter code in each Service Parts List. Each letter code indicates a percentage for determining stock quantities to support the field population. Any quantity less than 1 or partial quantities need not be stocked.

Letter Code	Percentage	Example
A	15%	Part quantity = 10 per unit Field Population = 240 units Recommended stock = 240 units x 10 per unit x .15 = 360 parts
B	10%	Part quantity = 4 per unit Field Population = 66 units Recommended stock = 66 units x 4 per unit x .10 = 26.4 or 26 parts
C	6%	Part quantity = 2 per unit Field Population = 203 units Recommended stock = 203 units x 2 per unit x .06 = 24.4 or 24 parts
D	4%	Part quantity = AR* Field Population = 42 units Recommended stock = 42 units x 3 per unit x .04 = 5.04 or 5 parts
E	2%	Part quantity = 1 per unit Field Population = 75 units Recommended stock = 75 units x 1 per unit x .02 = 1.5 or 1 part
*Part quantities denoted by "AR" (as required) should be ordered by a quantity of 3 per unit.		

© Copyright 2016 Dana Holding Corporation
All content is subject to copyright by Dana and may not
be reproduced in whole or in part by any means,
electronic or otherwise, without prior written approval.
THIS INFORMATION IS NOT INTENDED FOR SALE OR
RESALE, AND THIS NOTICE MUST REMAIN ON ALL
COPIES.

For product inquiries or support,
visit www.dana.com or call 419-887-6445
For other service publications,
visit www.SpicerParts.com/literature.asp
For online service parts ordering,
visit www.SpicerParts.com/order.asp



SPICER[®]
Off-Highway Products